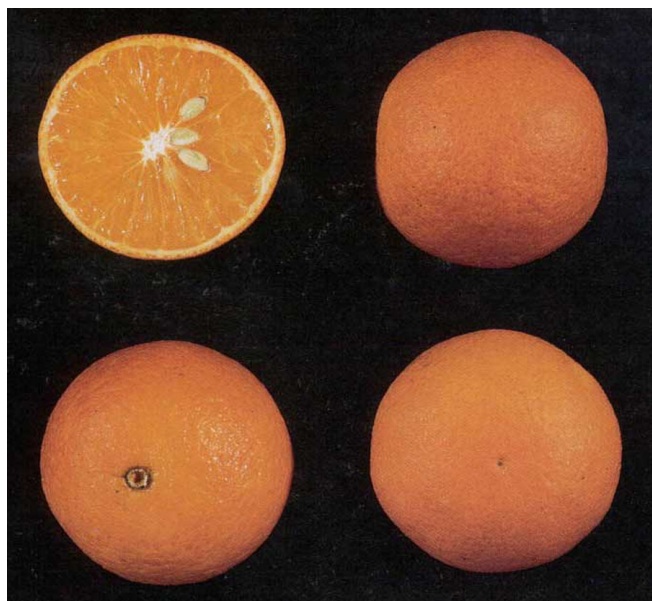


## Page Citrus Hybrid<sup>1</sup>

Larry K. Jackson and Stephen H. Futch<sup>2</sup>

While the Page (Figure 1) is considered an orange by some, it is actually a hybrid of Minneola tangelo and Clementine mandarin. Since Minneola is a grapefruit-tangerine hybrid, Page is actually 3/4 tangerine and 1/4 grapefruit. The cultivar was released in 1963 and came from a cross made in 1942 by Gardner and Bellows of the United States Department of Agriculture facility in Orlando.



**Figure 1.** The Page grapefruit-tangerine hybrid

Page is an early-ripening, high quality cultivar that showed considerable promise in early trials but has not fared well in commercial cultivation due to several problems that will be brought out later.

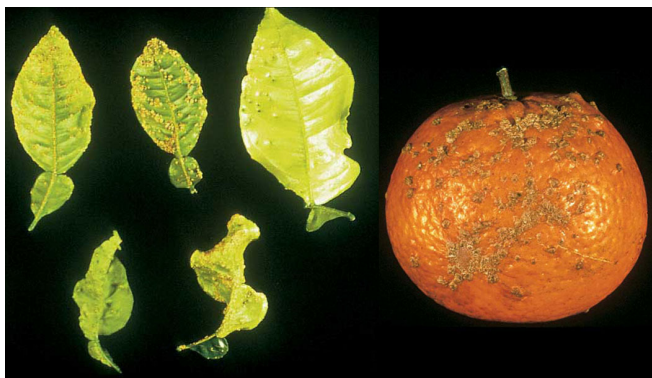
### Fruit Characteristics

Fruit size of Page is often a problem. Trees tend to produce fruit of unacceptably small size and the reasons and solutions to the problem remain undiscovered. Marketable fruit are medium sized, about 2 - 2 1/2 inches in diameter. The rind is medium-thin, leathery, but easy to peel with good color. The shape is round to slightly oblong as is typical of a sweet orange. Seed numbers vary from very few in solid plantings with up to as many as 25 in mixed plantings where cross-pollination readily occurs.

Page matures early in most years (October) and holds on the tree very well with some fruit harvested as late as February. The fruit (and the foliage) is susceptible to scab fungus disease (Figure 2). For more information on this disease see Fact Sheet PP-153, Citrus Scab.

1. This document is HS179, one of a series of the Horticultural Sciences Department, Florida Cooperative Extension Service, Institute of Food and Agricultural Sciences, University of Florida. Original publication date September 2003. Revised March 2003. Reviewed March 2009. Visit the EDIS Web site at <http://edis.ifas.ufl.edu>.
2. Larry K. Jackson, professor emeritus, extension horticulturist, CREC-Lake Alfred; Stephen H. Futch, multi-county extension agent-citrus, CREC-Lake Alfred, Cooperative Extension Service, Institute of Food and Agricultural Sciences, University of Florida, Gainesville FL 32611.

The Institute of Food and Agricultural Sciences (IFAS) is an Equal Opportunity Institution authorized to provide research, educational information and other services only to individuals and institutions that function with non-discrimination with respect to race, creed, color, religion, age, disability, sex, sexual orientation, marital status, national origin, political opinions or affiliations. U.S. Department of Agriculture, Cooperative Extension Service, University of Florida, IFAS, Florida A. & M. University Cooperative Extension Program, and Boards of County Commissioners Cooperating. Millie Ferrer, Interim Dean



**Figure 2.** Scab fungus

## Tree Characteristics

Page trees are moderately vigorous with an upright growth habit. Branches are nearly thornless and may assume a drooping appearance under a heavy crop load. The tree is relatively cold hardy and should be interplanted with other pollenizer varieties to insure good fruit set and fruit size. Trees appear quite productive but even under the best conditions small fruit size can be a problem.

Since Page has not been widely grown, not a great deal is known about rootstock selection. However, one would likely want to select a rootstock such as Carrizo which could promote fruit size and quality where possible.

## Cultivation

Page should behave as any other citrus tree in commercial cultivation. Some production problems have limited commercial production but the variety is an excellent tree for the home gardener due to the high quality of the fruit and long harvest periods.

1. Page is plagued by small fruit size, often setting large crops of very small fruit even under ideal conditions.
2. Page should receive optimum care and be interplanted with pollenizer varieties such as Lee, Orlando or Temple to minimize fruit size problems.
3. Susceptibility to scab fungus diseases will necessitate a rigid spray schedule, especially during spring months.

## More Information

1. Hearn, C.J. and P.C. Reece. 1967. "Pollination Needs of Page, Lee, Nova and Robinson Citrus Hybrids." *Citrus Industry Magazine*. 48(4):19,23.
2. Hearn, C.J., P.C. Reece and R. Fenton. 1968. "Effects of Pollen Source on Fruit Characteristics and Set of Four Citrus Hybrids." *Proc. Fla. State Hort. Soc.* 81:94-97.
3. Hearn, C. J. and D. J. Hutchison. 1977. "The Performance of Robinson and Page Citrus Hybrids on 10 Rootstocks." *Proc. Fla. State Hort. Soc.* 90:44-47.
4. Jackson, Larry K. and Frederick S. Davies. 1999. *Citrus Growing in Florida*, Fourth Edition. University Press of Florida, Gainesville, FL. p. 98.
5. Saunt, James. 2000. *Citrus Varieties of the World*. Sinclair International Limited, Norwich, England. p. 84.
6. Tucker, D.P.H., S.H. Futch, F.G. Gmitter, and M.C. Kesinger. 1998. *Florida Citrus Varieties*. SP-102. University of Florida, Institute of Food and Agricultural Sciences, Cooperative Extension Service. p. 41.