

# White Garden Snail, *Theba pisana* (Müller) (Gastropoda: Helicidae)<sup>1</sup>

Jane E. Deisler, Lionel A. Stange, and Thomas R. Fasulo<sup>2</sup>

## Introduction

The white garden snail, *Theba pisana* (Müller), is the worst potential agricultural pest of the helioid snails introduced to North America (Mead 1971). It is the most frequently intercepted foreign land snail (Hanna 1966, Mead 1971), generally arriving in shipments from the Mediterranean countries. *Theba pisana* shows a strong proclivity for climbing up and into freight for aestivation and is difficult to detect. This snail can survive long and arduous journeys because of its ability to form a wall of dried mucus, called an epiphragm, in the aperture of its shell which reduces water loss during dormancy.



Figure 1. **The white garden snail, *Theba pisana* (Müller).**  
Credits: Esculapio

*Theba pisana* is capable of explosive reproductive rates where it has been introduced, and can be found in densities of up to 3000 snails per tree (Mead 1971) after periods of less than five years (Chace 1915, Orcutt 1919). Once established, *T. pisana* causes severe defoliation of a number of plants, including citrus and ornamental plantings (Orcutt 1919, Pilsbry 1939, Abbott 1950, Dekle 1962, Hanna 1966, Mead 1971). *Theba pisana* was previously known as *Helix pasana* (Müller).

## Distribution

*Theba pisana* is native in the Mediterranean countries of Europe, Africa and the Mid-East (Pilsbry 1939, Burch 1960). The type locality is Italy. Its habitat in Europe is near the coasts of Belgium, southwestern England and south Wales, east and south Ireland, western France, Netherlands, Portugal, Spain (where it is occasionally found in the interior) (Kerney and Cameron 1979, Schultes 2011). It has been introduced into the central Atlantic islands, Africa (Somaliland, South Africa), and southeastern Australia (including Tasmania) (Schultes 2011).

This snail was first noticed in North America in La Jolla, San Diego County, California, in 1914 (Chace 1915, Basinger 1923). It is established only in San Diego County, but has been reported both Los Angeles and Orange counties

1. This document is EENY-197 (IN354) (originally published as DPI Entomology Circular 2), one of a series of Featured Creatures from the Entomology and Nematology Department, Florida Cooperative Extension Service, Institute of Food and Agricultural Sciences, University of Florida. Published: March 2001. Revised: August 2011. This document is also available on Featured Creatures Web site at <http://entomology.ifas.ufl.edu/creatures>. Please visit the EDIS Web site at <http://edis.ifas.ufl.edu>.
2. Jane E. Deisler, museum curator, Corpus Christi Museum, Corpus Christi, TX; Lionel A. Stange, Florida Department of Agriculture and Consumer Services, Division of Plant Industry; and Thomas R. Fasulo, Department of Entomology and Nematology, Institute of Food and Agricultural Sciences, University of Florida, Gainesville, FL 32611.

(Flint 2011). Mead (1971) reported an infestation in Los Angeles County in 1966 which was declared eradicated in 1972 (William A. Edwards, personal communication). The snails were found and identified in August 1985, in San Diego, California, at several localities in about a 10 square mile area. Hanna (1966) stated that *T. pisana* has been introduced into several eastern localities in the United States. However, there are no published records for North American populations outside of California. *Theba pisana* is also present in Bermuda, but has never been recorded from Florida.

## Identification

The shell is subglobose with a moderately depressed spire. The adult shell has 5.5–6 slightly convex whorls with shallow sutures. It is of medium size, ranging from 12 to 15 mm (rarely to 25) in diameter and 9 to 12 mm (rarely to 20) in height, and is opaque and moderately solid. The umbilicus is narrow and partially to entirely covered by an expansion of the columella. The aperture of the shell is rounded and lunate and only slightly oblique. The lip of the aperture is sharp and unreflected, but some specimens show a thickening inside the lip. The juvenile shell has a sharp keel at the periphery, but in the adult shell the periphery is only slightly shouldered. The surface of the shell is not glossy, but is marked with many fine vertical striae. The background color of the shell is nearly always ivory white (rarely pink), and there are often a variable number of narrow dark-brown spiral bands present. These bands may be solid, made up of dots and dashes, or absent. This difference in coloration does not have any systematic significance because it is apparently a polymorphic trait subject to differential selection pressures and it correlates with microhabitat (Johnson 1980). The first 1 1/2 whorls are generally dark in color, ranging from tan to dark brown, and give the appearance of a dot on the apex of the shell.

## Biology

During dry weather, most slugs and snails aestivate hidden under logs or stones or buried in the earth. However, *T. pisana* aestivates in the open on trees, fences, and other vertical surfaces. Pilsbry (1939) reported that *T. pisana* mates after rains during early November in California. Like all helicid snails, *Theba pisana* is a cross-fertilizing hermaphrodite. The eggs are deposited several inches in the ground a few weeks after mating. Hatching occurs after a minimum of 20 days, but may occur later during dry weather. In the active season, this snail partially defoliates a variety of shrubs and trees, including citrus. The great density of the populations in California (up to 3000 snails

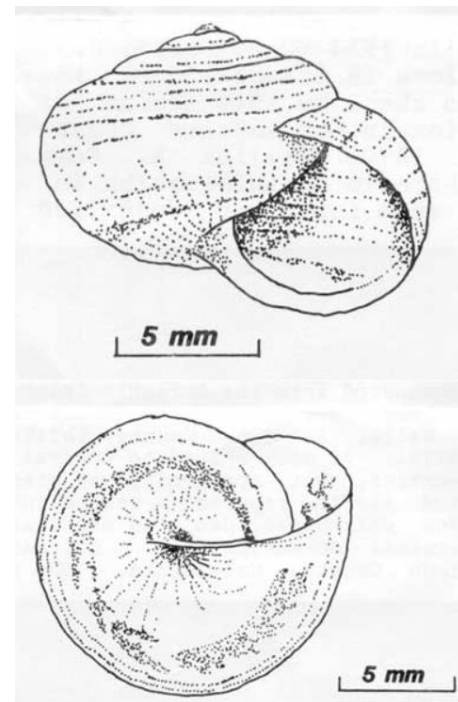


Figure 2. **Front (top) and basal (bottom) views of the white garden snail, *Theba pisana* (Müller).**

Credits: **Division of Plant Industry**



Figure 3. **Brown banded color form of the white garden snail, *Theba pisana* (Müller).**

Credits: **Division of Plant Industry**

per tree) and the rapid rate of reproduction are primary factors in making this snail a major pest (Mead 1971).

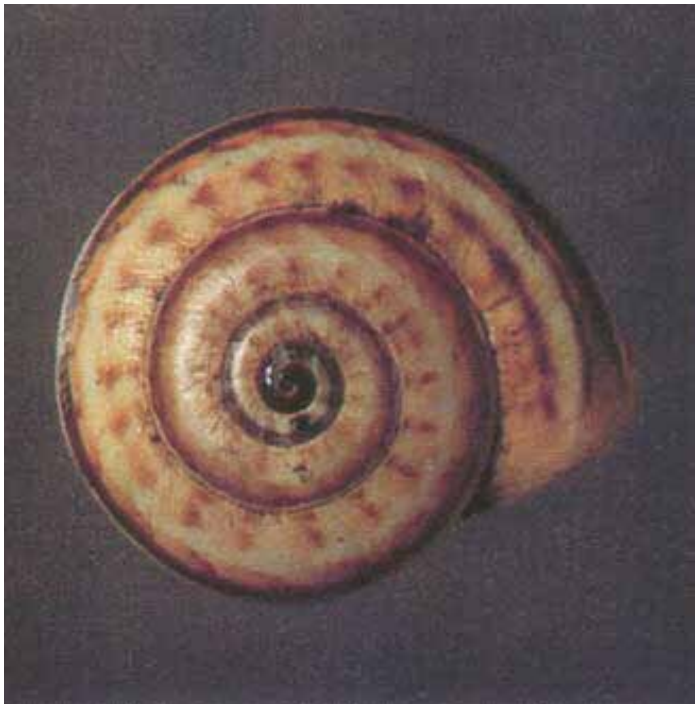


Figure 4. **Dots and dashes color form of the white garden snail, *Theba pisana* (Müller).**

Credits: Division of Plant Industry

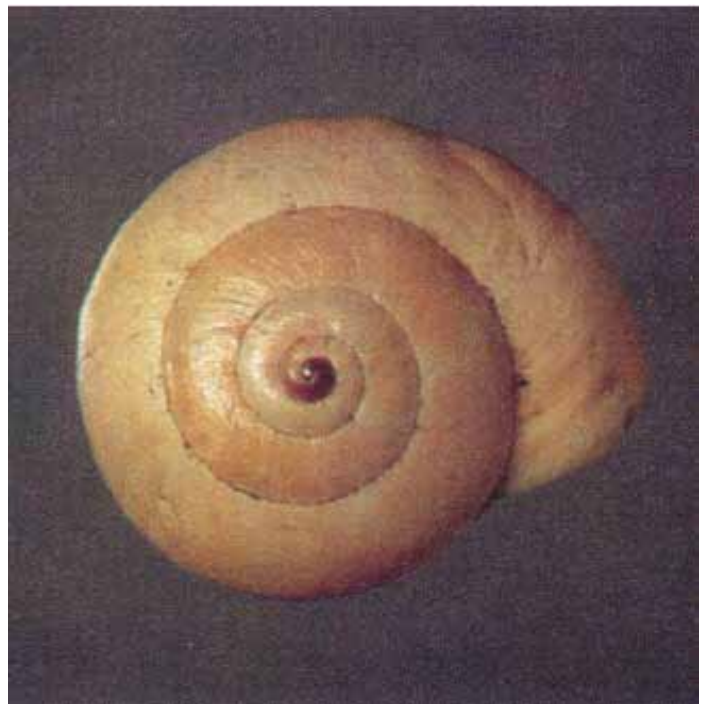


Figure 6. **Non-banded color form of the white garden snail, *Theba pisana* (Müller).**

Credits: Division of Plant Industry



Figure 5. **A lighter dots and dashes color form of the white garden snail, *Theba pisana* (Müller).**

Credits: Paul M. Choate, University of Florida

## Survey and Detection

Searches should be directed to plants, fences, and other vertical surfaces in nature, especially in sandy areas. Crates shipped from areas where the snails are known to exist should be examined, especially the lids and corners.



Figure 7. **White garden snails, *Theba pisana* (Müller), aestivating at the top of a fence post at Kadina, South Australia.**

Credits: Vladimir Menkov

## Management

Past infestations of *T. pisana* in California have been controlled and eventually eradicated by the combined use of poison sprays, poison baits, burning, and hand-picking (Basinger 1927, Pilsbry 1939, Flint 2011). These campaigns

were invariably long and costly due, in part, to the way in which this snail hides itself for long periods by climbing up, on, and into bushes, trees, and man-made objects. Current recommendations include a variety of methods: cultural and mechanical methods, such as eliminating places to reduce concentrations that can more easily be checked, handpicking, traps and barriers; biological control with [predatory snails](#); and chemical baits, which, unfortunately, are toxic to all snails and slugs (Flint 2011).

Any control program in Florida would require the use of all the above in conjunction with detailed surveys of the ground, plantings, and structures within the infected areas. The use of herbicides may be necessary in overgrown areas. Mead (1971) recommends rigid quarantine and fumigation of all suspect shipments.

## Selected References

- Abbott RT. 1950. Snail invaders. *Natural History* 59: 80-85.
- Anonymous. 1961. Interceptions of special interest at U.S. ports of entry. *Cooperative Economic Insect Report* 11: 50.
- Basinger AJ. 1923. A valuable snail poison. *Journal of Economic Entomology* 16: 456-458.
- Basinger AJ. 1927. The eradication campaign against the white snail (*Helix pisana*) at La Jolla, California. *Monthly Bulletin of the California Department of Agriculture* 16: 51-76.
- Burch JB. 1960. Some snails and slugs of quarantine significance to the United States. *Agricultural Research Service, U.S. Department of Agriculture ARS* 82-1.
- Chace EP. 1915. *Helix pisana* Mueller in California. *Nautilus* 29: 72.
- Flint ML. (January 2011). Snails and slugs. *UC IPM Online*. <http://www.ipm.ucdavis.edu/PMG/PESTNOTES/pn7427.html> (14 July 2011).
- Hanna GD. 1966. Introduced mollusks of western North America. *Occasional Papers of the California Academy of Science* 48: 1-108.
- Johnson MS. 1980. Association of shell banding and habitat in a colony of a land snail *Theba pisana*. *Heredity* 45: 7-14.
- Kerney MP, Cameron RA. 1979. *A Field Guide to the Land Snails of Britain and Northwest Europe*. William Collins Sons and Co., Ltd. London. 288 pp.
- Mead AR. 1971. Helicid land mollusks introduced into North America. *The Biologist* 53: 104-111.
- Orcutt HA. 1919. Shells of La Jolla, California. *Nautilus* 33: 62-67.
- Pilsbry HA. 1939. *Land Mollusca of North America (north of Mexico)*. *Academy of Natural Sciences Philadelphia Monographs* 3: 1-573.
- Schultes FW. (February 2011). Species summary for *Theba pisana*. *AnimalBase*. <http://www.animalbase.uni-goettingen.de/zooweb/servlet/AnimalBase/home/species?id=1365> (14 July 2011.)
- Stefani T de. 1913. *L'Helix pisana* ei danni che puo arrecare agli agrumi. *Nuovi Annali Agric. Siciliana, N.S.* 1.