

Leafcutting Bees, Megachilidae (Insecta: Hymenoptera: Megachilidae: Megachilinae)¹

David Serrano²

Introduction

Leafcutting bees are important native pollinators of North America. They use cut leaves to construct nests in cavities (mostly in rotting wood). They create multiple cells in the nest, each with a single larva and pollen stored for the larvae to eat. Leafcutting bees are important pollinators of wildflowers, fruits, vegetables and other crops. Leafcutting bees, *Osmia* spp. are even used as commercial pollinators (like honey bees) in crops such as alfalfa and blueberries.

Distribution

Leafcutting bees are found throughout the world and are common in North America. In Florida there are approximately 63 different species (plus five subspecies) within seven genera of leafcutter bees: *Ashmeadiella*, *Heriades*, *Hoplitis*, *Coelioxys*, *Lithurgus*, *Megachile*, and *Osmia*.

Description

Leafcutting bees are mostly moderate-sized (around the size of a honey bee, ranging from 5 mm to 24 mm), stout-bodied, black bees. The females, except the parasitic *Coelioxys*, carry pollen on hairs



Figure 1. A leafcutting bee, *Megachile* sp. Credits: David Almquist and David Serrano, University of Florida

on the underside of the abdomen rather than on the hind legs like other bees. When a bee is carrying pollen, the underside of the abdomen appears light yellow to deep gold in color.

Biology

Leafcutting bees, as their name implies, use 0.25 to 0.5 inch circular pieces of leaves they neatly cut from plants to construct nests. They construct cigar-like nests that contain several cells. Each cell

1. This document is EENY-342, one of a series of Featured Creatures from the Entomology and Nematology Department, Florida Cooperative Extension Service, Institute of Food and Agricultural Sciences, University of Florida. Published: January 2005. Reviewed: March 2011. This document is also available on Featured Creatures website at <http://entomology.ifas.ufl.edu/creatures>. Please visit the EDIS website at <http://edis.ifas.ufl.edu>.

2. David Serrano, Department of Entomology and Nematology, University of Florida, Gainesville, FL.

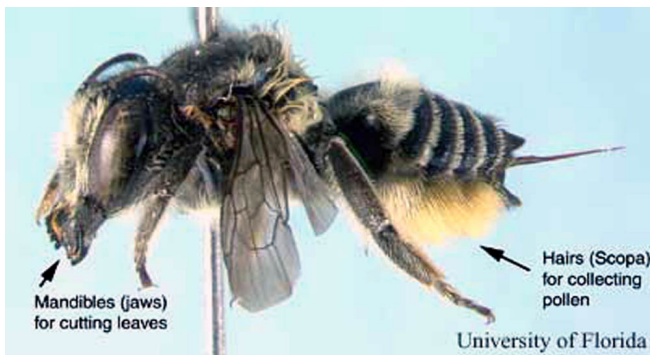


Figure 2. Side view of a female leafcutting bee, *Megachile medica* Cresson. Note the pollen-carrying hairs on the underside of the abdomen. Credits: David Serrano, University of Florida

contains a ball or loaf of stored pollen and a single egg. Therefore, each cell will produce a single bee. Leafcutting bees construct these nests in soil, in holes (usually made by other insects) in wood, and in plant stems. A diversity of cavities, such as shells of dead snails, holes in concrete walls (like those produced for hurricane shutters) and other holes in man-made objects are used as nesting sites.



Figure 3. Typical leaf damage caused by leafcutting bees, *Megachile* spp. The bees use the leaf pieces to construct nests. Credits: L.J. Buss, University of Florida



Figure 4. Nest of leafcutting bee pulled out of a cavity such as a hole in wood. This nest contains several cells; each cell will produce one adult leafcutting bee. Credits: .L. Castner, University of Florida

Most leafcutter bees overwinter in these nests as newly formed adults. In the following spring these adults chew their way out of the nest. Leafcutters are solitary bees and do not live in large groups or colonies like honey bees. Leafcutters do not aggressively defend nesting areas like honey or bumble bees. Their sting has been described as far less painful than that of a honey bee. Leafcutting bees will only sting if handled and therefore are not a stinging danger to people.

Host Plants

Leafcutting bees are important pollinators of many wildflowers. Leafcutter bees also pollinate fruits and vegetables and are used as pollinators by commercial growers of blueberries, onions, carrots and alfalfa.

Leafcutting bees use the leaves of almost any broadleaf deciduous plant to construct their nests. Some species of leafcutting bees use petals and resin in addition to leaves. The most commonly reported problem of leaf cutting comes from ornamental plants such as roses, azaleas, ash, redbud, bougainvillea and other plants with thin smooth leaves.

Natural Enemies

Many parasitoids attack the nests of leafcutting bees. Parasitoids include flies, wasps (Chrysididae, Mutillidae) and beetles (Rhipiphoridae, Meloidae and Cleridae). The Coelioxys, a genus within the leafcutting bee family, are cleptoparasites (they lay their eggs in the nests of other leafcutter bees and the young "steal" all of the stored pollen). Ants, (such as *Crematogaster* spp.) have been known to attack leafcutter bee nests.

Management Recommendations

Leafcutting bees can be considered a pest because of leaf cutting on ornamental plants. Although the cutting can destroy the aesthetics, it rarely harms the plant. Since leafcutting bees do not feed on the leaves they cut, insecticides are usually ineffective for preventing leaf cutting. Placing physical barriers such as cheesecloth on susceptible plants is a successful solution to preventing damage. These barriers should be used when leafcutting bees

are most active (when you begin to observe leaf cutting).

Eliminating nesting sites can reduce the number of leafcutting bees in your area. Small diameter holes (size of a nickel or smaller) in soft, rotting wood are an ideal nesting site for these bees. Holes that are plugged or stuffed with green or brown leaves are a positive sign that a leafcutter bee is nesting in that hole. Some leafcutter bees will nest in thick-stemmed plants (such as roses and bamboo) with hollowed openings. You can prevent nesting in rose canes by sealing pruned ends with wax (sealing or candle), thumbtacks, wooden dowels or white glue (a drop or two will do).

Selected References

Deyrup M, Kenny B. 2000. Florida's Fabulous Insects. World Publications. Tampa, FL

Leavengood Jr JM, Serrano D. 2005. A Distributional Checklist of the Leaf-Cutting Bees [Hymenoptera: Megachilidae] of Florida. *Insecta Mundi* (in press).

Mitchell TB. 1962. Bees of the Eastern United States (vol. II). Technical Bulletin Number 152. The North Carolina Agricultural Experiment Station.

Michener CD. 2000. The Bees of the World. Johns Hopkins University Press.

Preston-Mafham K, Preston-Mafham R. 2000. The Natural World of Bugs and Insects. PRC Publishing. London.