

# Garlic, Elephant — *Allium ampeloprasum* L. (*Ampeloprasum* group)<sup>1</sup>

James M. Stephens<sup>2</sup>

Elephant or greatheaded garlic is closely related to leek (Porrum group). This form of garlic produces very large bulbs that may weigh a pound or more. These huge bulbs consist of enlarged cloves, usually six per bulb. The cloves are milder than those of regular garlic, so that some people eat them raw.

## DESCRIPTION

The plant is quite large, but otherwise resembles the ordinary garlic. It flowers rapidly, forming a round composite flower head at the top of a long (12-18 inches) seed stalk called a scape. This scape is solid and becomes rather woody very quickly. Leaves are flat and thin.

## CULTURE

**Elephant garlic** is a vigorous plant in Florida gardens, as well as most other areas of the country. Space cloves 12 inches apart at planting and grow the same as onions. Starts are available through seed company catalogs.

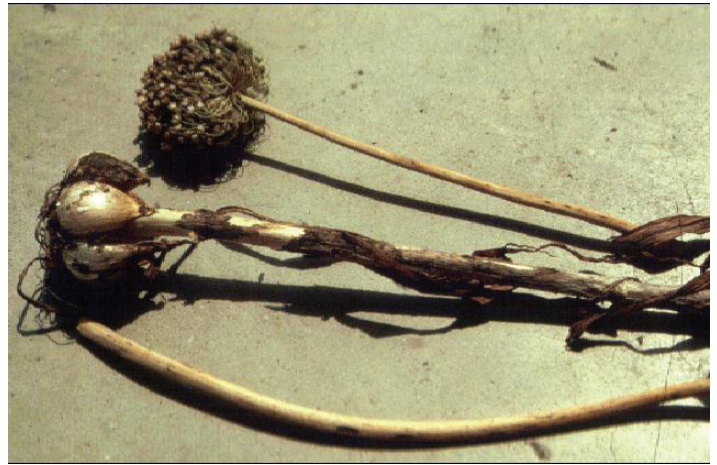


Figure 1. Elephant garlic.

1. This document is HS598, one of a series of the Horticultural Sciences Department, Florida Cooperative Extension Service, Institute of Food and Agricultural Sciences, University of Florida. Original publication date May 1994. Revised March 2009. Reviewed February 2012. Visit the EDIS website at <http://edis.ifas.ufl.edu>.
2. James M. Stephens, Professor, Horticultural Sciences Department, Cooperative Extension Service, Institute of Food and Agricultural Sciences, University of Florida, Gainesville FL 32611.