



# Transporting Pesticides and Understanding the Rules of the Road: Pest Control Businesses<sup>1</sup>

---

F.M. Fishel<sup>2</sup>

This EDIS document addresses the concern for transporting pesticides that are regarded as hazardous materials by the Secretary of Transportation. This document is specifically written to provide information for those who are in the pest control service industry. A similar EDIS document also exists that addresses the transport of hazardous materials by farmers and ranchers.

## Introduction

Some pesticides are considered by the U.S. Department of Transportation (DOT) to be hazardous materials. A hazardous material is a substance or material which has been determined to be capable of posing an unreasonable risk to health, safety, and property when transported in commerce. Transporting any hazardous material can be risky, so regulations have been established to protect transporting employees, people around them, and the environment. The regulations inform shippers how to package the materials safely and drivers how to load, transport, and unload the material. Shippers and

manufacturers communicate the risk by putting hazard warning labels on packages, providing proper shipping papers, emergency response information, and placards on transportation vehicles and vessels.

## How do I know if these regulations apply to me?

The first step is to determine whether you're transporting hazardous materials. The DOT is a good source of information because they have identified those hazardous materials and substances that potentially cause an unreasonable risk to health, safety, and property when transported. There are several ways to identify whether the pesticides you transport are hazardous materials:

- There are approximately 5,000 materials regulated by the DOT as hazardous materials, the majority of which are not pesticides. These materials may be searched directly in the table by going to the HMT electronic document at <http://ecfr.gpoaccess.gov/cgi/t/text/text-idx?c=ecfr&sid=4a0db077c9d9e0a971e0d1b8c75>

---

1. This document is PI-161, one of a series of the Agronomy Department, Florida Cooperative Extension Service, Institute of Food and Agricultural Sciences, University of Florida. Original publication date January 2008. Reviewed March 2011. Visit the EDIS website at <http://edis.ifas.ufl.edu>.

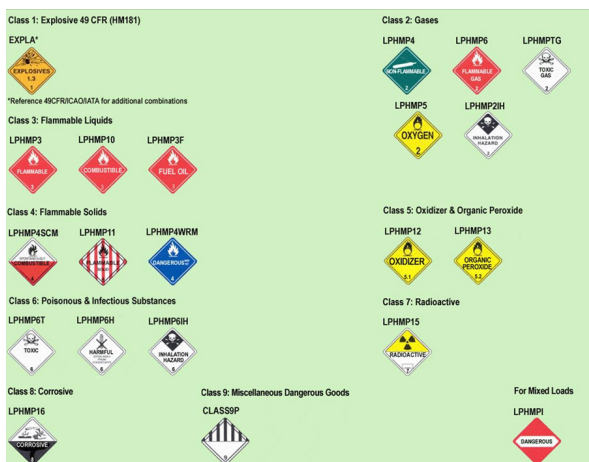
2. F.M. Fishel, associate professor, Agronomy Department, and director, Pesticide Information Office; Florida Cooperative Extension Service, Institute of Food and Agricultural Sciences, University of Florida, Gainesville, 32611.

**All chemicals should be used in accordance with directions on the manufacturer's label. Use pesticides safely. Read and follow directions on the manufacturer's label. The use of trade names in this publication is solely for the purpose of providing specific information. UF/IFAS does not guarantee or warranty the products named, and references to them in this publication does not signify our approval to the exclusion of other products of suitable composition.**

The Institute of Food and Agricultural Sciences (IFAS) is an Equal Opportunity Institution authorized to provide research, educational information and other services only to individuals and institutions that function with non-discrimination with respect to race, creed, color, religion, age, disability, sex, sexual orientation, marital status, national origin, political opinions or affiliations. U.S. Department of Agriculture, Cooperative Extension Service, University of Florida, IFAS, Florida A. & M. University Cooperative Extension Program, and Boards of County Commissioners Cooperating. Millie Ferrer-Chancy, Interim Dean

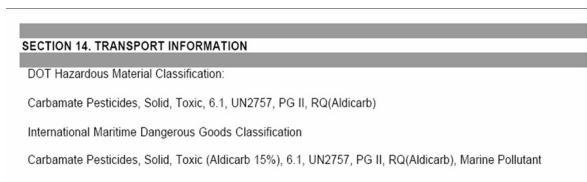
90d7b&rgn=div5&view=text&node=49:2.1.1.3.7&idno=49. An example of an entry of a pesticide in the Hazardous Material Table is shown in Table 1.

- The product's packaging will identify it as a hazardous material. Most noticeably, the packaging will contain one or more diamond-shaped DOT labels. These are known as a “square-on-point;” and, there will also be a number listed at the bottom of the point (Figure 1). These numbers represent the DOT hazard classification according to their system (Table 2).



**Figure 1.** Examples of DOT-acceptable hazardous materials labels.

- Check the “Transportation Information” on the Material Safety Data Sheet (MSDS). See example shown in Figure 2.



**Figure 2.** Example of hazardous material identification on the MSDS.

- Shipments of hazardous materials will have a shipping paper. This is the proper description of the material being transported. It may come in several forms including bills of lading, invoices, or delivery tickets. An example of information that may be seen in a shipping paper is shown in Table 3, and an example of a shipping paper is shown in Table 4. More detailed information on shipping papers is also contained in this document.

## What type of driver's license is required for transporting hazardous materials?

If you drive a vehicle that has an amount requiring placarding, then a Class “C” Commercial Driver's License is necessary. The driver is also required to have an “H” endorsement with their Commercial Drivers License. The “H” endorsement indicates a vehicle used to transport hazardous materials in placardable amounts. Information on Commercial Driver's Licenses may be obtained from the Florida Department of Highway Safety and Motor Vehicles at <http://www.flhsmv.gov/>.

## Even though I transport pesticides classified as hazardous materials, could I be exempt from the DOT regulations?

The DOT regulations are written for the transportation industry. Many companies routinely transport pesticides and fuels for support of their operation. Businesses that transport small quantities of certain hazardous materials may be exempt. This exemption is known as a Material of Trade (MOT) provision. Check for the following concerning the products you are using:

- There should be a diamond-shaped DOT label on the packaging; if there is no DOT label, then the product is not considered hazardous and doesn't have to be listed.
- If you see the diamond-shaped DOT label, make note of the hazard classification number at the bottom of the diamond.
- Check the capacity of the containers that you transport.
- If the DOT diamond-shaped label is present, look for the packing group number in the center of the diamond. It will be either:
  - o PG I = material poses great danger;
  - o PG II = material poses medium danger;
  - o PG III = material poses minor danger.

If this information is not on the diamond found on the packaging, it can likely be found on the MSDS, shipping papers provided, the supplier or product manufacturer should know.

- Determine the total weight of the product being transported. Under DOT regulations, a 50-pound bag of product represents 50 pounds regardless of whether the actual amount of active ingredient is much less. Some laws regulate by the amount of active ingredient, not the total weight; this isn't the case with the DOT.

Based on the information you obtained from the items listed above, MOT meets any one of the following and is exempt:

- Class 3, 8, 9, Division 4.1, 5.1, 6.1, or other regulated materials, contained in one package with a capacity of no more than:
  - o 1 pound or 1 pint for a PG I material;
  - o 66 pounds or 8 gallons for a PG II, PG III, or other regulated materials; or
  - o 400 gallons of a diluted mixture not to exceed a 2 percent concentration of a class 9 material;
  - o 220 pounds of a Division 2.1 or 2.2 material in a cylinder; and
  - o A one-ounce package (or less) of a Division 4.3, PG II, or PG III material.

No more than 440 pounds of any hazardous material not specified above may be transported. If all the DOT hazardous materials that you transport fit the previous exceptions, they are considered MOTs and you are exempt from the requirements if the following are also met:

- Packaging must be leak-proof for liquids and gases, sift-proof for solids.
- Packages must be securely closed, secured against movement, and protected against damage.
- Gasoline must be contained in containers approved by DOT or the Occupational Safety and Health Administration (OSHA).
- Cylinders and pressure vessels must be marked with the proper shipping name and must have the identification number and DOT label attached.

- A non-bulk package other than a cylinder (including receptacles transported without outer packaging) must be marked with a common name to identify the contents, including the letters "RQ" if it contains a Reportable Quantity of a hazardous substance.
- A tank that contains a diluted mixture (not more than 2 percent concentration) of a Class 9 material must be marked on two opposite sides with the 4-digit United Nations (UN) or North America (NA) identification number.
- The operator of a motor vehicle that contains MOT must be informed of the presence and amount of the hazardous material.

### The details of shipping papers

A shipper who obligates someone else to transport hazardous materials is required to prepare a shipping paper and provide a copy to the driver of the vehicle. The shipping paper must be with the driver during the transfer of hazardous materials. If more hazardous materials are added later during transport, then the shipping papers must be updated, or an additional paper generated for the added load. If hazardous materials are off-loaded, some companies may keep a running tally of the hazardous materials off-loaded. Although this is not a requirement, it could prove to be useful should a driver need to explain to a DOT inspector or emergency responder why the current load is less than that listed on the shipping paper. There is no specific format requirement for a shipping paper, but the required criteria are:

- Hazardous materials must be listed first if non-hazardous materials are on the same load;
- Hazardous materials must be entered or highlighted in a color that contrasts with any non-hazardous materials listed;
- Hazardous materials must be identified by an "X" or "RQ" before the proper shipping name in the hazardous materials column. The letters, "RQ" is used instead of "X" if a reportable quantity is present in one package.

## Vehicle placarding requirements

When a vehicle transports any amount of a hazardous material, placards (Figure 1) must be placed on each side, the front, and rear of the vehicle. There are minimum size requirements to meet placard specifications:

- Each side: 10.8 inches.
- Inner border: must be a solid line 1/2 inch from the edges.
- Class text and division numbers: 1.6 inches in height.

The vehicle DOT registration numbers must be at least 2 inches high, displayed on both sides of the vehicle, and be in a color of contrast to the vehicle.

## Who to call in case of an accident

A general sequence of resources to call is:

1. Notify your agency, organization, or home office.
2. Call the emergency response telephone number listed on the shipping paper.
3. Call Chemtrec at 1-800-262-8200.

With each call, provide as much information as is possible to do in a safe manner:

- Your name, telephone and fax numbers.
- Location and nature of problem.
- Name and identification number of material(s) involved.
  - Shipper/consignee/point of origin.
- Truck number.
- Container type and size.
- Quantity of material transported/released.
- Local conditions, such as weather and proximity to hospitals, schools, and bodies of water.

- Any injuries and exposures.
- Local emergency services that have been notified.

## Employee training

Those who work around hazardous materials, including drivers, are required to receive hazardous materials training. The required components of the training include:

- General awareness.
- Instructions related to the employee's specific job responsibilities.
- Safety training.
- Security awareness.

Sources of training resources may be obtained from the U.S. DOT by calling 1-800-HMR49-22 or online at

[https://hazmatonline.phmsa.dot.gov/services/publication\\_documents/measure\\_up.pdf](https://hazmatonline.phmsa.dot.gov/services/publication_documents/measure_up.pdf). The person offering training must be qualified through experience, possess a commercial drivers license with appropriate endorsements, or have attended an instructor training program. The U.S. DOT also offers training seminars throughout the U.S. at various dates and locations. For information, see <http://www.phmsa.dot.gov/hazmat/training-outreach>. Initial training must be completed within 90 days of employment or change in job function. The training must be repeated at least once every three years. Training from a previous employer or source may be used to satisfy the requirements provided that a record of the training is obtained. The training and testing documentation records that an employer must keep on file include the following:

- Employee's name.
- Completion date of most recent training.
- Training materials (copy, description, or location).
- Name and address of trainer.

- Certification that the employee was trained and tested.

Testing is required, but is left to the discretion of the employer. There are no DOT specifications for the elements of the test. The test may be written, oral, performance-based, or any combination thereof.

### **Additional Information**

Chemtrec. (CHEMical TRansportation Emergency Center). 1-800-262-8200. <http://www.chemtrec.org/Chemtrec/>. (Last viewed November 9, 2007).

Fishel, F.M. 2005. Understanding Material Safety Data Sheet Language. UF/IFAS EDIS Document PI-35. <http://edis.ifas.ufl.edu/PI072>. (Last viewed November 9, 2007).

Florida Department of Highway Safety and Motor Vehicles. (850) 617-2000. <http://www.flhsmv.gov/>. (Last viewed November 9, 2007).

Florida Department of Transportation. 866-374-FDOT (3368). <http://www.dot.state.fl.us/>. (Last viewed November 9, 2007).

National Archives and Records Administration. Code of Federal Regulations. 866-512-1800. <http://www.gpoaccess.gov/cfr/index.html>. (Last viewed November 9, 2007).

National Response Center. 800-424-8802. <http://www.nrc.uscg.mil/nrchp.html>. (Last viewed November 9, 2007).

Nesheim, O.N. and F.M. Fishel. 2005. Proper Disposal of Pesticide Waste. UF/IFAS EDIS Document PI-18. <http://edis.ifas.ufl.edu/PI010>. (Last viewed November 9, 2007).

Office of Hazardous Materials Safety. 2004 Emergency Response Guidebook. <http://phmsa.dot.gov/hazmat/library/erg>. (Last viewed November 9, 2007).

United States Department of Transportation. 202-366-4000. <http://www.dot.gov/>. (Last viewed November 9, 2007).

United States Department of Transportation. Hazardous Materials Table. <http://ecfr.gpoaccess.gov/cgi/t/text/text-idx?c=ecfr&sid=4a0db077c9d9e0a971e0d1b8c7590d7b&rgn=div5&view=text&node=49:2.1.1.3.7&idno=49>. (Last viewed November 9, 2007).

**Table 1.** Example of a pesticides entry into the Hazardous Materials Table\*.

Symbols	Hazardous materials description and proper shipping names	Hazard class or Division	Identification Numbers	PG	Label Codes	Special provisions (§172.102)	Packaging (§173.***)			Quantity limitations		Vessel stowage	
							Exceptions	Non-bulk	Bulk	Passenger aircraft-rail	Cargo aircraft only	Location	Other
	Aluminum phosphide pesticides	4.3	UN1397	I	4,3, 6.1	A8, A19, N40	A8, A19, N40	211	242	Forbidden	15 kg	E	40, 85

\* A full description of column entries is defined in the HMT electronic document.

**Table 2.** DOT hazard classification system.

Class	Division	Name of Class or Division
1, Explosives	1.1	Mass explosives
	1.2	Projection hazard, no mass explosives
	1.3	Fire and minor blast or projection hazard or both
	1.4	Minor blast hazard
	1.5	Insensitive mass explosion hazards
	1.6	Extremely insensitive detonating substances
2, Gases	2.1	Flammable gases
	2.2	Non-flammable, compressed gases
	2.3	Poison gases
3, Flammable liquids		
4, Flammable solids	4.1	Flammable solids
	4.2	Spontaneously combustible
	4.3	Dangerous when wet
5, Oxidizers and organic peroxides	5.1	Oxidizers
	5.2	Organic peroxides
6, Toxic/poisonous materials	6.1	Poison (toxic material)
	6.2	Infectious substances
7, Radioactive		
8, Corrosives		
9, Miscellaneous hazardous materials		

**Table 3.** Checklist for items that may be contained in a hazardous materials shipping paper.

Shipping Description. Use the acronym <b>“ISHP”</b> to assist in remembering the proper sequence of the Basic Description.
<b>Basic Description Proper Sequence - Items found in the Hazardous Materials Table (HMT). A full description of each may be found directly in the HMT document.</b>
_ Identification Number (HMT column 4)
_ Proper Shipping Name (HMT column 2)
_ Hazard Class (HMT column 3)
_ Packing Group (HMT column 5, PG I = great danger; PG II = medium danger; PG III = minor danger)
<b>Other Information</b>
_ Technical name (HMT column 1 identified by the letter, “G”)
_ Subsidiary hazard(s) (HMT column 6)
_ Number and type of packages
_ Total quantity
_ Net explosive mass (pertains to Class 1 materials)
_ “EX-xxxx” for Class 1 materials when not marked on the package
<b>Additional Descriptions</b>
_ “DOT-SPxxxx” or “DOT-Exxxxx” – Special Permit or Exemption number
_ “Ltd Qty” or “Limited Quantity”
_ “RQ” for Reportable Quantity (seen in Appendix A of the HMT)

**Table 3.** Checklist for items that may be contained in a hazardous materials shipping paper.

<input type="checkbox"/> “Residue: Last Contained” (Required for tank car with residue)
<input type="checkbox"/> “Marine Pollutant” (seen in Appendix B of the HMT)
<input type="checkbox"/> “Poison – Inhalation Hazard” or “Toxic – Inhalation Hazard”
<input type="checkbox"/> “HOT” for liquid elevated temperature materials, when molten or elevated temperature is not part of proper shipping name
<input type="checkbox"/> “Organic Peroxides”
<input type="checkbox"/> “Waste”
<input type="checkbox"/> “Radioactive Material”
<input type="checkbox"/> Mode Requirements – additional information may be required depending on specific mode(s) of transport
<b>Emergency Response Telephone Number</b>
<input type="checkbox"/> “EMERGENCY CONTACT: xxx-xxx-xxxx”
<b>Shippers Certification</b>
<input type="checkbox"/> Signed statement: “This is to certify that the above-mentioned materials ”

**Table 4.** Example shipping paper.

<b>Shipping Paper</b>				
TO:	Killz Bugz Pesticide Dealership, 88 Dead Bug Way, Anywhereville, U.S.	FROM:	MegaChem Corp., 22 Superfund Trail, Wasteland, U.S.	Page 1 of 1
Quantity	HM	Description**		Weight
1 cylinder	RQ	Aluminum phosphide, 4.3 (6.1), UN1397 Dangerous When Wet, Poison		100 lbs
This is to certify that the above named materials are properly classified, described, packaged marked and labeled, and are in proper condition for transportation according to the applicable regulations of the United States Department of Transportaion.				
Shipper:	MegaChem Corp.	Carrier	Haulzt	
Per:	Nelson Nozzlehead	Per:	Bubba Bear	
Date:	June 12, 2007	Date:	June 14, 2007	
<b>Special Instructions:</b> 24 hour Emergency Contact, Nelson Nozzlehead, 1-800-111-1111				

\* RQ means that this is a reportable quantity.

\*\* Aluminum phosphide is the proper shipping name from Column 2 of the HMT; 4.3 and 6.1 are the Hazard Classes listed in Column 3 of the HMT; UN1397 is the Identification Number from Column 4 of the HMT.