

Powdery Mildew of Strawberries¹

N. A. Peres and J. C. Mertely²

Powdery mildew, *Podosphaera aphanis* (syn. *Sphaerotheca macularis*), occurs in most areas of the world where strawberries are grown.

Pathogen and Symptoms

P. aphanis infects leaves, flowers, and fruit. Early foliar infections are characterized by small white patches of fungus growing on the lower leaf surface. On susceptible cultivars, dense mycelial growth and numerous chains of conidia (spores) give these patches a powdery appearance (Figure 1). Under favorable conditions, the patches expand and coalesce until the entire lower surface of the leaf is covered (Figure 2). In some strawberry cultivars, relatively little mycelium is produced, making it difficult to see the white patches. Instead, irregular yellow or reddish-brown spots develop on colonized areas on the lower leaf surface and eventually break through to the upper surface (Figure 3). The edges of heavily infected leaves curl upward (Figure 4). At times, dark round structures (cleistothecia) are produced in the mycelia on the undersides of leaves (Figure 5). Cleistothecia are initially white but turn black as they mature. The fungus also infects flowers, which may produce aborted or malformed fruit. In addition, *P. aphanis* colonizes older fruit, producing a fuzzy mycelial growth on the seeds (Figure 6). Both types of infection may reduce fruit quality and marketable yields.



Figure 1. *Podosphaera aphanis* mycelia on strawberry leaf surface. Credits: UF, GCREC

Disease Development and Spread

P. aphanis is an obligate parasite that only infects living tissue of wild or cultivated strawberry. The fungus readily infects living, green leaves in the nursery. Thus, infected transplants are normally the primary source of inoculum for fruiting fields in Florida. When conditions are favorable, conidia produced on infected plants are wind dispersed. Powdery mildew development and spread are favored by moderate to high humidity and temperatures between

1. This document is PP-208, one of a series of the Plant Pathology Department, Florida Cooperative Extension Service, Institute of Food and Agricultural Sciences, University of Florida. Original publication date January 2004. Revised May 2013 and September 2018. Visit the EDIS website at <http://edis.ifas.ufl.edu>.
2. N. A. Peres, professor, Plant Pathology Department, and J. C. Mertely, Biological Scientist IV, Gulf Coast Research and Education Center--Wimauma, FL; Florida Cooperative Extension Service, Institute of Food and Agricultural Sciences, University of Florida, Gainesville, FL 32611.

The use of trade names in this publication is solely for the purpose of providing specific information. UF/IFAS does not guarantee or warranty the products named, and references to them in this publication does not signify our approval to the exclusion of other products of suitable composition.

The Institute of Food and Agricultural Sciences (IFAS) is an Equal Opportunity Institution authorized to provide research, educational information and other services only to individuals and institutions that function with non-discrimination with respect to race, creed, color, religion, age, disability, sex, sexual orientation, marital status, national origin, political opinions or affiliations. For more information on obtaining other UF/IFAS Extension publications, contact your county's UF/IFAS Extension office. U.S. Department of Agriculture, UF/IFAS Extension Service, University of Florida, IFAS, Florida A & M University Cooperative Extension Program, and Boards of County Commissioners Cooperating. Nick T. Place, dean for UF/IFAS Extension.



Figure 2. Lower leaf surface of strawberry covered with powdery mildew.

Credits: UF, GCREC

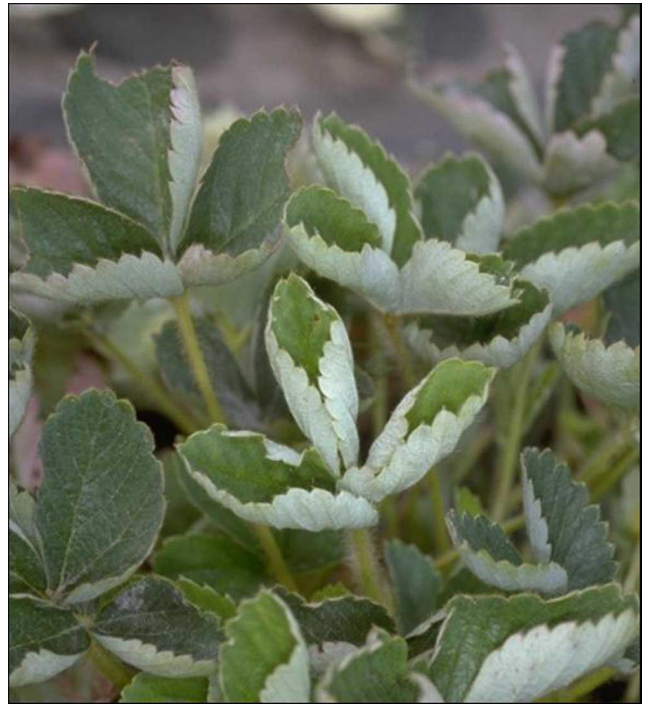


Figure 4. Curling leaves on plants severely infected with powdery mildew.

Credits: UF, GCREC



Figure 3. Reddish-brown spot reaction caused by *Podosphaera aphanis* in some cultivars.

Credits: UF, GCREC

60°F and 80°F. Rain, dew, and overhead irrigation inhibit fungal development. The disease is typically more severe in plantings under greenhouse or plastic tunnels. In open fields in Central Florida, the disease is typically most severe in November and December, usually subsides in January and early February, and may reappear in late February and March.

Control

Using powdery mildew-free transplants would be a good method to control the disease, but these are difficult to find and even disease-free fields can become infected by conidia blown in from neighboring fields. Cultivars differ

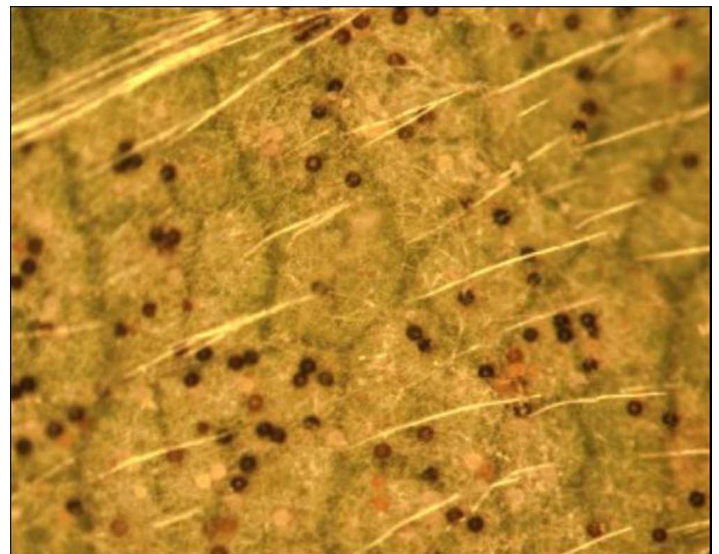


Figure 5. Micrograph of *Podosphaera aphanis* cleistothecia on leaf surface.

Credits: UF, GCREC

in their resistance to powdery mildew. ‘Florida Radiance’, ‘Winterstar’, and ‘Florida Brilliance’ are moderately susceptible whereas ‘Florida127’ and ‘Florida Beauty’ are highly susceptible to powdery mildew. Fields with susceptible cultivars should be surveyed regularly for powdery mildew, especially early in the season. Fungicides should be applied preventively or at the first sign of disease to control powdery mildew on susceptible cultivars. This is especially important when using protectant fungicides,



Figure 6. *Podosphaera aphanis* on strawberry achenes.
Credits: UF, GCREC

such as elemental sulfur. Systemic fungicides have some limited curative action. These include Quintec (quinoxifen) and Torino (cyflufenamid), which have different modes of action and can be applied in alternation. Another group of products include Rally® (myclobutanil), which was formerly named Nova®; Procure® (triflumizole); Orbit® (propiconazole); and Mettle (tetraconazole). These products are treated as a group since they belong to the same fungicide class and have similar properties. For this reason, they should be rotated with other fungicides with different properties to avoid the development of resistance. Other rotational options include Merivon® (pyraclostrobin + fluxapyroxad) and Fontelis™ (penthioapyrad). None of these products should be applied more than four times per season. Usually, controlling foliar infection helps to prevent fruit infection.

Table 1. Fungicides recommended for control of powdery mildew of strawberries in Florida

Product name (active ingredient)	Fungicide group ^a	Maximum rate per acre		Minimum days to harvest	Remarks
		Application	Season		
(Sulphur) Many brands ^b	M2	Varies	Varies	1	Do not use when temperatures exceed 85°F.
Rally® 40 WSP Nova® 40 W Sonoma® 40 WSP (Myclobutanil)	3	5 oz.	30 oz.	0	Do not plant rotational crops until 30 days after last application.
Orbit® Tilt® Bumper® 41.8 EC (propiconazole)	3	4 fl. oz.	16 fl. oz.	0	Do not make more than two consecutive applications.
Procure® 50WS (triflumizole)	3	8 oz.	32 oz.	1	Do not plant leafy vegetables within 30 days, root vegetables within 60 days, or rotational crops not on label for 1 year after application.
Mettle® 125 ME (tetraconazole)	3	5 fl. oz.	20 fl. oz.	0	Do not apply same product within 14 days; do not make more than four applications per season.
Rhyme (flutriafol)	3	7 fl. oz.	28 fl. oz.	0	Do not apply more than 4 applications per year.
Quilt Xcel® (propiconazole + azoxystrobin)	3 + 11	14 fl. oz.	56 fl. oz.	0	Do not make more than two consecutive applications and no more than four applications/crop.
Fontelis™ (penthiopyrad)	7	24 fl. oz.	72 fl. oz.	0	Do not make more than two sequential applications before alternating to a fungicide from a different group.
Meviron® (boscalid + fluxapyroxad)	7 + 11	11 fl. oz.	33 fl. oz.	0	Do not make more than two consecutive applications before alternating to another non-group 7 or non-group 11 fungicide.
Quintec® (quinoxifen)	13	6 fl. oz.	24 fl. oz.	1	Do not make more than two consecutive applications or more than four applications per crop; do not plant crops not on label for 30 days after application.
Torino® (cyflufenamid)	U6	3.4 oz.	6.8 oz.	0	Do not make more than two applications per year; do not apply more than once every 14 days.

^a Fungicide group (FRAC Code): Numbers (1–37) and letters (M) are used to distinguish the fungicide mode of action groups. All fungicides within the same group (with same number or letter) indicate same active ingredient or similar mode of action. This information must be considered when making decisions about how to manage fungicide resistance. M = multisite inhibitors; fungicide resistance risk is low. Source: <http://www.frac.info/>

(FRAC = Fungicide Resistance Action Committee).

^b For example, Kumulus® DF, Micro Sulf®, Microfine Sulfur, Microthiol® Disperss®, Sulfur 90W, Wettable Sulfur, Wettable Sulfur 92, Yellow Jacket Dusting Sulfur, Yellow Jacket Wettable Sulfur

Always read a current product label before applying any chemicals.