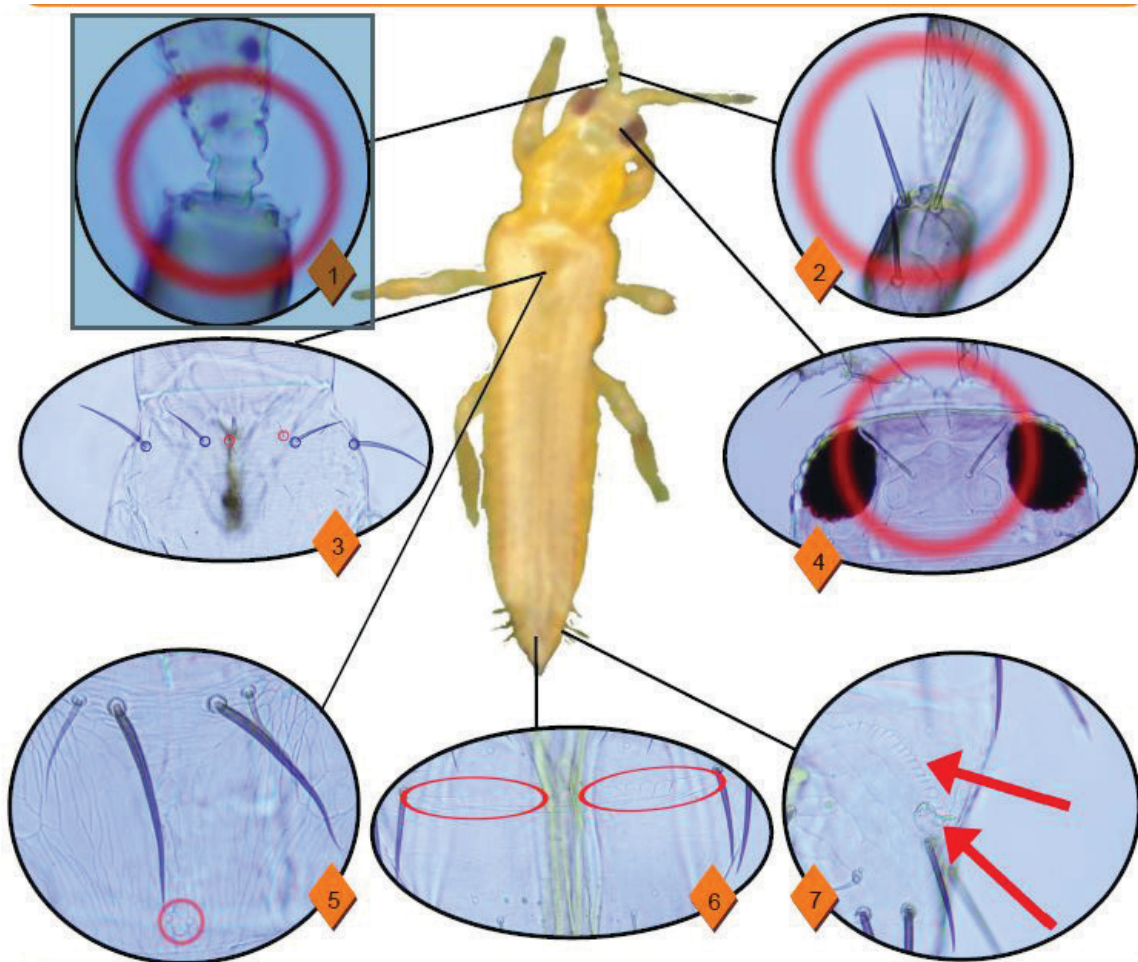


# Pest Information Guide: Eastern Flower Thrips *Frankliniella tritici* (Fitch)<sup>1</sup>

Jeffrey D. Cluever and Hugh A. Smith<sup>2</sup>

## Morphology



Credits: Jeffrey D. Cluever, UF/IFAS

1. This document is ENY-894, one of a series of the Entomology and Nematology Department, UF/IFAS Extension. Original publication date July 2016. Reviewed September 2019. Visit the EDIS website at <https://edis.ifas.ufl.edu> for the currently supported version of this publication.
2. Jeffrey D. Cluever, former MS student, Entomology and Nematology Department; and Hugh A. Smith, assistant professor, Entomology and Nematology Department, UF/IFAS Gulf Coast Research and Education Center; UF/IFAS Extension, Gainesville, FL 32611.

The Institute of Food and Agricultural Sciences (IFAS) is an Equal Opportunity Institution authorized to provide research, educational information and other services only to individuals and institutions that function with non-discrimination with respect to race, creed, color, religion, age, disability, sex, sexual orientation, marital status, national origin, political opinions or affiliations. For more information on obtaining other UF/IFAS Extension publications, contact your county's UF/IFAS Extension office. U.S. Department of Agriculture, UF/IFAS Extension Service, University of Florida, IFAS, Florida A & M University Cooperative Extension Program, and Boards of County Commissioners Cooperating. Nick T. Place, dean for UF/IFAS Extension.

1. Extremely convex pedicel at base of antennal segment III.
2. Setae arising from antennal segment II not forming stout spines.
3. Four major setae on anterior margin of pronotum (blue); 2 minor setae (red).
4. Ocellar III setae not arising between posterior ocelli.
5. Metanotal campaniform sensilla present.
6. Comb on tergite VIII interrupted in center.
7. Ctenidium (upper arrow) on tergite VIII anterior to spiracle (lower arrow).

## Appearance

### Egg

Small and embedded in foliage. Unlikely to be seen.

### Larvae

Light in color, wingless, appear similar to other *Frankliniella* thrips, usually not identified.

### Pupal Stages

Presence of wing buds with straight antennae (prepupa) or with antennae pulled back over the head (pupa). These are not typically identified.

### Adult

Yellow in color. As with other *Frankliniella* spp., it has four major setae on the anterior margin of the pronotum. Also indicative of *Frankliniella* spp., it has ctenidia (oblique rows of fine hairs [often appearing as dots]) on tergite VIII anterior to the spiracles.

### OTHER DIAGNOSTIC FEATURES

Pedicel (base of antennal segment III) is strongly convex, though not quite forming a flange. Ocellar III setae (large pair nearest the ocelli) do not arise between posterior ocelli. Metanotal campaniform sensilla (small sensory structures that appear like two small dots) present. The comb on tergite VIII (row of microtrichia) is interrupted in the center.

## Life Cycle

*F. tritici* exhibits all the life stages common to terebrantian thrips: the egg, larva I, larva II, prepupa, pupa, and the adult stage. The length of each life stage and number of eggs laid per female varies according to temperature and host plant.

In a study in South Carolina seasonal averages were as follows:

1. The female lays an egg into the plant foliage; 3.3 days later it hatches.
2. The larva I and II feed for 2.0 and 2.4 days respectively.
3. The quiescent prepupa and pupa last 1.1 and 2.4 days respectively.

## Host Range and Distribution

Wide host range, including asparagus, brambles, chrysanthemum, cotton, peach, rose, rye, soybean, strawberry, tomato, and various wild species of plants.

### Origin

Eastern North America.

### Global Distribution

Asia, Caribbean, Europe, and North America.

### UNITED STATES

Primarily east of the Rockies.

### FLORIDA

Northern.

## Types of Injury

This species is primarily a flower feeder, so most damage is seen on the flower or fruit. If feeding occurs on the foliage it may cause silvering. Feeding on the bloom can cause petal browning or malformed fruit. Feeding on the fruit can cause scarring or bronzing. Occasionally one may see oviposition blisters where the female has laid her eggs.