

# Postflight Data Processing Instructions on the Use of Unmanned Aerial Vehicles (UAVs) for Agricultural Applications<sup>1</sup>

Sri Charan Kakarla and Yiannis Ampatzidis<sup>2</sup>

The purpose of this document is to provide guidance on the use of post-processing software to visualize data collected by unmanned aerial vehicles (UAVs) for agricultural applications. Post-processing software are used to process the UAV-collected data to create several types of maps, based on the application and type of sensor(s) used for data collection. These maps can include orthomosaics, 3D maps, digital elevation models, plant health or stress status maps (e.g., normalized difference vegetation index—NDVI maps), etc. There are several data processing and analysis software on the market; most of them require a subscription fee. The software mentioned in this document, Pix4Dmapper, has a one-time subscription fee of \$1,990 for educational use and \$4,990 for regular use. This document provides step-by-step instructions for using the data collected from a UAV flight to create several types of maps and indices.

## Introduction

Remote sensing applications for agriculture often require periodically collected high-resolution data, which are difficult to obtain by manned flights or satellite imagery due to low resolution and high cost. Small unmanned aerial vehicles (UAVs) equipped with GPS (Global Positioning

System) and various sensors can solve this problem by providing high-resolution data in less time and at low cost. They also have an added advantage of scheduling flexibility (Matese et al. 2015). Data collected from UAVs are processed using photogrammetry techniques to extract various vegetation indices such as the normalized difference vegetation index (NDVI), the green normalized difference vegetation index (GNDVI), and the soil-adjusted vegetation index (SAVI), which can be used to examine the vegetation vigor of a crop (Candiago et al. 2015). Díaz-Varela et al. (2015) and Feng et al. (2015) used orthomosaics created using photogrammetry techniques to assess olive tree crown parameters and map urban vegetation. Guan et al. (2019) successfully correlated high-resolution NDVI data with fertilizer application levels to identify differences in crop growth status. UAVs have been used in various instances to identify tree stress in citrus groves by utilizing a multispectral camera (Garcia-Ruiz et al. 2013), perform high throughput phenotyping in citrus (Ampatzidis and Partel 2019; Ampatzidis et al. 2019), and map the vigor of vineyards using NDVI maps (Matese et al. 2013). There are several other applications for data collected from UAVs. This document presents a step-by-step process for data

1. This document is AE533, one of a series of the Department of Agricultural and Biological Engineering, UF/IFAS Extension. Original publication date October 2019. Visit the EDIS website at <https://edis.ifas.ufl.edu> for the currently supported version of this publication.
2. Sri Charan Kakarla, engineering and research technologist; and Yiannis Ampatzidis, assistant professor, Department of Agricultural and Biological Engineering, UF/IFAS Southwest Florida Research and Education Center; UF/IFAS Extension, Gainesville, FL 32611.

The use of trade names in this publication is solely for the purpose of providing specific information. UF/IFAS does not guarantee or warranty the products named, and references to them in this publication do not signify our approval to the exclusion of other products of suitable composition.

The Institute of Food and Agricultural Sciences (IFAS) is an Equal Opportunity Institution authorized to provide research, educational information and other services only to individuals and institutions that function with non-discrimination with respect to race, creed, color, religion, age, disability, sex, sexual orientation, marital status, national origin, political opinions or affiliations. For more information on obtaining other UF/IFAS Extension publications, contact your county's UF/IFAS Extension office. U.S. Department of Agriculture, UF/IFAS Extension Service, University of Florida, IFAS, Florida A & M University Cooperative Extension Program, and Boards of County Commissioners Cooperating. Nick T. Place, dean for UF/IFAS Extension.

processing to create orthomosaics, reflectance maps, and index maps using data collected from UAV flights.

## Off Field Postflight

After you return from the field with the UAV-collected data, you must follow several steps in order to create various types of maps. Another document presents step-by-step preflight and flight instructions.

### Collected Data

1. Copy all the data from the memory card to the computer you are working on. It is recommended to have a backup of the data in another location.
2. Check the collected data to verify if everything looks good (e.g., check the quality and resolution of the images).
3. If collecting data for several fields, sort out all the data and arrange them into different folders based on the field numbers.
4. Make sure you delete extraneous data. For example, when taking off with a sensor independent of the UAV, the sensor starts collecting data before takeoff and after landing until it is powered off. These data may not be useful to the mission, and deleting them can save some processing time. Another example is when the same flight covers two different areas that are far apart from each other. The data recorded between the blocks may not be useful and can be deleted.

### Calibration

Almost every spectral sensor needs calibration. The manufacturer of the sensor usually supplies all the required tools. Following the calibration instructions and procedures is essential. If using a sensor that needs calibration, make sure you have the calibration values for each individual band on the spectrum you are using. In this case, you will always have to collect data pertaining to calibration before a flight mission. This information is usually collected before the start of the mission, or in some cases it is part of the data collected. The type of method depends on the manufacturer of the sensor. If these data are part of the data collected, the user will have to manually find them; otherwise, the data have to be collected before the flight. This information will be used in post-processing to calibrate the data.

We will be using the Pix4Dmapper (Pix4D, Prilly, Switzerland) software throughout this document as an example to explain the post-processing steps.

## Step-by-Step Process

1. Open the Pix4Dmapper software, and click **New Project**.
2. After the New Project window opens, type in the name of the project, select the location you want to save it to, and click **Next** (Figure 1). These projects take a lot of disk space, usually around 3 GB per 50 acres, so make sure you have enough space in the intended location. It is recommended to use an external SSD (solid-state drive) or a cloud storage location since they have a large storage space (typically more than 256 GB). An external SSD also has the advantage of faster processing.

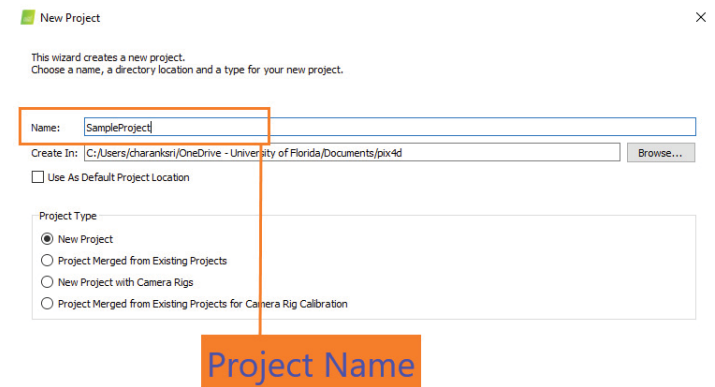


Figure 1. Screenshot of Pix4Dmapper's **New Project** window showing the name of the project and the project location.

Credits: UF/IFAS

3. In the New Project window, you will have options to add: images, where you can select all the images you need for a project; directories, where you can add folders containing the collected data; and video of the collected data. After adding the collected data, click **Next** (Figure 2).
4. The software will automatically detect the sensor used and the coordinate system and geolocate them using the data stored in the images. Check to make sure everything is correct. Once everything looks good, click **Next** (Figure 3).
5. In this step, you will have to pick the type of map you want to create. There are several types of processing options available, such as 3D maps, Ag Multispectral, etc. Choose a type that best suits your application. As an example, we will be using **Ag Multispectral** in this document. After you select the processing option, make

sure you uncheck the **Start Processing Now** option. Then, click **Finish** (Figure 4).

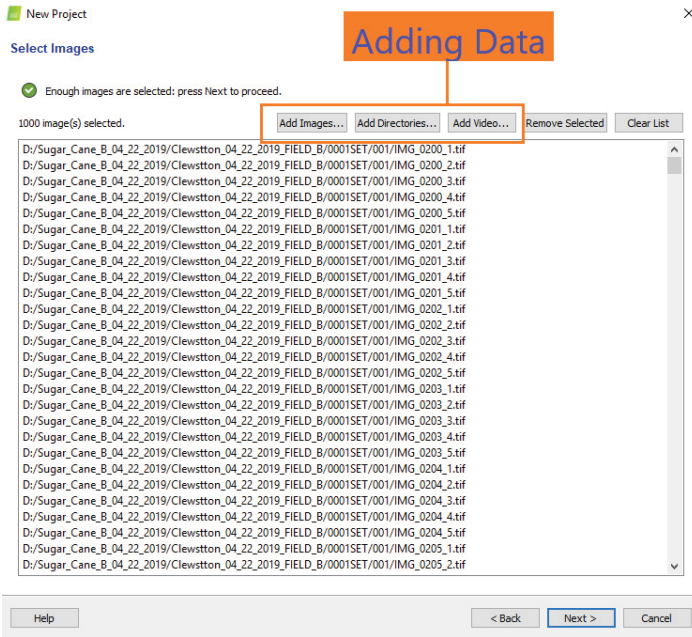


Figure 2. Screenshot of Pix4Dmapper's **Add Data** window showing the images selected and different types of data that can be added. Credits: UF/IFAS

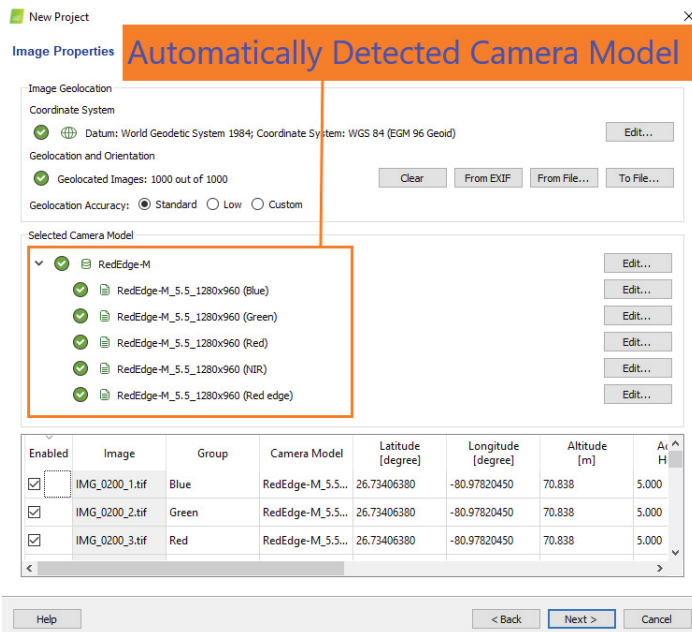


Figure 3. Screenshot of Pix4Dmapper's **Image Properties** window showing the images selected with their location data, the coordinate system, and the detected camera model. Credits: UF/IFAS

6. After processing, all your data will be arranged in a layer over a base of satellite imagery. Now, you can select individual images to check the file names and view them (Figure 5).

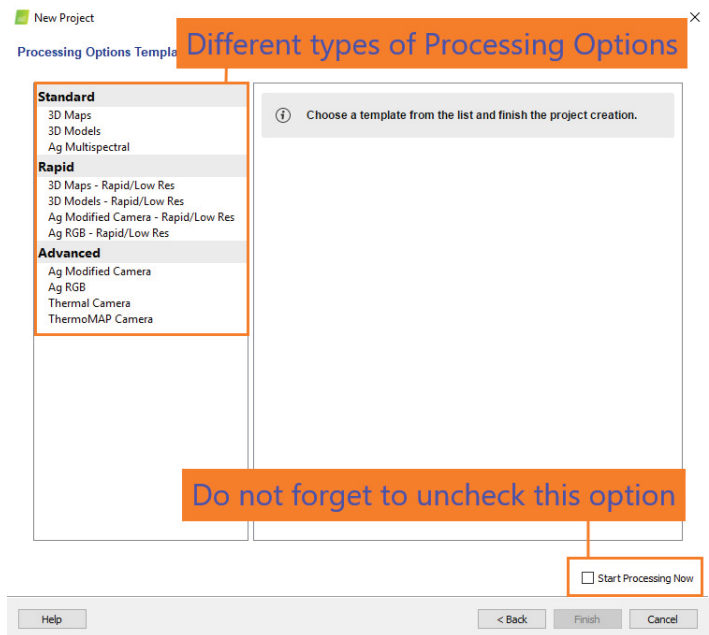


Figure 4. Screenshot of Pix4Dmapper's **Processing Options Template** window showing the different types of processing options and the **Start Processing Now** option. Credits: UF/IFAS

7. On the bottom left, click **Processing Options**, which opens a new window where you can find several processing settings (Figure 5—“Processing Options Menu” and Figure 6—“Calibration Settings”).



Figure 5. Screenshot of Pix4Dmapper window showing the collected data, processing options menu, status bar, and start button. Credits: UF/IFAS

8. In the **Initial Processing** tab, you will find options for **Keypoints Image Scale** and **Quality Report**. It is recommended to leave **Keypoints Image Scale** at its default setting. If you choose to get the quality report, keep it checked.



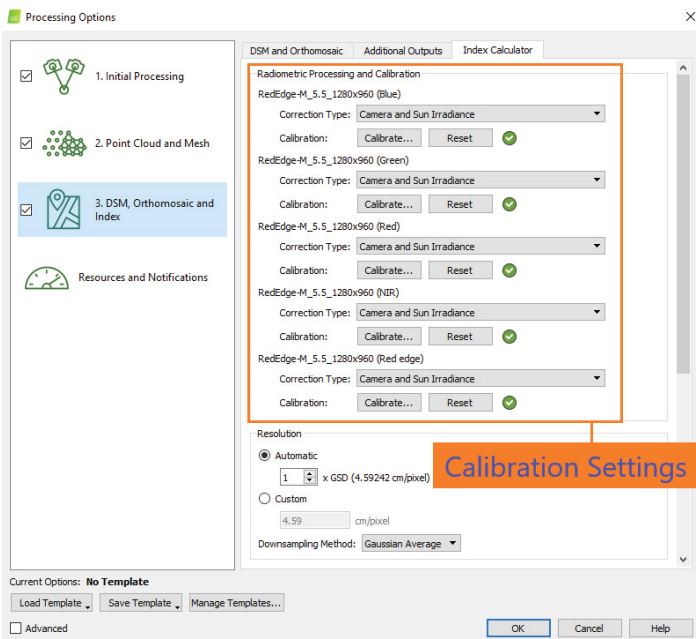


Figure 6. Screenshot of Pix4Dmapper window showing the calibration settings where the calibration details can be entered.

Credits: UF/IFAS

9. In the **Point Cloud and Mesh** tab, you will find options for different point cloud settings. Leaving them at their default setting is recommended if you are a beginner user. You can also select the type of outputs to be generated in the **Export** section for the desired point cloud output.

10. In the **DSM, Orthomosaic and Index** tab, you can find settings for **Resolution, DSM Filters, Raster DSM, and Orthomosaic**. It is recommended to leave them at their default setting unless you have a specific setting you want to choose. You will also find options to select the type of outputs you need under **Additional Outputs**. You can choose the types of outputs you need by checking them (Figure 6).

11. In the **Index Calculator** tab, you will find the **Radiometric Processing and Calibration** section. This is where you enter all your calibration data when required (Figure 6). For each individual band, you select the corresponding image taken before the mission and enter the corresponding reflectance factor. To do this, click **Calibrate**. When a new window opens, browse and select the corresponding image. Once it is loaded, draw the calibration area (highlighted in blue) using the cursor and enter the corresponding **Reflectance Factor** (Figure 7).

12. Once you have completed all of the above steps, you can click Start (Figure 5; “Start button”).

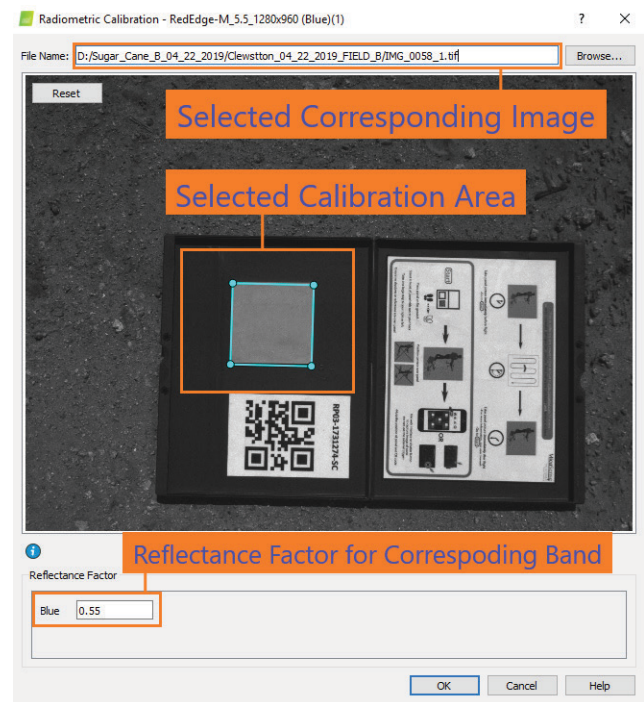


Figure 7. Screenshot of Pix4Dmapper calibration window showing the corresponding image for the particular band selected, calibration area drawn using the cursor, and reflectance factor entered for the particular band.

Credits: UF/IFAS

13. After the processing ends, you will find the results in the **rayCloud** tab. There are options for displaying several layers. You can choose which layers to display (Figure 8).

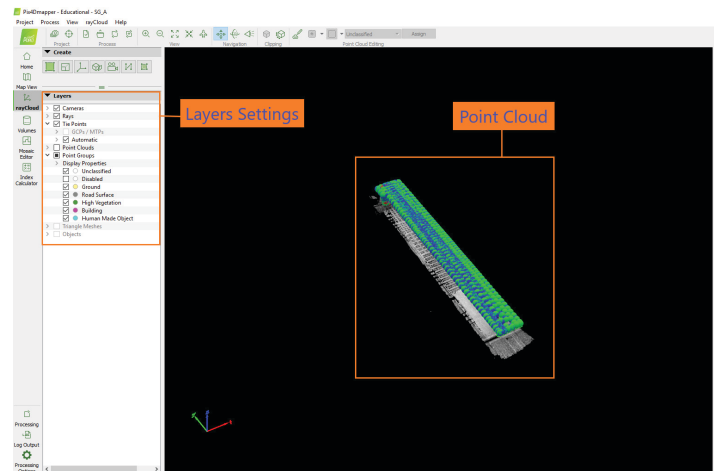


Figure 8. Screenshot of Pix4Dmapper **rayCloud** tab showing the point cloud result and various layers settings.

Credits: UF/IFAS

14. Under the **Mosaic Editor** tab, you can find the orthomosaic created (Figure 9). There is an option at the top of the window to select the type of orthomosaic to be displayed under **Edit Mosaic**.

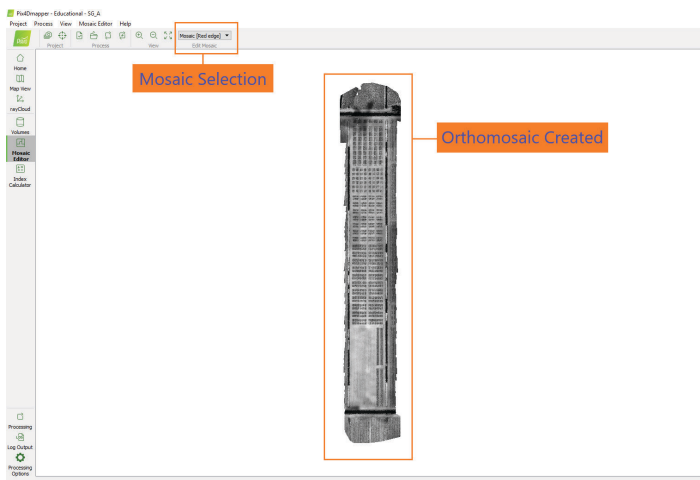


Figure 9. Screenshot of Pix4Dmapper **Mosaic Editor** tab showing the orthomosaic result and various types of mosaic selections available in the dropdown menu.

Credits: UF/IFAS

15. In the **Index Calculator** tab, you can find the reflectance maps created. There is an option in the upper right to select the type of reflectance map to be displayed under the **Reflectance Map** section.

16. On the right side of the **Index Calculator** tab, you can find the index calculator with several sections, namely Reflectance Map, Regions, Index Map, Color Maps, and Prescription and Export.

17. Under the **Reflectance Map** section, you will find the reflectance values for each band and various details about each band, such as minimum, maximum, average, standard deviation, and variance values.

18. Under the **Regions** section, you can create specific regions by adding a region name and drawing the region area with the cursor, then get the indices or reflectance values for those particular regions. To add a region, click Regions, click Add, enter a name for the region, click OK, then click Draw and draw the region using the cursor (Figure 11).

19. Under the **Index Map** section, you can create your custom index using available bands and generate maps for the custom index (Figure 10). To add a custom index, click Indices, click Add, enter the formula for the custom index, enter a name for the index, click OK, select the custom index from the dropdown menu, and click Generate to get the map with the custom index.

20. Under the **Export** section, you can find options to export the processed data in several formats such as GeoTIFF and JPEG (Figure 11).

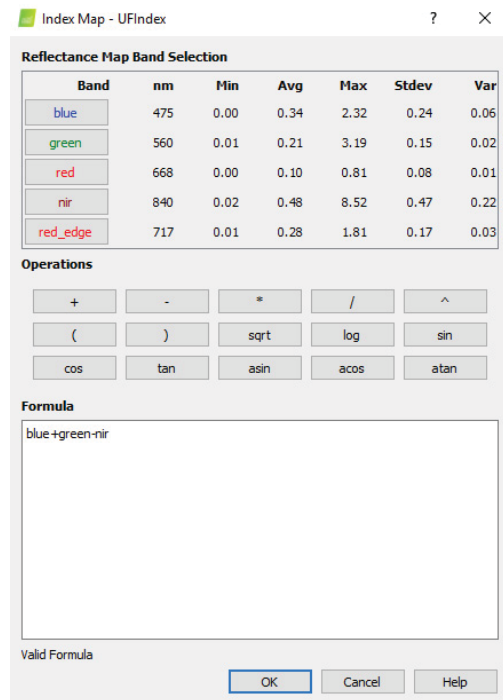


Figure 10. Screenshot of Pix4Dmapper **Index Map** custom index window showing the method to enter the formula for a custom index.

Credits: UF/IFAS

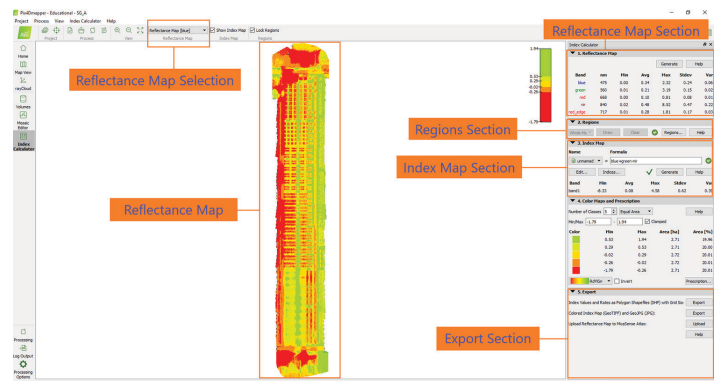


Figure 11. Screenshot of the Pix4Dmapper **Index Calculator** tab showing the Reflectance map result and various types of Reflectance Map selections available in the dropdown menu. It also shows different sections on the right side of the image.

Credits: UF/IFAS

## Conclusion

There are several post-processing software available to visualize data collected from a UAV flight. The users have to decide which option or software works best for their application(s) and use that particular option to generate results. Users can also create custom indices and custom areas using various options in the post-processing software. Calibration of the data is an important step that must be followed for accurate results. There are also options to generate different types of outputs or maps. The user has to decide which output map is needed and select only that map to minimize the data processing time. This document covers general steps that must be followed for the

post-processing of data collected from a UAV flight using Pix4Dmapper. The Pix4Dmapper was discussed as the most commonly used software (as of this writing). The authors do not endorse any particular software.

## References

Ampatzidis, Y., and V. Partel. 2019. “UAV-based high throughput phenotyping in citrus.” *Remote Sens.*: 410.

Ampatzidis, Y., V. Partel, B. Meyering, and U. Albrecht. 2019. “Citrus rootstock evaluation utilizing UAV-based remote sensing and artificial intelligence.” *Comput. Electron. Agric.*: 164, 104900.

Candiago, S., F. Remondino, M. De Giglio, M. Dubbini, and M. Gattelli. 2015. “Evaluating multispectral images and vegetation indices for precision farming applications from UAV images.” *Remote Sens.*: 4026–4047.

Díaz-Varela, R. A., R. De la Rosa, L. León, and P. J. Zarco-Tejada. 2015. “High-resolution airborne UAV imagery to assess olive tree crown parameters using 3D photo reconstruction: Application in breeding trials.” *Remote Sens.* 7: 4213–4232.

Feng, Q., J. Liu, and J. Gong. 2015. “UAV remote sensing for urban vegetation mapping using random forest and texture analysis.” *Remote Sens.* 7: 1074–1094.

Garcia-Ruiz, F., S. Sankaran, J. M. Maja, W. S. Lee, J. Rasmussen, and R. Ehsani. 2013. “Comparison of two aerial imaging platforms for identification of Huanglongbing-infected citrus trees.” *Comput. Electron. Agric.*: 106–115.

Guan, S., K. Fukami, H. Matsunaka, M. Okami, R. Tanaka, H. Nakano, T. Sakai, K. Nakano, H. Ohdan, and K. Takahashi. 2019. “Assessing correlation of high-resolution NDVI with fertilizer application level and yield of rice and wheat crops using small UAVs.” *Remote Sens.* 11: 112.

Matese, A., F. Capraro, J. Primicerio, G. Gualato, S. F. Di Gennaro, and G. Agati. 2013. “Mapping of vine vigor by UAV.” *Precis. Agric.*: 201–208.

Matese, A., P. Toscano, S. F. Di Gennaro, L. Genesio, F. P. Vaccari, J. Primicerio, C. Belli, and A. Zaldei. 2015. “Inter-comparison of UAV, aircraft and satellite remote sensing platforms for precision.” *Remote Sens.*: 2971–2990.