

# Key Plant, Key Pests: Southern Yew (*Podocarpus macrophyllus*)<sup>1</sup>

Brandon White, Chris Marble, Caroline R. Warwick, and Juanita Popenoe<sup>2</sup>

## Key Plant: Southern Yew (*Podocarpus macrophyllus*)

Southern yew or podocarpus (*Podocarpus macrophyllus*) is a popular hedge used indoors and in landscapes, highway medians, shade hedges, and parking lot islands. Podocarpus' dense foliage, evergreen color, and ease of growing in suboptimal soils make it an ideal plant for homeowners and commercial landowners alike. Though urban-tolerant, this hardy plant can quickly become a tree if left untrimmed, reaching heights of 30 to 40 feet (Figures 1 and 2). Native to southern China and Japan, this species can be found in USDA Hardiness Zones 8B–11 and is a slow-growing perennial (Gilman et al., 2019).

This publication provides information and general management recommendations to growers and homeowners for dieback, fusarium wilt, root nodules, root rot, aphids, eriophyid mites, and scale. For a more comprehensive guide of woody ornamental insect management, download “[Professional Disease Management Guide for Ornamental Plants](#)” or the “[Integrated Pest Management in the Commercial Ornamental Nursery](#)” guide. Additional information on pest management can be found in the [2017 Southeast Pest Control Guide for Nursery Crops and Landscape Plantings](#).



Figure 1. A mature podocarpus hedge.  
Credits: Brandon White, UF/IFAS

1. This document is ENH1373, one of a series of the UF/IFAS Environmental Horticulture Department. Original publication date October 2023. Visit the EDIS website at <https://edis.ifas.ufl.edu> for the currently supported version of this publication.
2. Brandon White, Extension agent I, multi-county, Commercial Crop Production and Food Systems, UF/IFAS Extension Lake County; Chris Marble, associate professor, ornamental and landscape weed management, Department of Environmental Horticulture, UF/IFAS Mid-Florida Research and Education Center; Caroline R. Warwick, science communication specialist, MFREC; and Juanita Popenoe, emeritus multicounty commercial fruit production agent IV, UF/IFAS Extension Lake County; UF/IFAS Extension, Gainesville, FL 32611..

The Institute of Food and Agricultural Sciences (IFAS) is an Equal Opportunity Institution authorized to provide research, educational information and other services only to individuals and institutions that function with non-discrimination with respect to race, creed, color, religion, age, disability, sex, sexual orientation, marital status, national origin, political opinions or affiliations. For more information on obtaining other UF/IFAS Extension publications, contact your county's UF/IFAS Extension office. U.S. Department of Agriculture, UF/IFAS Extension Service, University of Florida, IFAS, Florida A & M University Cooperative Extension Program, and Boards of County Commissioners Cooperating. Andra Johnson, dean for UF/IFAS Extension.



Figure 2. A close-up of podocarpus leaves.  
Credits: Brandon White, UF/IFAS

## Key Infections and Their Potential Pests

### Dieback (*Botryodiplodia*, *Botryosphaeria*, *Phoma*, and *Phomopsis* spp.)

#### RECOGNITION

In the nursery, liners will progressively wilt to death as the pathogen girdles the stem. Terminals and side shoots die after a growth flush on larger plants, and the dieback may continue to the soil line. The symptoms may be confused with root rot, however, small, round, brown to black fruiting structures can be seen with a hand lens on the dead tissue at the point of invasion with dieback (Figure 3).

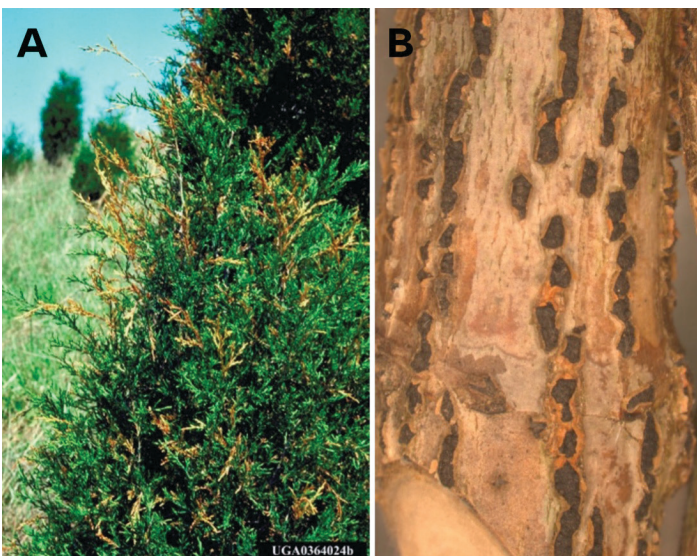


Figure 3. (A) Tip dieback from *Phomopsis* on red cedar. Notice the dispersed tip death throughout the plant. (B) A close-up of small, round, brown-to-black fruiting structures on Japanese maple.  
Credits: (A) Robert L. Anderson, United States Department of Agriculture Forest Service, Bugwood.org; (B) Nicholas Brazee, UMass Extension

## CONTRIBUTING FACTORS

Spores are spread through splashing water droplets. Frequent rainfall or irrigation triggers the release of spores from invaded bark or sapwood. Injury caused by shearing, sunscald, and cold-damaged, new growth increases chances of dieback infection.

## MANAGEMENT RECOMMENDATIONS

Do not use diseased plants for propagation. You can prune out affected wood down to green wood on mature plants. Collect and dispose of the affected removed wood. If only one liner in a pot of several dies back, pruning out the dead wood is still needed to maintain the quality of the survivors. There are no effective fungicide treatments.

### Fusarium Wilt (*Fusarium oxysporum*)

#### RECOGNITION

Lower leaves develop a grayish-green cast and then turn brown. This may affect only one liner in a group or one side of a larger plant (Figure 4). A discoloration of the wood under the bark for several inches at or above the soil line can be seen. Root systems are discolored and deteriorated (Roberts et al., 2019).



Figure 4. Fusarium wilt on a mature *Podocarpus macrophyllus*.  
Credits: Juanita Popenoe, UF/IFAS

## CONTRIBUTING FACTORS

Symptoms are worse in the summer when plant water demand is high. Fusarium is a soilborne pathogen that invades feeder roots. It is more likely to be a problem in field production but can also be found in container



production when infested media or containers are reused without sterilization by heat or chemical fumigation.

## MANAGEMENT RECOMMENDATIONS

Fungicides are not effective. At first diagnosis, move unaffected plants out of that area and do not put rooted liners on non-sterile soil that may contain the pathogen. Do not harvest seeds or cuttings from diseased plant material because the fungus may be present throughout the vascular system of the plant.

### Root Rots (*Phytophthora*, *Pythium* spp.; *Rhizoctonia solani*)

#### RECOGNITION

The first noticeable symptoms are discoloration and, thereafter, the death of lower leaves as the root system decays and the plant dies from the bottom up. These symptoms may be one-sided on the plant. Dead leaves remain on the plant, and a brownish-black discoloration can be seen in the sapwood. Wet rots cause a soft decay of the outer layers of roots, which can be easily stripped off between two fingers, leaving the firm, white stele intact (Figure 6).



Figure 5. Root rot on podocarpus root.  
Credits: Juanita Popenoe, UF/IFAS

#### CONTRIBUTING FACTORS

The disease is triggered by periods of excessive soil moisture and warm to hot temperatures. Conditions that favor disease development include planting too deep, poor drainage, shallow rooting, and poor water management.

## MANAGEMENT RECOMMENDATIONS

Manage plants to keep them out of surface water by putting them on raised beds, ground cloth, or in well-drained soil. Reduce irrigation during rain periods. Fungicides can be used preventatively at potting, but are not much use after symptoms are noticed, because the root system will be significantly rotted before leaf symptoms are seen. Check

roots of nursery-grown plants before planting them into the landscape. Provide adequate drainage and reduce irrigation.

### Aphids (Most Common: *Podocarpus*)

#### RECOGNITION

Often the first symptoms noticed of podocarpus aphids are the stunting and curling of the new terminal growth and the sooty mold. The podocarpus aphid adults are  $\frac{1}{16}$  of an inch long and dark reddish purple. The cornicles are very small and broader than long. Other aphids may lead to sooty mold but do not cause leaf distortion (Figures 6 and 7).

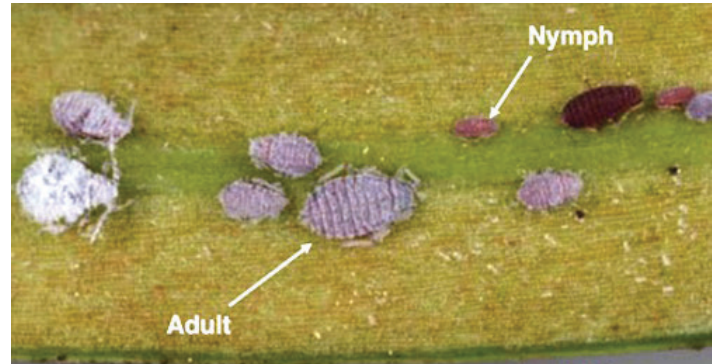


Figure 6. Podocarpus aphid (*Neophyllaphis podocarpi* Takahashi) adults and nymphs.

Credits: Lyle J. Buss, UF/IFAS



Figure 7. Aphid damage on podocarpus leaves.  
Credits: Juanita Popenoe, UF/IFAS

#### CONTRIBUTING FACTORS

Aphid populations are at their largest in the spring when they feed on the new flush of growth and predator populations are low. High nitrogen levels lead to rapid flushes of new growth that are attractive to aphids.

## MANAGEMENT RECOMMENDATIONS

Predators such as several species of lady beetles, lacewing larvae, and syrphid fly larvae will help to control

populations. Insecticidal soaps and oils provide effective control and are less toxic than conventional insecticides.

## Eriophyid Mite (*Paracalacarus podocarpi*) RECOGNITION

The mite (Figure 9) feeds on the terminal growth and causes stunting of new leaves; it also causes dark brown scarring of the terminal twigs and midrib of maturing leaves. The mite is light yellow and about the size of the citrus rust mite, although it is not related.

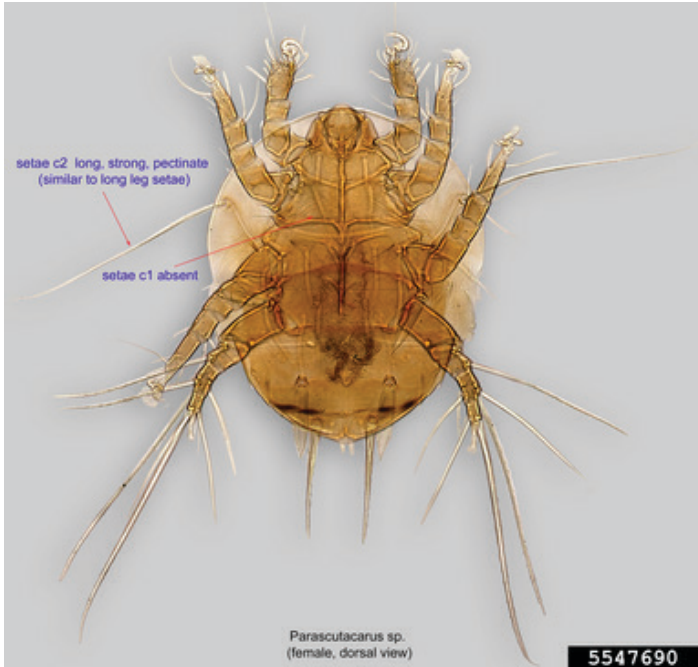


Figure 8. *Parascutacarus* spp. mite, also referred to as a bee mite.  
Credits: Pavel Klimov, Bee Mite ID, USDA APHIS PPQ, Bugwood.org

### CONTRIBUTING FACTORS

This mite has been found only in Florida and is specific to podocarpus.

### MANAGEMENT RECOMMENDATIONS

Prune out and destroy affected growth.

## Scale (Most Common: Asiatic Red, Cottony Cushion, and Indian Wax)

### RECOGNITION

Scale insects may be found on stems or leaves. Soft scales support the growth of sooty mold on the leaves beneath and may first be noticed because of the sooty mold (Figure 9). Scale feeding damage may result in chlorotic spots on the leaves and possible leaf drop. Eight species of scale are hosted on *Podocarpus macrophyllus* with Asiatic red, cottony cushion, and Indian wax being the most common.

You may find the UF/IFAS publication “A [Guide to Scale Insect Identification](#)” useful in identifying specific species of scale.



Figure 9. Several life stages of the cottony cushion scales (*Icerya purchasi* Maskell) on a twig.  
Credits: Paul N. Choate, UF/IFAS

### CONTRIBUTING FACTORS

Most scale may be present year-round. Crawlers hatch in spring and should be monitored throughout the warm season.

### MANAGEMENT RECOMMENDATIONS

If scale populations build to objectionable levels, oils or other approved insecticides may be used. The crawlers are the easiest stage to control.

## Commonly Mistaken for Pests Root Nodules (Mycorrhizal association) RECOGNITION

“Beaded root,” as it is often called, is not a disease or nematode but a beneficial mycorrhizal association (Figure 10). However, the nodules that line the roots may easily be confused with a nematode problem.



Figure 10. Root nodules or “beaded root” on *Podocarpus macrophyllus*.  
Credits: Juanita Popenoe, UF/IFAS

## CONTRIBUTING FACTORS

Mycorrhizae in soil.

## MANAGEMENT RECOMMENDATIONS

None required.

## References

Futch, S. H., C. W. McCoy, and C. C. Childers. 2018. *A Guide to Scale Insect Identification*. HS-817. Gainesville: University of Florida Institute of Food and Agricultural Sciences. <https://edis.ifas.ufl.edu/publication/CH195>

Gilman, E. F., D. G. Watson, R. W. Klein, A. K. Koeser, D. R. Hilbert, and D. C. McLean. 2019. Podocarpus macrophyllus: *Podocarpus*. ENH654. University of Florida Institute of Food and Agricultural Sciences. <https://edis.ifas.ufl.edu/publication/ST495>

Roberts, P. D., N. Dufault, R. Hochmuth, G. Vallad, and M. Paret. 2019. *Fusarium wilt* (*Fusarium oxysporum* F. SP. Niveum) of Watermelon. PP352. <https://edis.ifas.ufl.edu/publication/PP352>