

Miscanthus sinensis 'Gracillimus' Gracillimus Maiden Grass¹

Edward F. Gilman, Ryan W. Klein, and Gail Hansen²

Introduction

This is one of the finest-textured maiden grass cultivars. The bases of the long, flexible leaves stand mostly erect, but the tips droop under their own weight, forming a fountain-like sculpture in the landscape. Slender leaves originate in a clump, spreading out and up like a fountain. The 5 to 6 foot tall clumps bear pink flowers in late summer and fall that can be used for drying or as a dye plant. Their pinkish or silvery 8 to 10 inch long plumes persist into the winter. Foliage is flexible and blows easily in the wind. This shrub-like grass turns to a rich gold or orange in the south in the fall; fall color in northern landscapes appears more as a tannish brown. The fall color lasts through the winter.

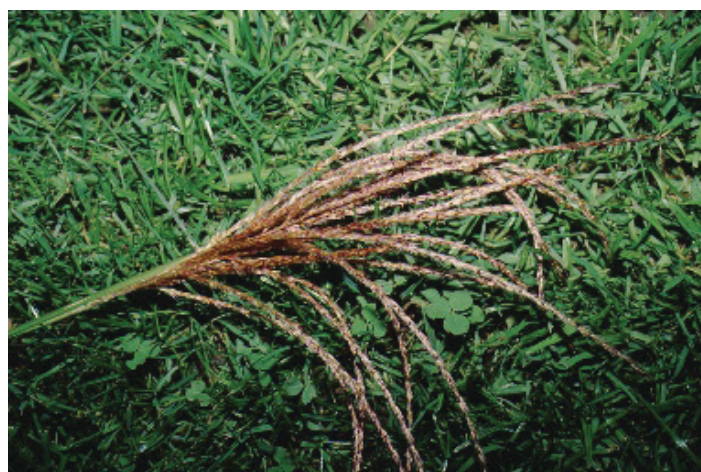


Figure 2. Flower - *Miscanthus sinensis* 'Gracillimus': Gracillimus Maiden Grass

Credits: Edward F. Gilman, UF/IFAS

General Information

Scientific name: *Miscanthus sinensis* 'Gracillimus'

Pronunciation: miss-KANTH-us sye-NEN-sis

Common name(s): 'Gracillimus' maiden grass

Family: *Poaceae*

Plant type: herbaceous; ornamental grass

USDA hardiness zones: 6 through 9 (Figure 3)



Figure 1. Full Form - *Miscanthus sinensis* 'Gracillimus': Gracillimus Maiden Grass

Credits: Edward F. Gilman, UF/IFAS

1. This document is FPS406, one of a series of the Department of Environmental Horticulture, UF/IFAS Extension. Original publication date September 1999. Revised October 2023. Visit the EDIS website at <https://edis.ifas.ufl.edu> for the currently supported version of this publication.
2. Edward F. Gilman, professor emeritus; Ryan W. Klein, assistant professor, arboriculture; and Gail Hansen, professor, sustainable landscape design; Department of Environmental Horticulture, UF/IFAS Extension, Gainesville, FL 32611.

The Institute of Food and Agricultural Sciences (IFAS) is an Equal Opportunity Institution authorized to provide research, educational information and other services only to individuals and institutions that function with non-discrimination with respect to race, creed, color, religion, age, disability, sex, sexual orientation, marital status, national origin, political opinions or affiliations. For more information on obtaining other UF/IFAS Extension publications, contact your county's UF/IFAS Extension office. U.S. Department of Agriculture, UF/IFAS Extension Service, University of Florida, IFAS, Florida A & M University Cooperative Extension Program, and Boards of County Commissioners Cooperating. Andra Johnson, dean for UF/IFAS Extension.

Planting month for zone 7: year-round

Planting month for zone 8: year-round

Planting month for zone 9: year-round

Origin: not native to North America

Invasive potential: aggressive, spreading plant

Uses: mass planting; border; container or above-ground planter; screen; accent

Availability: generally available in many areas within its hardiness range



Figure 3. Shaded area represents potential planting range.

Description

Height: 5 to 6 feet

Spread: 5 to 10 feet

Plant habit: upright

Plant density: moderate

Growth rate: fast

Texture: fine

Foliage

Leaf arrangement: alternate

Leaf type: simple

Leaf margin: serrate

Leaf shape: lanceolate

Leaf venation: parallel

Leaf type and persistence: deciduous

Leaf blade length: more than 36 inches

Leaf color: green

Fall color: brown or tan

Fall characteristic: showy

Flower

Flower color: red; white

Flower characteristic: summer flowering; fall flowering

Fruit

Fruit shape: no fruit

Fruit length: no fruit

Fruit cover: no fruit

Fruit color: no fruit

Fruit characteristic: no fruit

Trunk and Branches

Trunk/bark/branches: typically multi-trunked or clumping stems

Current year stem/twig color: not applicable

Current year stem/twig thickness: not applicable

Culture

Light requirement: plant grows in full sun

Soil tolerances: occasionally wet; acidic; sand; loam; clay; slightly alkaline

Drought tolerance: moderate

Soil salt tolerances: poor

Plant spacing: 36 to 60 inches

Other

Roots: not applicable

Winter interest: plant has winter interest due to unusual form, nice persistent fruits, showy winter trunk, or winter flowers

Outstanding plant: plant has outstanding ornamental features and could be planted more

Pest resistance: no serious pests are normally seen on the plant

Use and Management

Maiden grass is frequently used in the landscape as a specimen or screen. It is also employed in group plantings, forming a nice mass of fine-textured foliage. Use maiden grass as an accent or mass planted in a large-scale landscape, such as around a commercial building to add a touch of soft elegance and texture. The slightest breeze moves the foliage, allowing the landscape to come alive. Many people prefer to cut the grass back to the ground in the spring so that new green growth is not covered with last year's dried, brown foliage.

Maiden grass requires a location in the landscape that receives full sun, but it is adaptable to most well-drained soils. This ornamental grass is quite drought tolerant. It is a warm-season grass and transplants best in the spring. Provide good drainage at the planting site.

Other cultivars include 'Condensatus', coarser leaf texture than species, mid-summer bloom, 7 to 8 feet tall; 'Purpure-scens', reddish foliage in summer, purple-red foliage in fall, silver-pink inflorescence, mid-summer bloom, 4 to 5 feet tall; 'Silver Feather', silvery white flowers in mid-summer; 'Strictus', horizontal yellow bands on foliage, upright growth habit, 6 to 8 feet tall; 'Variegatus', white variegation on leaf margin, does relatively well in partial shade, to 7 feet tall; 'Yaku Jima', more compact, 3 to 4 feet tall; 'Zebrinus', horizontal yellow bands on foliage, wide spreading habit, to 7 feet tall.

The propagation of *Miscanthus sinensis* is by division in the spring.

Pests and Diseases

No pests or diseases are of major concern.

Rust diseases occasionally infest the foliage, but it often goes away in drier weather.