

Tropilaelaps mite *Tropilaelaps* spp. Delfinado & Baker (Arachnida: Mesostigmata: Laelapidae)¹

Ashley N. Mortensen, Sarah Burleson, Gunasegaran Chelliah, Ken Johnson, Daniel R. Schmehl, and Jamie D. Ellis²

The Featured Creatures collection provides in-depth profiles of insects, nematodes, arachnids and other organisms relevant to Florida. These profiles are intended for the use of interested laypersons with some knowledge of biology as well as academic audiences.

Introduction

Honey bees throughout the world are exposed to numerous pests, parasites, and pathogens. One such parasite is *Tropilaelaps* spp. Delfinado & Baker (Acari: Laelapidae). *Tropilaelaps* is an ectoparasitic mite that feeds on the fat bodies of developing honey bees.

Four species of *Tropilaelaps* have been identified and characterized: *Tropilaelaps clareae*, *Tropilaelaps koenigerum*, *Tropilaelaps mercedesae*, and *Tropilaelaps thaii*.

Hosts

The giant Asian honey bee, *Apis dorsata*, is *Tropilaelaps*' primary host. However *Tropilaelaps* may also be found in the colonies of other Asian honey bee species, including *Apis cerana* and *Apis florae*. The Western honey bee, *Apis mellifera* L. (http://entnemdept.ufl.edu/creatures/MISC/BEES/euro_honey_bee.htm) is not a natural host of *Tropilaelaps*. However, Western honey bees are parasitized by *Tropilaelaps* in regions where both species are present.

Unfortunately the Western honey bee lacks the behavioral defenses that Asian honey bee species have evolved to combat severe *Tropilaelaps* infestations.

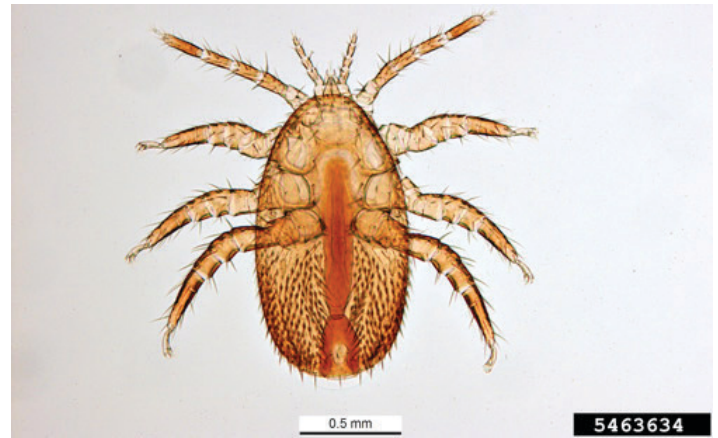


Figure 1. Adult female *Tropilaelaps*.
Credits: Pest and Diseases Image Library, Bugwood.org

Distribution

Tropilaelaps is a native pest in tropical and subtropical Asia. However, *Tropilaelaps*' distribution has been expanding over the past 50 years. *Tropilaelaps* can be found in *Apis mellifera* colonies well beyond the mite's native range. Invasive *Tropilaelaps* populations are most successful in warm environments where honey bees produce brood (developing larvae or pupae) throughout the year. For

1. This document is EENY604, one of a series of the Entomology and Nematology Department, UF/IFAS Extension. Original publication date October 2014. Revised December 2017, April 2019, and December 2022. Visit the EDIS website at <https://edis.ifas.ufl.edu> for the currently supported version of this publication. This document is also available on the Featured Creatures website at <https://entnemdept.ufl.edu/creatures/>.
2. Ashley N. Mortensen, biological scientist; Sarah Burleson; Gunasegaran Chelliah; Ken Johnson; Daniel R. Schmehl; and Jamie D. Ellis, Entomology and Nematology Department; UF/IFAS Extension, Gainesville, FL 32611.

The Institute of Food and Agricultural Sciences (IFAS) is an Equal Opportunity Institution authorized to provide research, educational information and other services only to individuals and institutions that function with non-discrimination with respect to race, creed, color, religion, age, disability, sex, sexual orientation, marital status, national origin, political opinions or affiliations. For more information on obtaining other UF/IFAS Extension publications, contact your county's UF/IFAS Extension office. U.S. Department of Agriculture, UF/IFAS Extension Service, University of Florida, IFAS, Florida A & M University Cooperative Extension Program, and Boards of County Commissioners Cooperating. Andra Johnson, dean for UF/IFAS Extension.

instance, *Tropilaelaps* have been reported in Kenya and Papua New Guinea.

Description

Eggs

A physical description of *Tropilaelaps* eggs is not available.

Nymphs

In general, *Tropilaelaps* nymphs are not pigmented and are smaller than adults. Nymphs have three pairs of legs, and the first pair is longer than the second and third pairs.

Adults

Tropilaelaps adults are elongated with a heavily sclerotized exoskeleton. The bodies of both sexes are covered with numerous, short, spine-like hairs and are generally a reddish brown color (Figure 1). *Tropilaelaps* females are approximately 0.7–1.0 mm long and 0.5–0.6 mm in width, while males are significantly smaller. Adult mites have four pairs of legs. Morphologically *Tropilaelaps* differ from another parasitic mite, *Varroa* spp. Oudemans (http://entnemdept.ufl.edu/creatures/misc/bees/varroa_mite.htm) in both size and shape. *Tropilaelaps* are smaller and have narrow/long bodies whereas *Varroa* are larger in size and are wider than long (Figure 2).

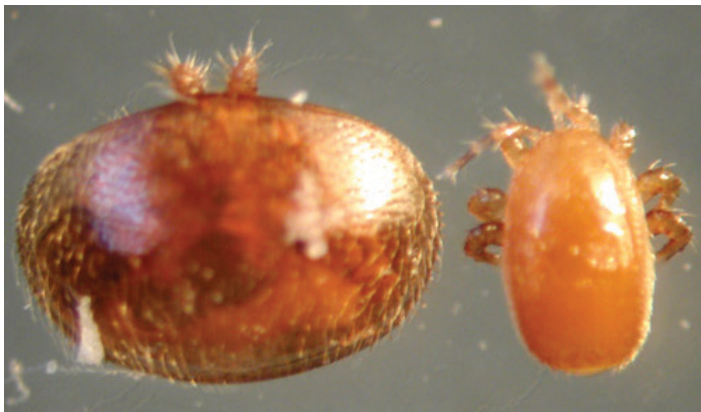


Figure 2. *Varroa* on the left, compared with *Tropilaelaps* on the right. Credits: Zachary Huang, www.beetography.com

Life Cycle

Much of the *Tropilaelaps* life cycle takes place beneath the wax capping of a honey bee brood cell. Therefore, several aspects of their reproduction are unknown. A mated female *Tropilaelaps* that is ready to produce offspring (foundress mite) enters a honey bee brood cell just before it is capped, while the honey bee is still a larva. Each foundress lays approximately three to four eggs within the cell after the cell is capped. Twelve hours later, *Tropilaelaps* nymphs hatch and feed on the developing honey bee larva/pupa. *Tropilaelaps*

infect both worker and drone brood, and develop from egg to adult within a week. Adult mites emerge from the brood cell when the adult honey bee emerges. At this point, the females search for additional honey bee larvae to infect.

It generally is believed that adult *Tropilaelaps* mate in the capped honey bee brood cell before emerging (similar to *Varroa*). However, some believe that adult mites may mate once they have emerged from the honey bee brood cell.

Tropilaelaps have small mouth parts that are unable to pierce the integument (skin) of adult honey bees. Therefore, both nymph and adult *Tropilaelaps* must feed on the hemolymph of the honey bee brood. After emerging from the honey bee brood cell, adult *Tropilaelaps* must reenter another brood cell to feed on a developing bee or the mite will die within two days. *Tropilaelaps* have a short reproductive cycle and possess the potential for rapid population growth. Furthermore, their rapid reproduction enables *Tropilaelaps* to outcompete *Varroa* in honey bee colonies infected by both mites.

Tropilaelaps are transported inside and outside of the honey bee colony by the adult honey bees. Phoretic mites (mites attached to an adult honey bee) can be transported throughout the colony's brood combs or into another colony when adult bees drift into another colony, rob resources from other colonies, or swarm (<https://edis.ifas.ufl.edu/in970>). Beekeeping management techniques, such as movement of infested combs and/or bees between colonies, can spread *Tropilaelaps*.

Detection

Tropilaelaps infestation is evident from visible colony symptoms, such as irregular brood patterns, perforated brood cell cappings, and newly emerged bees with misshaped abdomens, irregular wings, and distorted or missing legs. In severe cases, *Tropilaelaps* infestations may cause the colony to abscond (the honey bee colony abandons the brood and hive) or even die.

Several methods exist for detecting *Tropilaelaps* infestation. One rapid, easy, and effective technique is the “bump” method. To collect mites using the bump method you: 1) remove a frame of capped brood from the colony, 2) shake adult bees off the surface of the comb, 3) firmly bump (hit) one side of the frame over a white surface, 4) turn the frame over and bump again, 5) repeat steps 3 and 4 so that you conduct a total of four bumps (2 bumps each side), 6) then quantify the *Tropilaelaps* present on the white surface. It is important to remember that *Tropilaelaps* are small and fast

moving. It is recommended that a white pan be used as the white surface, this will help contain the dislodged mites.

Economic Importance

Due to a high reproductive rate and quick development time, populations of *Tropilaelaps* can grow rapidly. This rapid build-up makes this parasite difficult to manage. *Tropilaelaps* can cause significant mortality of the honey bee brood. In severe cases, up to 50% of a honey bee colony's brood may be killed by *Tropilaelaps*, and colonies may have so much dead brood that the smell of decaying remains is apparent. Brood patterns may be irregular and may contain areas of neglected brood along with cell cappings that have been perforated. *Tropilaelaps* parasitism during the larval and pupal stages often results in reduced lifespans of adult bees. In addition to shorter lifespans, these parasitized honey bees may have lower body weights as well as shrunk or deformed wings and legs.

Tropilaelaps is considered a potential threat to the honey bee industry throughout the world because this mite has the potential to thrive in any tropical/subtropical region that hosts honey bees. In countries like the United States and Australia, *Tropilaelaps* could cause colony losses and reduce the viability of the commercial beekeeping industry.

Management

Widely recommended beekeeping management strategies for *Tropilaelaps* include regular requeening with hygienic queenlines and use of modified bottom boards. Cultural control methods involving caging queens have been successful in treating *Tropilaelaps* infestations. A colony's *Tropilaelaps* population can be reduced greatly if a colony is made broodless for a sufficient period of time by caging the queen for nine days and removing the mature capped brood. It is likely that many of the miticides used against *Varroa* in the US are efficacious against *Tropilaelaps*.

Strict monitoring programs have been established throughout the world to prevent further spread of *Tropilaelaps* beyond its native range. Any transportation of honey bees from an area infested with *Tropilaelaps* to a region that does not have *Tropilaelaps* should be done using packages (adult bees only—no comb) rather than established colonies (Figure 3). These packages should be stored away from any honey bee colonies for a minimum of two days. Following a two day hold, any *Tropilaelaps* that may have been transported within the package will be dead because there is no brood in a package to support mite feeding.



Figure 3. A package of honey bees. Note that no wax comb or brood is present within a package of bees. Only adult honey bees and one queen are contained within a package. Any phoretic *Tropilaelaps* will die within two days. This is the recommended practice for transporting honey bees from an area infested with *Tropilaelaps* to a region that does not have *Tropilaelaps*.

Credits: Brandi Simmons, UF/IFAS

Selected References

- Anderson DL, Roberts JMK. 2013. Standard methods for *Tropilaelaps* mites research. In Volume II: Standard Methods for *Apis mellifera* Pest and Pathogen Research, The Coloss BeeBook, Eds. Dietemann V, Ellis JD, Neumann P. *Journal of Apicultural Research* 52. <https://doi.org/10.3896/IBRA.1.52.4.21>
- Burgett M, Akwatanakul P, Morse RA. 1983. "*Tropilaelaps clareae*: a parasite of honeybees in south-east Asia." *Bee World* 64: 25–28.
- DeBerry S, Crowley J, Ellis JD. 2012. *Swarm Control for Managed Beehives*. ENY-160. Gainesville: University of Florida Institute of Food and Agricultural Sciences. <https://edis.ifas.ufl.edu/in970> (April 2019).
- Delfinado MD, Baker EW. 1961. "*Tropilaelaps*, a new genus of mite from the Philippines (Laelapidae: Acarina)." *Fieldiana-Zoology* 44: 53–56.
- Delfinado-Baker M, Baker EW. 1982. "A new species of *Tropilaelaps* parasitic on honeybees." *American Bee Journal* 112: 416–417.
- Ellis JD, Munn PA. 2005. "The worldwide health status of honey bees." *Bee World* 86(4): 88–101.
- Ellis JD, Zettel Nalen CM. 2013. *Varroa destructor Anderson and Trueman (Arachnida: Acari: Varroidae)*. EENY-473. Gainesville: University of Florida Institute of Food and Agricultural Sciences. <https://edis.ifas.ufl.edu/in855> (April 2019).

Mahmood R, Mohsin AU, Asad S, Raja S, Sarwar G. 2014. "Integrated control of *Tropilaelaps clareae* and *Varroa destructor* in *Apis mellifera*, L. colonies." *Journal of Agricultural Science* 4: 32–37.

Matheson A. 1997. Country records for honeybee diseases, parasites and pests. Appendix 11. In: Honeybee Pests, Predators and Diseases, 3rd edition, Eds. Morse RM, Flottum PK. Medina, OH: A. I. Root.

Mortensen AN, Schmehl DR, Ellis JD. 2013. *European Honey Bee Apis mellifera Linnaeus and subspecies (Insecta: Hymenoptera: Apidae)*. EENY568. Gainesville: University of Florida Institute of Food and Agricultural Sciences. <https://edis.ifas.ufl.edu/in1005> (April 2019).

Pettis JS, Rose R, Lichtenberg EM, Chantawannakul P, Buawangpong N, Somana W, Sukumalanand P, Vanengelsdorp D. 2013. "A rapid survey technique for *Tropilaelaps* mite (Mesostigmata: Laelapidae) detection." *Journal of Economic Entomology* 106: 1535–1544. doi: <https://doi.org/10.1603/EC12339>

Ritter W. 2014. *Tropilaelaps* infestation of honey bees (*Tropilaelaps* spp.) In: Manual of Diagnostic Tests and Vaccines for Terrestrial Animals. World Organization for Animal Health, Paris, France.

Tangkanasing P, Wongsiri S, Vongsamanode S. 1988. Integrated control of *Varroa jacobsoni* and *Tropilaelaps clareae* in bee hives in Thailand. In: Africanized Honey Bees and Bee Mites. Eds. Needham GR, Page RE, Delfinado-Baker M, Bowman CE. Ellis Horwood Ltd, Chichester, West Sussex, England, pp 409–441.

Woo KS, and Lee JH. 1997. "Current status of honeybee mites in Korea." *Honeybee Science* 18: 175–177.

Woyke J. 1994. "Mating behavior of the parasitic honeybee mite *Tropilaelaps clareae*." *Journal of Experimental and Applied Acarology* 18: 723–733. doi: <https://doi.org/10.1007/BF00051539>. <https://link.springer.com/article/10.1007/BF00051539>.