

Wellsina Mite *Hemicheyletia wellsina* (De Leon) (Arachnida: Acari: Cheyletidae)¹

Haleigh A. Ray and Marjorie A. Hoy²

Introduction

Hemicheyletia wellsina (De Leon) (Figure 1) is a predatory mite in the family Cheyletidae. The life history of species in this family is very diverse. About 75% of cheyletid mites are predators of other arthropods and the rest are parasitic on birds and mammals (Bochkov and O'Connor 2004, Krantz and Walter 2009). *Hemicheyletia wellsina* was recently discovered in an unsprayed greenhouse at the University of Florida, Gainesville, living on *Phalaenopsis* and *Dendrobium* orchids, and assumed to be feeding on orchid pests such as spider mites, tenuipalpid mites, and mealybugs that were present on the orchids. Because there was no published information on the biology or effectiveness of this species as a natural enemy of orchid pests, colonies were initiated in the Entomology and Nematology department at the University of Florida to study the biology of *Hemicheyletia wellsina*. A better understanding of this predator's biology could have implications for hobbyist orchid growers. Colonies of *Hemicheyletia wellsina* were maintained on two-spotted spider mite *Tetranychus urticae* (Koch) prey. This predator fed on all active stages but did not feed on eggs.

Distribution

Hemicheyletia wellsina was originally described in Trinidad, and is currently distributed through Malaysia, Taiwan, the Philippines, and north and central Africa (Fain et al. 2002).

This species has been reported in many counties in southern Florida, and as far north as Alachua County, Florida.

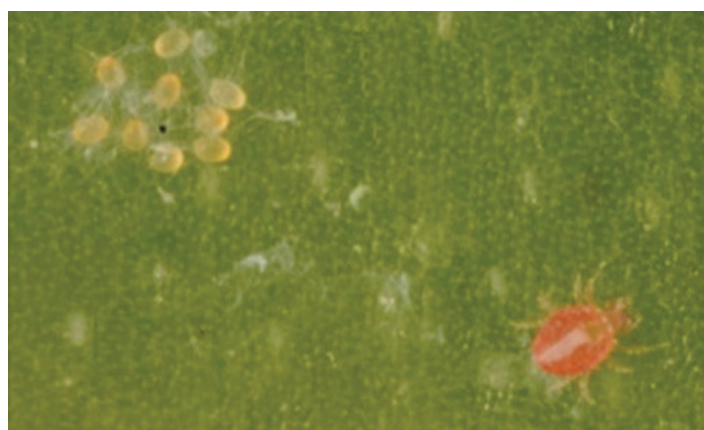


Figure 1. Adult female *Hemicheyletia wellsina* (De Leon) in the lower right corner of the photo near a clutch of her eggs in the upper left. The eggs are covered with silk produced by the female.
Credits: Haleigh Ray, UF/IFAS

Description

Hemicheyletia wellsina is a small, round mite (Figure 2). The larvae measure approximately 0.12 mm in width and 0.15 mm in length. Adults average approximately 0.25 mm in width and 0.29 mm in length, with adult females being about 20% larger than adult males. Like all cheyletids, they have short, stylet-like mouthparts called chelicerae and large pincer-like palps for grasping prey (Baker and Wharton 1952; Volgin 1987; Ray and Hoy 2014a) (Figure 2). When the larvae hatch they have six legs but, after molting,

1. This document is EENY609, one of a series of the Department of Entomology and Nematology, UF/IFAS Extension. Original publication date December 2014. Reviewed February 2018. Visit the EDIS website at <http://edis.ifas.ufl.edu>. This document is also available on the Featured Creatures website at <http://entomology.ifas.ufl.edu/creatures>.

2. Haleigh A. Ray; and Marjorie A. Hoy, Department of Entomology and Nematology; UF/IFAS Extension, Gainesville, FL 32611.

The Institute of Food and Agricultural Sciences (IFAS) is an Equal Opportunity Institution authorized to provide research, educational information and other services only to individuals and institutions that function with non-discrimination with respect to race, creed, color, religion, age, disability, sex, sexual orientation, marital status, national origin, political opinions or affiliations. For more information on obtaining other UF/IFAS Extension publications, contact your county's UF/IFAS Extension office.

U.S. Department of Agriculture, UF/IFAS Extension Service, University of Florida, IFAS, Florida A & M University Cooperative Extension Program, and Boards of County Commissioners Cooperating. Nick T. Place, dean for UF/IFAS Extension.

both nymphs and adults have eight legs. *Hemicheyletia wellsina* becomes a brighter shade of red with each molt, and sometimes adults are a deep red color (Figure 3).

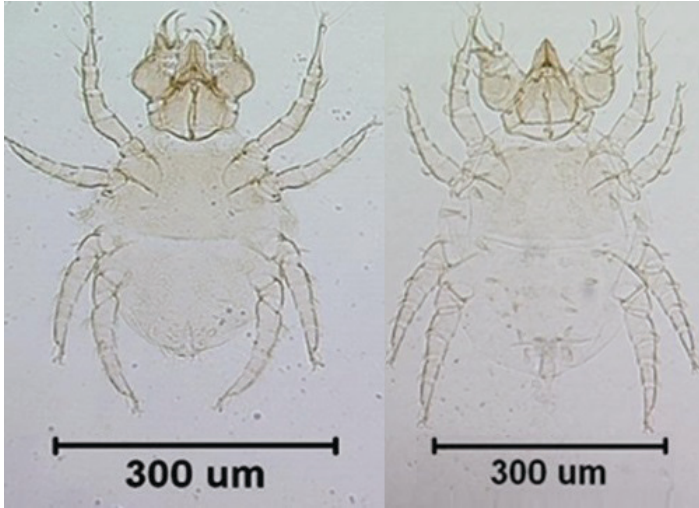


Figure 2. Slide mounted adult male (L) and female (R) *Hemicheyletia wellsina* (De Leon).

Credits: Haleigh Ray, UF/IFAS

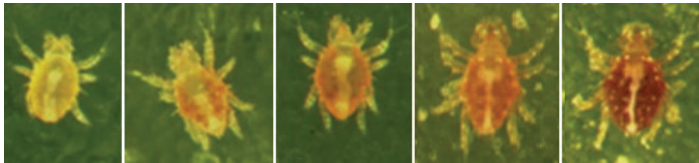


Figure 3. *Hemicheyletia wellsina* (De Leon) life stages from left to right: larva, first nymphal stage, second nymphal stage, adult male, and adult female.

Credits: Haleigh Ray, UF/IFAS

Life Cycle and Behavior

After hatching from the egg, *Hemicheyletia wellsina* has four life stages: the larvae, a first nymphal stage, a second nymphal stage, and adult males and females. In most mite species, the first and second nymphal stages are called protonymph and deutonymph, respectively. Because a third nymphal state (tritonymph) occurs in some species of this family, the nymphal stages are simply referred to as first and second here. *Hemicheyletia wellsina* lays eggs in groups, or clutches, that are covered by fine silk webbing (Figure 4). This webbing probably provides both protection from predators and helps to regulate the relative humidity that the eggs experience (Ray and Hoy 2014c). When larvae first hatch they do not survive if removed from under the silk. After about 3 days, the larvae could be moved to a clean leaf disc and survive. As soon as the *Hemicheyletia wellsina* larvae move away from the silk, they could then feed on much larger prey.

The average lifespan of *Hemicheyletia wellsina* from hatching until death is approximately 30 days, with individuals living as few as 16 days and as long as 47 days at 25°C with a relative humidity of 45–55% and a 16 h light and 8 h dark

photoperiod. The time between when the eggs are laid until they hatch is three to five days, and seven to 10 more days are required to reach adulthood. The adult females lay two to three clutches of silk-covered eggs, usually with seven to eight eggs per clutch. Each adult female deposits an average of 18.5 eggs throughout her lifetime (Ray and Hoy 2014a).



Figure 4. A clutch of *Hemicheyletia wellsina* (De Leon) eggs covered with silk produced by the mother.

Credits: Haleigh Ray, UF/IFAS

Hemicheyletia wellsina adult females were observed to feed on *Phalaenopsis* mites (*Tenuipalpus pacificus* Baker), two-spotted spider mites (*Tetranychus urticae* (Koch)), one life stage of Boisduval scale (*Diaspis boisduvalii* Signoret), and the western orchard predatory mite (*Metaseiulus occidentalis* (Nesbitt)) (Figures 5–8).



Figure 5. *Hemicheyletia wellsina* (De Leon) adult (right) feeding on *Tenuipalpus pacificus* Baker, or the *Phalaenopsis* mite (left), a serious pest of *Phalaenopsis* orchids.

Credits: Haleigh Ray, UF/IFAS

Hemicheyletia wellsina typically captures and feeds on these species by grasping the leg of the prey as it comes in contact with the palps of *Hemicheyletia wellsina*. Like many cheyletids, *Hemicheyletia wellsina* uses the ‘ambush’ method of prey capture described by Wharton and Arlian (1972). *Hemicheyletia wellsina* remains stationary on the leaf surface with its palps opened wide. When an arthropod

comes into contact with the palps, they rapidly close, trapping the prey. Within seconds the prey becomes immobile, which suggests that *Hemicheyletia wellsina* injects a toxin in to the prey as do several cheyletid species (Gerson et al. 2003). This allows them to feed on prey that is much larger, and even larval *Hemicheyletia wellsina* can feed on adults of the larger predatory phytoseiid *Metaseiulus occidentalis* (Figure 9).



Figure 6. Adult *Hemicheyletia wellsina* (De Leon) (right) feeding on an adult female of the two-spotted spider mite *Tetranychus urticae* (Koch) (left) by grasping the front leg of the spider mite.
Credits: Haleigh Ray, UF/IFAS

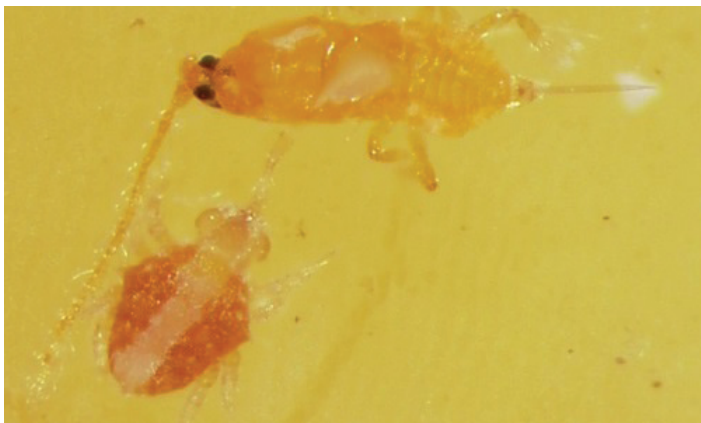


Figure 7. Adult female *Hemicheyletia wellsina* (De Leon) (bottom) feeding on an adult male of the scale insect *Diaspis boisduvalii* Signoret (top).
Credits: Haleigh Ray, UF/IFAS

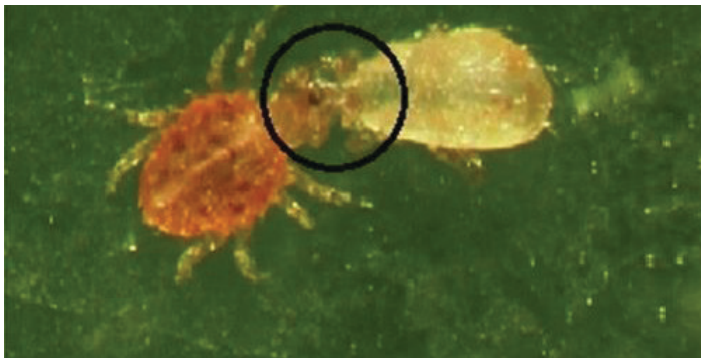


Figure 8. Adult *Hemicheyletia wellsina* (De Leon) (left) feeding on an adult female of *Metaseiulus occidentalis* (Nesbitt) (right), a larger predatory species. The circle indicates the *Hemicheyletia wellsina* has grasped the palp of this larger phytoseiid predator.
Credits: Haleigh Ray, UF/IFAS

Adult *Hemicheyletia wellsina* females were individually placed on a leaf with the adult females or larvae of the predatory mite *Metaseiulus occidentalis*. Every time the predators came in contact with each other, *Hemicheyletia wellsina* captured and fed on *Metaseiulus occidentalis* (Figure 8). However, without access to food, a newly emerged adult female *Hemicheyletia wellsina* can live for approximately 10 days without feeding (Ray and Hoy 2014a). Individuals do not require many prey to survive, with adult *Hemicheyletia wellsina* females feeding on an average of 1.5 adult spider mites per day, and an average of 27 adult spider mites throughout their lifetime.



Figure 9. Even larval *Hemicheyletia wellsina* (De Leon) (left) can attack and kill a much larger adult female of *Metaseiulus occidentalis* (Nesbitt) (right).
Credits: Haleigh Ray, UF/IFAS

Habitat

Hemicheyletia wellsina has been found on native wild plants and flowers as well as in leaf litter, flowers of coconut (*Cocos nucifera*), *Hibiscus* sp., asparagus fern (*Asparagus plumosus*), Philippine tea tree (*Ehretia microphylla*), yellow root (*Arcangelisia flava*), Philippine fishtail palm (*Caryota cumingii*), bitter vine (*Mikania micrantha*), buffalo grass (*Paspalum conjugatum*), butterfly-pea (*Clitoria ternatea*), chestnut (*Castanea crenata*), *Melaleuca leucodendron*, *Wedelia biflora*, and wild blackberry (*Rubus ulmifolius*) (Tseng 1972; Corpuz-Raros and Sotto 1977; Ehara and Ibrahim 1988; Fain et al. 2002). Although *Hemicheyletia wellsina* has been found mostly on wild plants, it was collected from *Phalaenopsis* and *Dendrobium* orchids in a greenhouse. No records indicate that *Hemicheyletia wellsina* occurs in agricultural systems.

Economic Importance

Orchids are susceptible to many types of arthropod pests. Scales, mealybugs, thrips, mites, aphids, and whiteflies are most common (Bottom 2012). Of these, the most difficult to control are mites, which require a high rate of pesticide

use on ornamental plants (Naher et al. 2005). *Hemicheyletia wellsina* can feed on two species of plant-feeding mite (*Tetranychus urticae* and *Tenuipalpus pacificus*) and one species of scale (*Diaspis boisduvalii*), but may not feed on a sufficiently large number of individuals to alone prevent damage to the orchids especially if pest densities are high. In a study by Ray and Hoy (2014b), two reduced-risk pesticides were tested on *Hemicheyletia wellsina* to determine if they could be used in addition to *Hemicheyletia wellsina* for control of orchid pests. Grandevo (Marrone Bio Innovations 2012) and a combination of Silwet L-77 and 2% horticultural oil were sprayed directly on *Hemicheyletia wellsina* adults (Mention of these products does not endorse their use). Grandevo resulted in low mortality of *Hemicheyletia wellsina*, while Silwet L-77 and horticultural oil caused a high rate of mortality to *Hemicheyletia wellsina* (Ray and Hoy 2014b).

Ideally, predators used for biological control have a high prey searching ability, prey on a specific pest species, can increase in numbers more rapidly than the targeted prey, and have the ability to adapt to new environments (Rosen and Huffaker 1983). *Hemicheyletia wellsina* does not appear likely to be an effective natural enemy in agricultural crops as an introduced predator. This predator is unlikely to be able to suppress spider mites at a sustainable level due to its low reproductive rate, longer developmental time, and low feeding rate. However, *Hemicheyletia wellsina* could be beneficial in natural biological control in natural ecosystems, where pest densities are lower. If *Hemicheyletia wellsina* is present, it could limit pests and reduce plant damage in natural ecosystems or in landscape settings, although this needs to be confirmed. *Hemicheyletia wellsina* has been observed to feed on Phalenopsis mites (*Tenuipalpus pacificus*), two-spotted spider mite (*Tetranychus urticae*), and one life stage of Boisduval scale (*Diaspis boisduvalii*).

Acknowledgements

We thank Dr. Cal Welbourn of the Division of Plant Industry, Gainesville FL and Dr. Andre Bochkov of the Department of Parasitology, Zoological Institute of the Russian Academy of Sciences for species identification. We also thank Godfrey Maina for help with colony maintenance. We thank Lyle Buss of the UF/IFAS Department of Entomology and Nematology for assistance with photographs, and Dr. Howard Frank for review of this article. This project was supported by the Davies, Fischer and Eckes Endowment in biological control to Marjorie A. Hoy.

Selected References

- Baker EW, Wharton GW. 1952. An introduction to acarology. The Macmillan Company, NY, pp 232–235.
- Bochkov AV, OConnor BM. 2004. Phylogeny, taxonomy and biology of mites of the genera *Chelacheles* and *Neochelacheles* (Acari: Cheyletidae). Invertebrate Systematics 18: 547–592.
- Bottom S 2012. St. Augustine Orchid Society: Orchid Pests and Diseases. <http://staugorchidsociety.org/culturepests-pests.htm>. Accessed 6 February 2013.
- Corpuz-Raros LA, Sotto JM. 1977. Systematic studies of Philippine cheyletid mites (Acarina: Cheyletidae). II. New Species and new records. Kalikasan, Philippine Journal of Biology 6: 143–170.
- Ehara S, Ibrahim AG. 1988. Cheyletid mites associated with plants in the Malay Peninsula, with description of a new species (Acarina: Cheyletidae). Proceedings of the Japan Academy, Series B, Physical and Biological Sciences 64: 237–240.
- Fain A, Bochkov AV, Corpuz-Raros LA. 2002. A revision of the *Hemicheyletia* generic group (Acari: Cheyletidae). Entomologie 72: 27–66.
- Gerson U, Smiley RL, Ochoa R. 2003. Mites (Acari) for pest control. Blackwell Publishing, Oxford, UK, pp 103–111.
- Krantz GW, Walter DE. 2009. A Manual of Acarology, Third Edition. Texas Tech University Press, Lubbock, TX, pp 57–304.
- Marrone Bio Innovations. (2012). Grandevo. <http://www.marronebioinnovations.com/products/brand/grandevo/>. Accessed 12 September 2014.
- Naher N, Islam W, Haque MM. 2005. Predation of three predators on two-spotted spider mite, *Tetranychus urticae* Koch (Acari: Tetranychidae). Journal of Life and Earth Sciences 1: 1–4.
- Ray HA, Hoy MA. 2014a. Evaluation of the predacious mite *Hemicheyletia wellsina* (Acari: Cheyletidae) as a predator of arthropod pests of orchids. Experimental and Applied Acarology, DOI 10.1007/s10493-014-9833-8.
- Ray HA, Hoy MA. 2014b. Effects of reduced-risk insecticides on three orchid pests and two predacious natural enemies. Florida Entomologist 97: 972–978.

Ray HA, Hoy MA. 2014c. Role of silk webbing in the biology of *Hemicheyletia wellsina* (Acari: Cheyletidae). International Journal of Acarology *In press*.

Rosen D, Huffaker CB. 1983. An overview of desired attributes of effective biological control agents, with particular emphasis on mites. *In*: Hoy MA, Cunningham GL, Knutson L (eds) Biological Control of Pests by Mites. University of California. Berkeley, California. pp 2–11.

Tseng YH. 1972. A new cheyletid mite *Hemicheyletia arecana* n. sp. from Taiwan (Acarina: Prostigmata). Plant Protection Bulletin 14: 8–10.

Volgin VI. 1987. Acarina of the family Cheyletidae of the world. Amerind Publishing Co. Pvt. Ltd., New Delhi, India, pp 3–39.

Wharton GW, Arlian LG. 1972. Predatory behavior of the mite *Cheyletus aversor*. Animal Behaviour 20: 719–723.