

Soybean Looper *Chrysodeixis includens* (Walker) (Insecta: Lepidoptera: Noctuidae)¹

Ethan Carter and Jennifer L. Gillett-Kaufman²

The Featured Creatures collection provides in-depth profiles of insects, nematodes, arachnids and other organisms relevant to Florida. These profiles are intended for the use of interested laypersons with some knowledge of biology as well as academic audiences.

Introduction

The soybean looper, *Chrysodeixis includens* (Walker) (Figure 1), is a light to dark green caterpillar which derives its name from its preferred host plant (soybean, *Glycine max*) and the looping movement it makes while in motion (Figure 1). It is often confused with the cabbage looper (*Trichoplusia ni* (Hübner)), which is extremely similar in appearance and size. Although largely a pest of soybean, *Chrysodeixis includens* feeds on many other agronomic, vegetable, and floricultural crops. Larvae (caterpillars) are known to consume large amounts of foliage and occasionally feed on pods and fruits, while adults (moths) feed solely on flower nectar.

Distribution

Chrysodeixis includens is an abundant caterpillar feeding on soybean across much of North and South America, and all of Central America. Ranging from Maine to Texas, it is most heavily distributed along the southern and eastern United States, although it is found as far west as California (Herzog 1980). It overwinters only in south Florida and

south Texas in the United States, but populations may migrate from Central and South America and the Caribbean Islands (Smith et al. 1994; Carner et al. 1974). In the southern United States, populations are most prevalent from August to September (Burleigh 1972; Canerday and Arant 1966).



Figure 1. Soybean looper larva, *Chrysodeixis includens* (Walker), making its signature looping motion.
Credits: Lyle J. Buss, UF/IFAS

Description and Life Cycle

Eggs

Chrysodeixis includens undergoes complete metamorphosis, meaning it has egg, larval, pupal, and adult life stages. Females deposit eggs at night in the lower half of the canopy on the underside of leaves (Smith et al. 1994).

1. This document is EENY-695, one of a series of the Entomology and Nematology Department, UF/IFAS Extension. Original publication date November 2017. Revised March 2021. Visit the EDIS website at <https://edis.ifas.ufl.edu> for the currently supported version of this publication. This document is also available on the Featured Creatures website at <http://entomology.ifas.ufl.edu/creatures>.

2. Ethan Carter, RSA I, agriculture/pest management, UF/IFAS Extension Jackson County; and Jennifer L. Gillett-Kaufman, Department of Entomology, Texas A&M University; UF/IFAS Extension, Gainesville, FL 32611.

Larvae

After hatching, the soybean looper usually transitions through six instars, although five to seven instars have been observed (Shour and Sparks 1981). The first instar will last 3–4 days, while most other instars take 2–3 days to complete, with the exception of the final instar, which is 5–6 days (Shour and Sparks 1981). Caterpillars generally feed for 2–3 weeks before pupating.

In its larval stage, the soybean looper is predominantly light to dark green and typically has white stripes running down the dorsal and lateral portions of its body. The body of the soybean looper tends to be thicker and larger at the rear, tapering down towards the head and can reach 1.3 inches (3.03 cm) in length. *Chrysodeixis includens* can be differentiated from many similar looking species by inspecting the number of abdominal prolegs. Green caterpillars with three or more abdominal prolegs such as the [velvetbean caterpillar](#), *Anticarsia gemmatilis* (Hübner), can be easily distinguished from *Chrysodeixis includens* which has only two abdominal prolegs (Figure 2). The soybean looper may have black or green thoracic legs, while the cabbage looper has green thoracic legs (Figure 3) (Smith et al. 1994).



Figure 2. Soybean looper larva *Chrysodeixis includens* (Walker) (left) with two abdominal prolegs, compared to the velvetbean caterpillar *Anticarsia gemmatilis* (Hübner) (right) with four abdominal prolegs. Credits: James Castner and Lyle J. Buss, UF/IFAS



Figure 3. Soybean looper larva *Chrysodeixis includens* (Walker) (left) with black thoracic legs compared to the cabbage looper larva *Trichoplusia ni* (Hübner) (right) with green thoracic legs. Credits: Lyle J. Buss and James Castner, UF/IFAS

Pupae

Pupation occurs on the underside of leaves, and is completed in 7–9 days with moths emerging during the day (Smith et al. 1994; Shour and Sparks 1981). Pupae are 1/2 inch long (1.27 cm), and range in color from white to green (Shour and Sparks 1981).

Adults

The adult moth is small, with a wingspan ranging 1 to 1.5 inches (2.54–3.81 cm), and is mottled brown to black in color. Forewings are darker in color than the hindwings and possess silvery white spots. Presence of these spots can be used to distinguish the soybean looper from many other crop feeding pests, though it should be noted that the adult cabbage looper also has similar markings.



Figure 4. Adult soybean loopers, *Chrysodeixis includens* (Walker), with differing color patterns. Credits: Lyle J. Buss, UF/IFAS

Hosts

Chrysodeixis includens is known to consume plant material from many agronomic, vegetable, and ornamental crops. Recorded on 174 plants across 39 plant families, the greatest numbers of plants belong to the families Asteraceae, Solanaceae, Fabaceae, Lamiaceae, Brassicaceae, Poaceae, Amaranthaceae, Euphorbiaceae, and Malvaceae (Specht et al. 2015). They also have a wide range of wild host species, which includes *Amaranthus* sp., *Oxalis* sp., kudzu, lantana, groundcherry, and cocklebur, among others (Martin et al. 1976; Specht et al. 2015). Soybean is the preferred host, but it also feeds on other agronomic crops such as peanut, cotton, and corn. Documentation on vegetable crops include peas, crucifers, sweet potatoes, tomatoes, bell peppers, bush beans, cucumber, and watermelon (Canerday and Arant 1966; Martin et al. 1976, Specht et al. 2015). Floriculture crops include African daisy, begonia, carnation, chrysanthemum, geranium, lantana, and sunflower (Specht et al. 2015).

Damage and Economic Importance

Although it ranges through much of the United States, infestations of economic importance in soybean typically do not occur north of Texas, Arkansas, Mississippi, Alabama, Georgia, and South Carolina (Herzog 1980). *Chrysodeixis includens* is mainly a foliage feeder, but it will also feed on pods or fruit (Figure 5).

Once hatched, the soybean looper feeds in the lower half of the canopy where the egg was laid. The soybean looper

has an unusual defoliation pattern, feeding from the lower, inside canopy and then moving up and outwards (Smith et al. 1994). When scouting for pests, this type of feeding pattern can be easily overlooked, as the outer canopy appears undamaged until the top of the plant is defoliated. During early instars when *Chrysodeixis includens* is small, foliage is not consumed in large amounts as it is by later instars. Most foliage is consumed by the fourth to sixth instars, during the last 4–5 days of the larval stage (Reid and Greene 1973; Trichilo and Mack 1989; Smith et al. 1994).

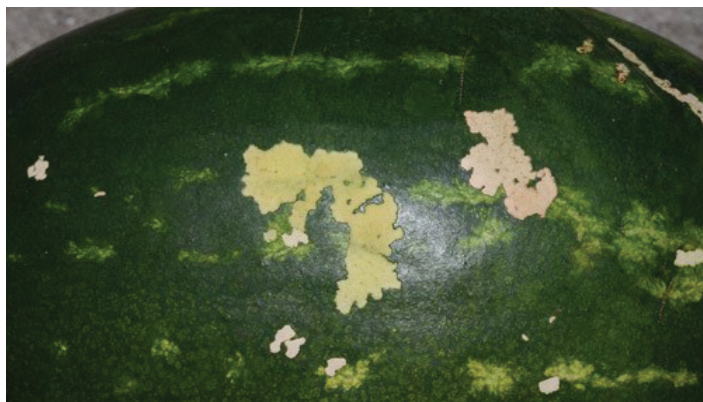


Figure 5. Feeding damage from the soybean looper, *Chrysodeixis includens* (Walker), on a watermelon rind.

Credits: Lyle J. Buss, UF/IFAS

Management

Predatory insects that target *Chrysodeixis includens* during larval development include various true bugs (big-eyed bugs, spined soldier bugs, etc.) and *Copidosoma floridanum*, a parasitic wasp (Catchot et al. 2014). A study by Burleigh (1972) found seven species of parasitoids that preyed on soybean looper, as well as two fungal pathogens (*Spicaria rileyi* and *Massospora* sp.) and a nematode (Mermithidae).

Treatment thresholds vary for this insect based upon the crop being damaged and its current production stage. Soybean, for example, is treated prior to bloom when 30% foliage loss has occurred and larvae are present, or after bloom when 15% foliage loss has occurred and larvae are present (Roberts et al. 2017). In contrast, cotton requires approximately five larvae per row foot when the youngest bolls are not mature to trigger an insecticide application (Smith et al. 1994). The threshold commonly used in peanut for foliage feeders is four to eight larvae per row foot, depending on plant age and canopy health (Abney 2017). Floriculture crops would have lower threshold levels based on aesthetic injury.

Bacillus thuringiensis (Bt) formulations are commonly used to suppress foliage feeding pests, and do not pose a threat to beneficial insects in the field (Funderburk et al. 1999).

Due to the large number of agronomic, vegetable, and floricultural crops that *Chrysodeixis includens* feeds on, it has developed resistance to many insecticides over time. Resistance has been confirmed for pyrethroid, carbamate, and organophosphate insecticides (Funderburk et al. 1999).

Selected References

Abney MR. 2017. Peanut: Peanut insect control. pp 201. In Horton DL (Eds.) [Georgia Pest Management Handbook](#). University of Georgia Extension. (29 November 2017)

Burleigh JG. 1972. Population dynamics and biotic controls of the soybean looper in Louisiana. *Environmental Entomology* 1: 290–294.

Canerday TD, Arant FS. 1966. The looper complex in Alabama (Lepidoptera, Plusiinae). *Environmental Entomology* 59: 742–743.

Carner GR, Shepard M, Turnipseed SG. 1974. Seasonal abundance of insect pests of soybeans. *Economic Entomology* 67: 487–493.

Catchot A, Layton B, Stewart SD. 2014. [Common beneficial arthropods found in field crops](#). E0020. (29 November 2017)

Funderburk J, McPherson R, Buntin D. 1999. Chapter 15: Soybean insect management. pp. 276–278. In Heatherly L, Hodges H (Eds.) *Soybean Production in the Midsouth*. CRC Press, Boca Raton, FL.

Herzog DC 1980. Sampling soybean looper on soybean. pp. 141–168. In Kogan M, Herzog DC (Eds.) *Sampling Methods in Soybean Entomology*. Springer, New York, USA.

Martin PB, Lingren PD, Greene GL. 1976. Relative abundance and host preferences of cabbage looper, soybean looper, tobacco budworm, and corn earworm on crops grown in northern Florida. *Environmental Entomology* 5: 878–882.

Reid JC, Greene GL. 1973. The soybean looper: Pupal weight, development time, and consumption of soybean foliage. *The Florida Entomologist* 56: 203–206.

Roberts P, Toews M, Buntin D. 2017. Soybean: Soybean insect control. pp 232. In Horton DL (Eds.) [Georgia Pest Management Handbook](#). University of Georgia Extension. (29 November 2017)

Shour MH, Sparks TC. 1981. Biology of the soybean looper *Pseudoplusia includens*: Characterization of last-stage larvae. *Annals of the Entomological Society of America* 74: 531–535.

Smith RH, Freeman B, Foshee W. 1994. Soybean loopers: Late season foliage feeders on cotton. Alabama Extension. Circular ANR-843.

Specht A, de Paula-Moraes SV, Sosa-Gomez DR. 2015. Host plants of *Chrysodeixis includens* (Walker) (Lepidoptera, Noctuidae, Plusiinae). *Revista Brasileira de Entomologia* 59: 343–345.

Trichilo PJ, Mack TP. 1989. Soybean leaf consumption by the soybean looper (Lepidoptera: Noctuidae) as a function of temperature, instar, and larval weight. *Economic Entomology* 82: 633–638.