

# Deer Flies, Yellow Flies and Horse Flies, *Chrysops*, *Diachlorus*, and *Tabanus* spp. (Insecta: Diptera: Tabanidae)<sup>1</sup>

J. M. Squitier<sup>2</sup>

*The Featured Creatures collection provides in-depth profiles of insects, nematodes, arachnids and other organisms relevant to Florida. These profiles are intended for the use of interested laypersons with some knowledge of biology as well as academic audiences.*

## Introduction

The family Tabanidae, commonly known as horse flies and deer flies, contains pests of cattle, horses, and humans. In Florida there are 35 species of Tabanidae that are considered economically important. Horse flies are in the genus *Tabanus* and deer flies are in the genus *Chrysops*. The **yellow fly**, *Diachlorus ferrugatus* (Fabricius), is known in Florida as a fierce biter. Like mosquitoes, it is the female fly that is responsible for inflicting a bite. The males are mainly pollen and nectar feeders. Tabanids are most likely encountered in hot summer and early fall weather. They are active during daylight hours.

## Distribution

Horse flies and deer flies are world wide in distribution. They are, however, unreported in Hawaii, Greenland, and Iceland. In the United States, Florida produces a large population of tabanids because of the availability of suitable habitat. Florida's mild climate and large, permanently wet and undeveloped areas provide good breeding areas.



Figure 1. An adult female deer fly, *Chrysops cincticornis*, laying eggs.  
Credits: Jerry Butler, University of Florida

## Description

### Eggs

Eggs are laid in masses ranging from 100 to 1000 eggs. Eggs are laid in layers on a vertical surface, such as overhanging foliage, projecting rocks, sticks, and aquatic vegetation. Aquatic vegetation is preferred. A shiny or chalky secretion, which aids in water protection, often covers eggs. The vertical surfaces on which the eggs are deposited are always directly over water and wet ground favorable to

1. This document is EENY-028, one of a series of the Department of Entomology and Nematology, UF/IFAS Extension. Original publication date February 1998. Revised October 2017, June 2021, and November 2024. Visit the EDIS website at <https://edis.ifas.ufl.edu> for the currently supported version of this publication.

2. J.M. Squitier, former graduate assistant, Department of Entomology and Nematology; UF/IFAS Extension, Gainesville, FL 32611.

the development of larvae. The female will not deposit egg masses on vegetation that is too dense. Eggs are initially a creamy white color but soon darken to gray and black. Eggs are cylindrical in shape and measure from 1 to 2.5 mm ( $\sim\frac{1}{32}$  to  $\frac{1}{8}$  in) in length. Eggs hatch in five to seven days, depending upon ambient weather conditions, and the larvae fall to the moist soil and water below.



Figure 2. Deer fly, *Chrysops* sp., egg mass after darkening.  
Credits: Jerry Butler, University of Florida



Figure 3. Typical habitat used by biting flies for egg laying.  
Credits: John Capinera, University of Florida

## Larvae

Larvae use a hatching spine to break out of the egg case. The larvae are aquatic, semi-aquatic or terrestrial. *Chrysops* spp. are termed “hydrobionts” and are found in areas with high water content. *Tabanus* spp. prefer drier substrates and are “hemi-hydrobionts.” The larvae taper at each end and are usually whitish in color, but also can be brownish

or green depending on the species. Black bands are found around each segment of the body in many species. The larva breathes through a tracheal siphon located at their posterior end. The larva has a small head and 11 to 12 additional segments. Larvae pass through six to nine stadia. The time spent in the larval stage can last from a few months to a year. The larvae of *Chrysops* feed upon organic matter in the soil. *Tabanus* spp. feed upon insect larvae, crustaceans, and earthworms. Even though the *Tabanus* spp. are considered to be carnivorous and cannibalistic, reports of as many as 120 larvae per square yard have been found. The larva moves into the upper 2.5 to 5.0 cm ( $\sim 1$  to 2 in) of the soil, where it is drier, when it is ready to pupate. Within two days after moving to the surface the pupal stage is reached.



Figure 4. Typical larva of a Tabanidae species.  
Credits: Jason M. Squitier, University of Florida

## Pupae

The pupae are brown colored, rounded anteriorly, tapered posteriorly, and have leg and wing cases attached to the body. There is a row of spines encircling each abdominal segment. A pupal “aster” consisting of six pointed projections is located at the apex of the abdomen. The pupal stage generally lasts from two to three weeks.

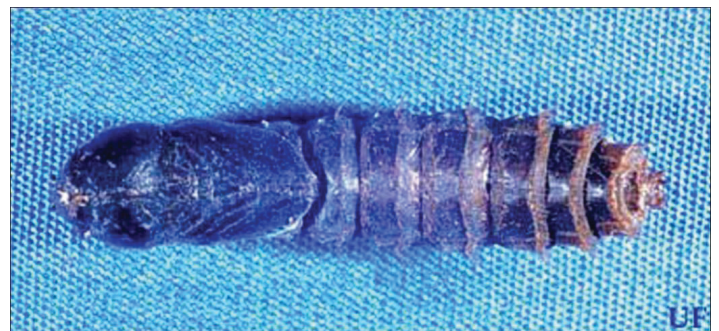


Figure 5. Typical Tabanidae pupa.  
Credits: Jason M. Squitier, University of Florida

## Adult

The adult fly emerges from the pupal case via a slit located along the thorax of the case. In most species the males emerge before the females. After emergence of both sexes,



the flies mate. Mating starts with the male pursuing the female. Mating is initiated in the air and completed on the ground. The female then deposits an egg mass and is ready to seek a host. Adult Tabanidae are large flies with broad bodies and bulging eyes. The males are easily differentiated from female flies, because eyes are contiguous in the males and widely separated in the females. The antennae are three segmented. The thorax and abdomen are covered with fine hairs. Deer flies range in length from 7 to 10 mm while horse flies are from 10 to 25 mm (~ $\frac{3}{8}$  to 1 in). The deer flies are yellow to black, have stripes on the abdomen, and possess mottled wings with dark patches. Yellow flies are yellowish with the same body shape of deer flies but have dark purple to black eyes marked with fluorescent green lines. Horse flies are black to dark brown with green or black eyes. Adult deer flies have apical spurs on the hind tibiae that are not present in horse flies.



Figure 6. Adult female deer fly, *Chrysops pikei* Whitney.  
Credits: Sturgis McKeever, Georgia Southern University; <https://www.insectimages.org/>



Figure 7. Adult yellow fly, *Diachlorus ferrugatus* (Fabricius).  
Credits: Jerry Butler, University of Florida



Figure 8. Adult horse fly, *Tabanus* sp.  
Credits: James Castner, University of Florida

## Life Cycle

Adult tabanids are encountered in Florida between the months of May and September. Most species overwinter in the larval stage and pupate during the spring and early summer. An egg mass has been found as early as May 5 and as late October 13. Most have a yearlong life cycle, but some larger species may take two or three years. Adult life span is 30 to 60 days.

## Damage

Tabanids lie in wait in shady areas under bushes and trees for a host to happen by. Sight is the main host-finding mechanism, but carbon dioxide and odor also play a role. Moving objects, especially if dark colored, are most prone to attack. Attacks occur during daylight hours with a peak beginning at sunrise and lasting three hours. A second peak is two hours before sunset and commences shortly after. Attack frequency is low on overcast days or at temperatures below 22°C (71.6°F) and above 32°C (89.6°F). On livestock, biting occurs on the abdomen, legs, and neck. Tabanids inflict deep wounds that cause a flow of blood. The mandibles and maxillae penetrate the skin in a scissor-like action. Anticoagulants in the saliva are pumped into the wound and the blood is ingested through the sponging labella. Pathogens may be transmitted from flies that are disturbed while feeding on one animal and begin feeding on another. It is known that deer flies can mechanically vector *Tularemia* and *Loa loa*, and horse flies transmit *Anthrax*. Fly attacks result in lowered gains and low milk production in livestock animals. In 1976, estimated losses in the United States were at 40 million dollars. One cattle ranch in Kentucky lost an average 100 lb. per animal due to tabanids. It is not uncommon to see as many as 100 flies

feeding on an animal at one time. Twenty to thirty flies feeding for six hours are capable of taking 100 cc (3.4 fl oz) of blood.

## Biological Control

There are no effective biological control programs for controlling tabanids. There are native beneficial insects that target tabanids. Eggs are parasitized by such Hymenopteran families as Trichogrammatidae, Scelionidae, and Chalcididae. Diapriidae and Pteromalidae (Hymenoptera), and Bombyliidae and Tachinidae (Diptera) parasitize the larvae and pupa. Tabanid adults are used as provisions for nest building wasps. Cattle egrets and killdeer are also tabanid feeders.

## Management

Currently there are no adequate means for managing populations. Traps are sometimes effective in small areas such as yards, camping sites, and swimming pools. Trapping of nuisance flies has reduced their numbers on the Atlantic Coast of the United States. Traps have been effective when used around cattle that are confined to manageable areas.

Some traps are black and shiny balls. The flies are attracted to these objects as the wind moves them. Malaise traps can catch large numbers of flies by simply being in their flight paths or by the use of attractants, such as CO<sub>2</sub> and octenol. These traps are mostly useful for sampling. For personal protection, long sleeve shirts and pants in combination with a repellent containing diethyltoluamide (DEET), citronella, or geraniol are effective. For livestock, pyrethroid pour-ons function as limited repellents. Self-application methods are not effective for horse flies. Ear tags and head collars impregnated with insecticides have had success in control. For removal trapping, recent research has shown that blue cylinders (inverted cups, for example) coated with sticky material and attached to slow moving (<7 mi/hr) objects (e.g., the front of a truck or riding lawnmower) or on top of a cap worn atop a person's head are effective at reducing the abundance of these flies. See [Trolling Deer Fly Trap](#) for more information.

Some large-scale methods such as manipulation of the habitat have been suggested. This could be done by removing unnecessary woody plants from residential areas or draining wet areas to reduce suitable breeding habitat.

The use of insecticides is generally thought of as economically unfeasible. Granular insecticides were applied to the water in the 1950s, but environmental effects were

eventually considered. Spraying for the adults is also ineffective. Individual protection from adults can be obtained by using a repellent on exposed skin and clothing prior to exposure.

### Florida Insect Management Guide for Biting Flies



Figure 9. Ball trap, black sphere, used to lure biting flies.  
Credits: Jason Squitier, University of Florida



Figure 10. Attractant trap, with black sphere, used to lure biting flies.  
Credits: Andy Rasmussen, Florida A&M University





Figure 11. Malaise traps can catch large numbers of biting flies by simply being in their flight paths or by the use of attractants, such as CO<sub>2</sub> and octenol.

Credits: Jason Squitier, University of Florida



Figure 12. A blue cylinder covered with sticky material makes an effective removal trap for deer flies and other tabanids when attached to a slow moving object (< 7 mi/hr).

Credits: R. F. Mizell, University of Florida

## Selected References

- Anderson JF. 1973. Biting behavior of saltmarsh deer flies (Diptera: Tabanidae). *Annals of the Entomological Society of America* 66: 21–23.
- Borror DJ, Triplehorn CA, Johnson NF. 1992. *An Introduction to the Study of Insects*. Sanders College Publishing, Ft. Worth. 512 pp.

- Burnet AM, Hays KL. 1974. Some influences of meteorological factors on flight activity of female horse flies (Diptera: Tabanidae). *Environmental Entomology* 3: 515–521.
- Catts EP, Olkowski W. 1972. Biology of Tabanide (Diptera): mating and feeding behavior of *Chrysops fuliginosus*. *Environmental Entomology* 1: 448–453.
- Curran CH. 1934. The Families and Genera of North American Diptera. American Museum of Natural History, New York. pp. 148–149.
- Essig EO. 1958. *Insects and Mites of Western North America*. The Macmillan Co., New York. 1050 pp.
- Fairchild GB, Weems HV Jr. 1973. *Doachlorus ferrugatus* (Fabricius), a fierce biting fly (Diptera: Tabanidae). Florida Department of Agriculture and Consumer Services, Division of Plant Industry Entomology Circular 139.
- Fasulo TR. 2002. Bloodsucking Insects and Filth-feeding Flies. UF/IFAS. CD-ROM. SW 156.
- Fasulo TR, Kern W, Koehler PG, Short DE. 2005. Pests In and Around the Home. Version 2.0. UF/IFAS. CD-ROM. SW 126.
- Foster CA, Renuad GD, Hays KL. 1973. Some effects of the environment on oviposition by *Chrysops* (Diptera: Tabanidae). *Environmental Entomology* 2: 1048–1050.
- French FE, Hagan DL. 1995. Two-tier box trap catches *Chrysops atlanticus* and *C. fuliginosus* (Diptera: Tabanidae) near a Georgia salt marsh. *Journal of Medical Entomology* 32: 197–200.
- French FE, Kline DL. 1989. 1-octen-3-ol, an effective trap attractant for Tabanidae (Diptera). *Journal of Medical Entomology* 26: 459–461.
- Hansens EJ, Robinson JW. 1973. Emergence and movement of the saltmarsh deer flies *Chrysops fuliginosus* and *Chrysops atlanticus*. *Annals of the Entomological Society of America* 66: 1215–1218.
- Harwood RF, James MT. 1979. *Entomology in Human and Animal Health*. Macmillan Publishing Co., New York. 548 pp.
- Hermes WB. 1961. *Medical Entomology*. The Macmillan Co., New York. 582 pp.

Jones CM, Anthony DW. 1964. The Tabanidae (Diptera) of Florida. U.S.D.A. Bulletin 1295: 1–85.

Logothetis C, Schwardt HH. 1948. Biological studies on the horse flies of New York. *Journal of Economic Entomology* 41: 335–336.

McKeever S, French FE. 1997. Fascinating, beautiful, blood feeders. *American Entomologist* 43: 217–225.

Mizell RF. 1998. The trolling deer fly trap. *UF/IFAS Pest Alert*. No longer available online

Pechuman LL. 1973. Horse flies and deer flies of Virginia (Diptera: Tabanidae). *Virginia Research Division Bulletin* 81: 1–9.

Riley WA, Johannsen OA. 1938. *Medical Entomology*. McGraw-Hill Book Co, Inc., New York. 483 pp.

Tashiro H, Schwart HH. 1949. Biology of the major species of horse flies of central New York. *Journal of Economic Entomology* 42: 269–272.

Wall R, Shearer D. 1997. *Veterinary Entomology*. Chapman & Hall, New York. 439 pp.

Wilson BH. 1968. Reduction of Tabanid populations on cattle with sticky traps baited with dry ice. *Journal of Economic Entomology* 61: 827–829.