

# Florida Darkwinged Subterranean Termite, *Amitermes floridensis* Scheffrahn, Su, and Mangold (Insecta: Blattodea: Termitidae: Termitinae)<sup>1</sup>

Rudolf H. Scheffrahn and Nan-Yao Su<sup>2</sup>

## Introduction

As a member of the highly specialized termite family Termitidae, *Amitermes floridensis* is unique among all termites found in the eastern United States. Occurring only in Florida, it is an ancient scrubland relic of a once broad distribution of *Amitermes* that extended across Texas and the Gulf region. Although astute pest control operators knew of this termite decades before, *Amitermes floridensis* was not described until 1989 from specimens collected in St. Petersburg, Florida. It is the most recent native termite species to be recognized in the United States.

## Distribution

*Amitermes floridensis* has a spotty distribution in west central Florida in a region bordered by Tarpon Springs to the north, Punta Gorda to the south, and Sebring to the east. Reports by pest control operators and collection data indicate that Pinellas County has the greatest urban abundance of *A. floridensis* in the State with most of the activity limited to St. Petersburg.



Figure 1. Distribution of the Florida darkwinged subterranean termite, *Amitermes floridensis* Scheffrahn, Su, and Mangold.

Credits: Rudolf H. Scheffrahn, UF/IFAS

## Description and Identification

As with other subterranean termites, *A. floridensis* builds a system of foraging galleries that connect the nest chambers in the soil with feeding sites above and below the ground. Colonies of *A. floridensis* consist of three primary castes: the reproductives (king, queen, unmated winged forms called alates, and immatures called nymphs), soldiers, and workers. The workers of *A. floridensis* are true sterile adults. They cannot molt and will not become reproductives or

1. This document is EENY-112, one of a series of the Entomology and Nematology Department, UF/IFAS Extension. Original publication date August 1999. Revised March 2008. Reviewed February 2021. Visit the EDIS website at <https://edis.ifas.ufl.edu>.
2. Rudolf H. Scheffrahn, professor and Nan-Yao Su, professor, Entomology and Nematology Department, Ft. Lauderdale - REC, UF/IFAS Extension, Ft. Lauderdale, FL.

soldiers. The workers excavate soil and feed on wood to nourish themselves and their nestmates. Deeper into the nest, young whitish termites, called larvae, and eggs can be found. The king and queen live furthest into the nest system and attempts to collect them have been unsuccessful. The queens of other *Amitermes* species have greatly enlarged abdomens for massive egg production. Soldiers and alates have the most obvious characters for species identification, but workers of *A. floridensis* can also be distinguished from other subterranean termites found in Florida. All castes except for the nymphs and alates are present in colonies year round.

*Amitermes floridensis* alates develop from nymphs that appear in the colony before flight season. Nymphs resemble large workers but have wing pads and often have less abdominal coloration than workers. Alates are small and have two pairs of smoothly textured and darkly pigmented wings that are about equal in size and shape. Each wing has two darkened and enlarged veins (subcosta and radial sector) in their leading (costal) margins. The upper surfaces of the head, thorax, and abdomen of alates appear dark brown to black. The alate body is about 0.15 inches (4 mm) in length without wings and 0.35 inches (9 mm) with wings. Shed wings are about 0.3 inches (7 mm) long and appear disproportionately large for the size of the alate body.

The soldiers are very small (less than 3.5 mm long) and have a bulbous orange head and black, sickle- shaped mandibles. They differ from other subterranean termites in Florida by having a prominent conical tooth near the base of each mandible. The soldiers have an opening near the front of the head called the fontanelle through which is secreted a mixture of ant-repelling, volatile compounds called sesquiterpenoids.

Workers of *A. floridensis* are about the same size as soldiers, but workers lack the defensive structures and coloration of the soldier head capsule. The workers move more slowly than those of other subterranean termites and have a more constricted thorax and inflated abdomen giving them a “plump” appearance compared with workers of native subterranean termites in the genus *Reticulitermes*. The abdominal wall is transparent and the coiled digestive tube is filled with dark fecal contents that give the abdomen a distinctive gray color.

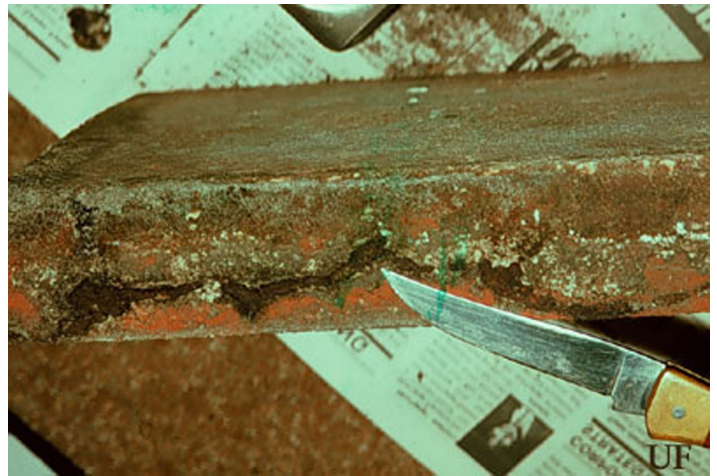


Figure 2. Broken foraging tube of the Florida darkwinged subterranean termite, *Amitermes floridensis* Scheffrahn, Su, and Mangold, on patio stone to expose black fecal coating.  
Credits: Rudolf H. Scheffrahn, UF/IFAS



Figure 3. Alate of the Florida darkwinged subterranean termite, *Amitermes floridensis* Scheffrahn, Su, and Mangold.  
Credits: Rudolf H. Scheffrahn, UF/IFAS

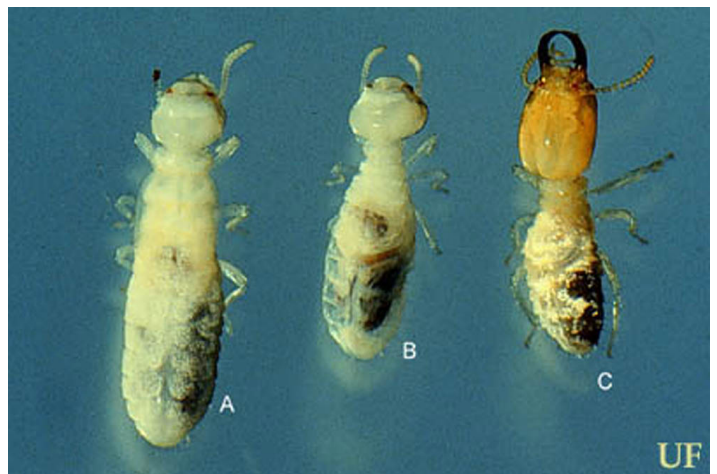


Figure 4. Nymph (A), worker (B) and soldier (C) of the Florida darkwinged subterranean termite, *Amitermes floridensis* Scheffrahn, Su, and Mangold.  
Credits: Rudolf H. Scheffrahn, UF/IFAS

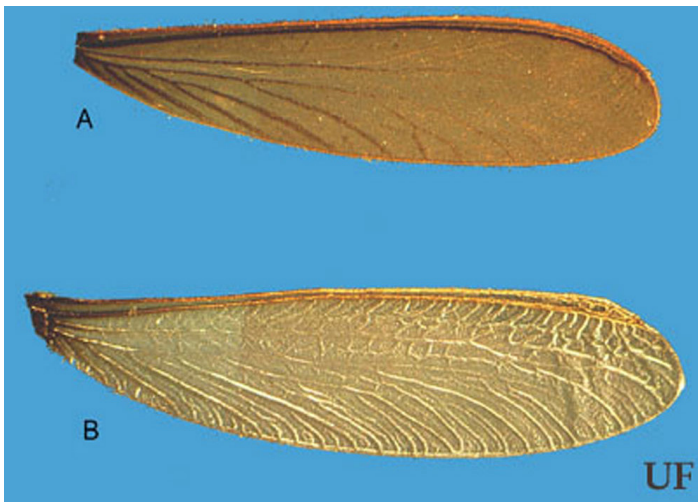


Figure 5. comparison of the wings of the Florida darkwinged subterranean termite, *Amitermes floridensis* Scheffrahn, Su, and Mangold (A), and the eastern subterranean termite, *Reticulitermes flavipes* (Kollar) (B).  
Credits: Rudolf H. Scheffrahn, UF/IFAS

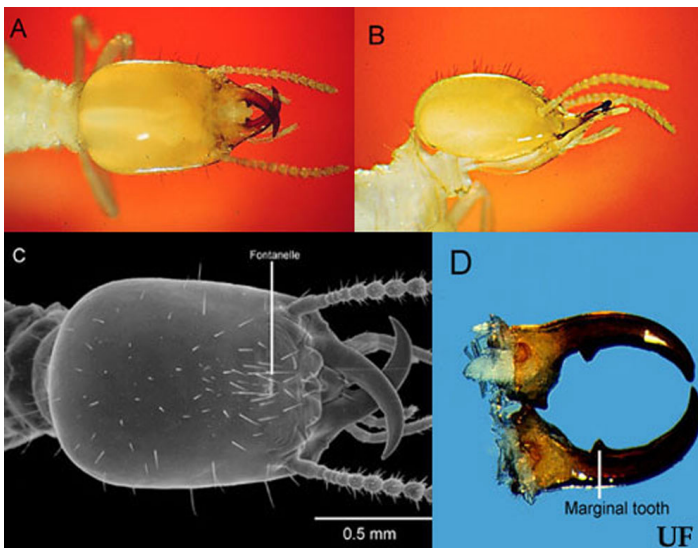


Figure 6. Soldier of the Florida darkwinged subterranean termite, *Amitermes floridensis* Scheffrahn, Su, and Mangold; dorsal (A) and lateral (B) views of soldier head capsule; scanning electron micrograph (C) of dorsal view of soldier head capsule; dissected soldier mandibles (D).  
Credits: Rudolf H. Scheffrahn, UF/IFAS

## Life History

In the spring of each year, nymphs appear in mature colonies. The nymphs molt into alates that leave the colony during a series of dispersal flights over the summer. Alates of *A. floridensis* launch themselves from free-standing tunnels called “swarm tubes”. Alates are restricted to flights in calm air during or immediately after rain showers. Flights occur during daylight hours from July to September in contrast to the springtime flights for other subterranean termite species in Florida. These dispersal flights or “swarms” are often massive and a witness once described a series of alate launches as looking like plumes

of smoke coming from the ground. There are no reports of indoor flights. The alates are weak fliers and are often found adhering en masse to wet vehicles, buildings, and vegetation. After a brief flight, the alates shed their wings and segregate into male/female pairs. Males follow females in tandem in search of subterranean nest sites under wood, stones, and other surface debris near food. After many years of growth, successful colonies mature to produce their first crop of alates.



Figure 7. Size comparison of soldiers of the eastern subterranean termite, *Reticulitermes flavipes* (Kollar) (A), and the Florida darkwinged subterranean termite, *Amitermes floridensis* Scheffrahn, Su, and Mangold (B).  
Credits: Rudolf H. Scheffrahn, UF/IFAS

## Damage

Unlike most other subterranean termites in the eastern United States, *A. floridensis* workers tend to graze wood surfaces instead of excavating them with galleries. Foraging tunnels are built over feeding sites and are covered with characteristic black fecal lining. Attacked wood may be partially decayed and is often in direct contact with the soil such as fallen branches, tree trunks, fence posts, and storage sheds. Although colonies may be large and foraging tunnels extensive below ground, *A. floridensis* forages only short distances above ground in search of food sources. Therefore, structural infestations are usually limited to porches, door frames, carpet tack strips, and foundation elements where foragers gain entry through cracks and joints.

## Pest Status

For reasons mentioned above, *A. floridensis* is an uncommon structural pest. Wood damage is usually minor, however alates, wings, and foraging tubes are a sanitary nuisance.



Figure 8. Free standing foraging/flight tunnel of the Florida darkwinged subterranean termite, *Amitermes floridensis* Scheffrahn, Su, and Mangold, extending from sandy soil.  
Credits: Rudolf H. Scheffrahn, UF/IFAS

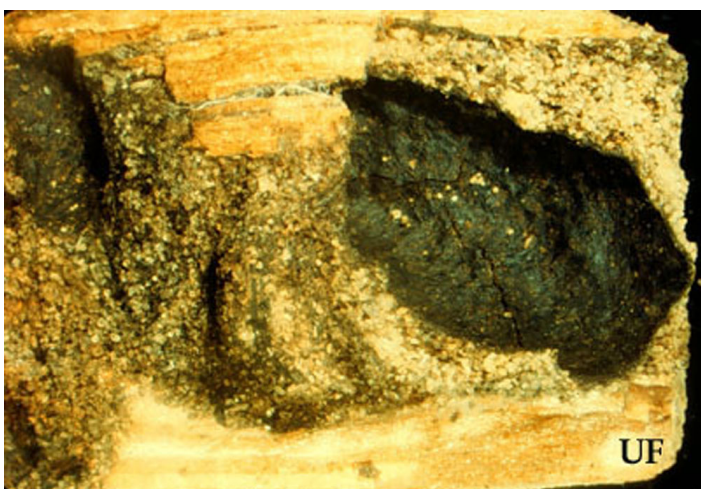


Figure 9. Partially broken foraging tube of the Florida darkwinged subterranean termite, *Amitermes floridensis* Scheffrahn, Su, and Mangold, in decayed 2x4 board showing black fecal coating.  
Credits: Rudolf H. Scheffrahn, UF/IFAS



Figure 10. Foraging tubes and workings of the Florida darkwinged subterranean termite, *Amitermes floridensis* Scheffrahn, Su, and Mangold, to a palm trunk in St. Petersburg, Florida.  
Credits: J.R. Mangold

## Management

As with all subterranean termites, wood-to-ground contact should be avoided. In structures, chemical barriers should be applied as “spot” treatments in areas where the termites are suspected of emerging from the soil. Because of their limited foraging potential, extensive barrier treatments beyond the immediate area of the infestation are usually not warranted. This species is known to enter and feed inside termite bait stations although the efficacy of baits against *A. floridensis* is unknown. In baits containing insect growth regulators, any effect would be protracted because the workers do not molt so only the developing young would be affected.

## Selected References

- Scheffrahn, R.H., L.K. Gaston, J.J. Sims, and M.K. Rust. 1983. Identification of the defensive secretion from soldiers of the North American termite, *Amitermes wheeleri* (Desneux) (Isoptera: Termitidae). *J. Chem. Ecol.* 9: 1293-1305.
- Scheffrahn, R. H., J. R. Mangold, and N.-Y. Su. 1988. A survey of structure-infesting termites of peninsular Florida. *Florida Entomol.* 71: 615-630.
- Scheffrahn, R. H., N.-Y. Su, and J. R. Mangold. 1989. *Amitermes floridensis*, a new species and first record of a higher termite in the eastern United States (Isoptera: Termitidae: Termitinae). *Florida Entomol.* 72: 618- 625.
- Scheffrahn, R.H. and N.-Y. Su. 1994. Keys to soldier and winged adult termites (Isoptera) of Florida. *Florida Entomol.* 77: 460-474.
- Scheffrahn, R. H., N.-Y. Su, and J. R. Mangold. 1990. A new termite species in Florida: *Amitermes floridensis*. *PCO, Off. Mag. Florida Pest Control Assn.*, Oct., cover and pp. 10-14.
- Scheffrahn, R.H. and N.-Y. Su. Key to termite soldiers of Florida. Ft. Lauderdale Research Report 96-2.
- Scheffrahn, R.H. and N.-Y. Su. Key to winged termites of Florida. Ft. Lauderdale Research Report 96-3.