

Cactus Bug, *Chelinidea vittiger aequoris* McAtee (Insecta: Hemiptera: Coreidae)¹

F. W. Mead and J. L. Herring²

The Featured Creatures collection provides in-depth profiles of insects, nematodes, arachnids and other organisms relevant to Florida. These profiles are intended for the use of interested laypersons with some knowledge of biology as well as academic audiences.

Introduction

Insects that attack prickly pear cacti, *Opuntia* spp., in North America have been under investigation for a century. The primary purpose of this research has been to determine which insects have the most promise as biocontrol agents where cacti are severe weed problems. In Australia, for example, over 30,000,000 acres of pastureland were rendered useless because of dense stands of exotic prickly pear cacti. One of the native American cactus insects that showed early promise as a control agent was the coreid bug, *Chelinidea vittiger* Uhler. DeVol and Goeden (1973) discussed the value of this species in biological weed control and reported that it was ineffective in controlling prickly pears in Australia and Santa Cruz Island, California. In most areas of North America prickly pears are not a problem because a complex of insects keeps them under control. *Chelinidea vittiger* is considered a minor component of that complex. In Florida and the other southeastern states, the only *Chelinidea* present is *Chelinidea vittiger aequoris* McAtee.

Systematics

The principal systematic treatments of North American *Chelinidea* have been provided by McAtee (1919), Hamlin (1924), and Torre-Bueno (1941). McAtee (1919) recognized two species of *Chelinidea* from the Nearctic region and divided *Chelinidea vittiger* into two subspecies by his description of the new subspecies *aequoris*. He saw color variations in each subspecies and provided formal varietal names for these forms. Within *Chelinidea vittiger aequoris* he described the new variety *artuatra*. Florida specimens of *Chelinidea* generally fit the latter color form of *aequoris*. The description of typical *Chelinidea vittiger aequoris* is based on Texas specimens. Hamlin (1924) reviewed the genus *Chelinidea* after studying specimens from the United States and Mexico for several years. He repeated descriptions of new species first published in 1923, provided a key to the four species in the genus, and agreed with McAtee's treatment of *Chelinidea vittiger*.

Distribution

Chelinidea vittiger, in its various forms, ranges from California to Virginia, northward to Montana, and southward to northern Mexico. Hamlin (1932) showed central Florida as the southeastern U.S. limit of *Chelinidea vittiger aequoris*.

Hamlin (1924) apparently was the first to report *Chelinidea vittiger aequoris* from Florida (in Gainesville). He did not report it elsewhere in Florida, but took live specimens to

1. This document is EENY208, one of a series of the Department of Entomology and Nematology, UF/IFAS Extension. Original publication date May 2001. Revised December 2014 and June 2024. Visit the EDIS website at <https://edis.ifas.ufl.edu> for the currently supported version of this publication. This document is also available on the Featured Creatures website at <https://entnemdept.ufl.edu/creatures/>.

2. F. W. Mead and J. L. Herring, Florida Department of Agriculture and Consumer Services, Division of Plant Industry, Gainesville, FL.

Miami where he reared them on *Opuntia* spp. A specimen in the U.S. National Museum of Natural History labeled Miami, Florida (no other data), probably came from this laboratory colony. We do not know of a valid Dade County record for *Chelinidea*. Blatchley (1926) did not list any Florida records of *Chelinidea*. Hussey (1952) listed three Florida records of *Chelinidea vittiger aequoris*.

Hamlin (1924) apparently was the first to report *Chelinidea vittiger aequoris* from Florida (in Gainesville). He did not report it elsewhere in Florida, but took live specimens to Miami where he reared them on *Opuntia* spp. A specimen in the U.S. National Museum of Natural History labeled Miami, Florida (no other data), probably came from this laboratory colony. We do not know of a valid Dade County record for *Chelinidea*. Blatchley (1926) did not list any Florida records of *Chelinidea*. Hussey (1952) listed three Florida records of *C. v. aequoris*.

Description and Identification

The adult has a length of 10 mm to 13.5 mm ($3/8 - 1/2$ in); width across pronotum 4 mm to 5 mm ($\sim 1/8$ in). The most striking features of *Chelinidea vittiger aequoris* are a conspicuous dorsal, yellow stripe on the head, nearly solid yellow pronotum, and yellow veins of the forewing. General appearance is similar to the better known squash bugs (*Anasa* spp.) which lack the extensive yellow pronotum and the yellowish veins of the corium and clavus that starkly contrast with the generally dark hemelytra. This contrast is less apparent in other forms and species of *Chelinidea*. Other notable yellowish areas of specimens from Florida are the entire venter, basal half of costal margin of corium, and exposed margin of the abdomen. Florida specimens have the antennae, most of head, legs, and hemelytra dark brown to blackish. The membrane of the forewing often has a greenish cast and is generally darker than the leathery basal portion. A black transverse bar is nearly always present at the base of the pronotum. The antennae have a slightly dilated appearance which, on close inspection, reveal 3-sided (prism-shaped) 2nd and 3rd segments (also present in older nymphs). An overall feature of *Chelinidea* is the glabrous appearance.

Hunter et al. (1912) described the egg and five nymphal stages of *Chelinidea vittiger*. Hamlin (1924) gave detailed descriptions of the egg and each instar (stage) of *Chelinidea vittiger aequoris*. He also listed color changes that occur from one instar to another and described three color forms within the 5th instar.



Figure 1. The cactus bug, *Chelinidea vittiger aequoris* McAtee, on an *Opuntia* cactus.

Credits: Lyle Buss, UF/IFAS

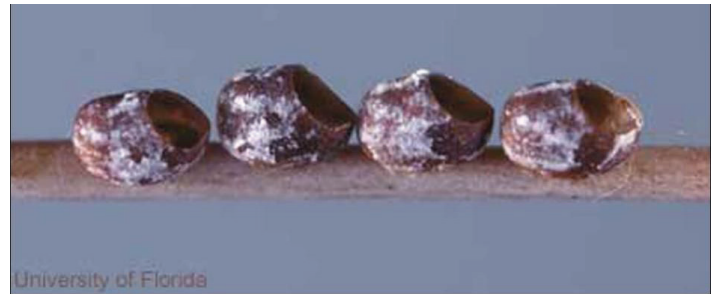


Figure 2. Eggs of *Chelinidea vittiger aequoris* McAtee, a cactus bug, on prickly pear spine.

Credits: Lyle J. Buss, UF/IFAS

Bionomics

Consult Hunter et al. (1912), Hamlin (1924, 1932), Mann (1969), and DeVol and Goeden (1973) for reviews on economics and biology of *Chelinidea* spp. Their economic status depends on whether the host cactus plants are weeds, ornamentals, reserve forage, or hosts for the dye-producing cochineal scales, *Dactylopius* spp. Native prickly pears in Florida are widespread but usually are kept at tolerable levels by a combination of environmental factors, including scales, moths, beetles, coreids, fungus diseases, etc.

Mann (1969) believed that *Chelinidea* spp. exercise a greater degree of control in preventing growth and fruiting than in destroying cactus pads. All stages of these cactus bugs are associated with cacti. *Chelinidea vittiger aequoris* is one of the forms that feeds primarily on cacti in subgenus *Platyopuntia* of *Opuntia*. Hamlin (1924) reported hibernation normally occurring from the first part of December to mid-March in Florida, usually as adults but occasionally as large nymphs.

First eggs of the season are deposited in March longitudinally on the underside of prickly pear spines. The egg laying period in each generation extends over two to

three months, the rate of nymphal development varies considerably, and adults are long lived (nine to 12 months under field conditions; a reared female of *Chelinidea vittiger* survived for 542 days under cage conditions in Australia according to Mann). Thus during warm weather, it is possible to have several stages present, contributing to confusion on the number of broods per year. For example, Hamlin (1924, 1932) suggested four to five broods annually, but Mann (1969) listed only two generations per year for *Chelinidea vittiger aequoris*. DeVol and Goeden (1973) reported *Chelinidea vittiger vittiger* as univoltine in southern California. Data on Florida specimens seen by us are for April to October, although literature records add the other months except January. Hamlin (1924) remarked that, with few exceptions, cactus feeding insects (including *Chelinidea*) are sluggish. He ascribed this habit to their association with host plants that afford a high degree of protection because of their spines.



Figure 3. Nymph of *Chelinidea vittiger aequoris* McAtee, a cactus bug that feeds on prickly pear cacti, *Opuntia* spp. Feeding punctures result in circular discolored areas.
Credits: Lyle J. Buss, UF/IFAS

Detection

- Adults and nymphs feed chiefly in colonies on the more distal prickly pear joints (pads), but also to some extent on the fruits and older joints. Look for eggs on the cactus spines.
- Search for inactive bugs during cold weather under debris at the base of the cactus plants or under prostrate joints.
- The first indications of feeding are lighter circular spots on the cactus joints which appear only after feeding has progressed for some time. Conspicuous, white *Chelinidea* excrement may cover the surface of the joint.

- As injury proceeds, the spots become larger and coalesce; the entire epidermis assumes deadened, yellowish, and pitted appearance.
- Secondary invasion by fungi causes large black spots that can result in the infected areas dropping out, leaving a nearly circular opening through the joint, or an entire pad may drop off.



Figure 4. Nymph of *Chelinidea vittiger aequoris* McAtee, a cactus bug, and damage on prickly pear spine.
Credits: Lyle J. Buss, UF/IFAS

Selected References

- Blatchley WS. 1926. *Heteroptera or true bugs of Eastern North America, with especial reference to the faunas of Indiana and Florida*. Nature Publishing Company, Indianapolis. 1116 p.
- DeVol JE, Goeden RD. 1973. "Biology of *Chelinidea vittiger* with notes on its host- plant relationships and value in biological weed control." *Environmental Entomology* 2: 231–240.
- Hamlin JC. 1924. "A review of the genus *Chelinidea* (Hemiptera-Heteroptera) with biological data." *Annals of the Entomological Society of America Publishing Company* 25: 89–120.
- Hunter WD, Pratt FC, Mitchell JD. 1912. "The principal cactus insects of the United States." *USDA Bureau of Entomology Bulletin* 113: 1–71.

Hussey RF. 1952. "Food plants and new records for some Hemiptera in Florida." *Florida Entomologist* 35: 117–118.

Mann J. 1969. "Cactus-feeding insects and mites." U.S. *National Museum Bulletin* 256: 1–158.

McAtee WL. 1919. "Notes on Nearctic Heteroptera." *Bulletin of the Brooklyn Entomological Society* 14: 8–15.

Torre-Bueno de la JR. 1941. "A synopsis of the Hemiptera-Heteroptera of America north of Mexico. Part II. Families Coreidae, Alydidae, Corizidae, Neididae, Pyrrhocoridae and Thaumastotheriidae." *Entomological Americana* 21: 41–122.