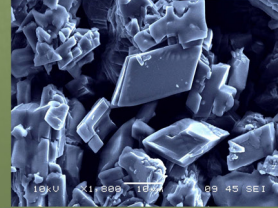


# Pesticide Formulations

## PRESSURIZED AEROSOL



PESTICIDE PRODUCTS are formulated with a mix of active ingredients and inert, or inactive, ingredients. Pesticide concentrates must be diluted before use. Ready-to-use pesticides require no dilution.



Closeup of microencapsulated concentrate

## LIQUIDS



EC: Emulsifiable Concentrate  
SC: Suspendable Concentrate  
ME: Microencapsulated Concentrate  
CS: Capsulated Suspension  
S: Solution

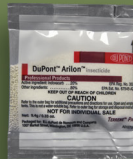
## DRY PRODUCTS



WP: Wettable Powder  
SP: Soluble Powder  
WG: Wettable Granule



D: Dust  
G: Granule



## BAITS



Liquid bait  
Gel bait  
Granular bait



Granular bait on a fire ant mound

Your job is to:

- ▶ Select the correct formulation for the job.
- ▶ Correctly handle and apply the formulation.