

Common Bacterial Blight of Snap Bean in Florida¹

Shouan Zhang, Geoffrey Meru, Aaron J. Palmateer, Ken Pernezny, and Jeffrey B. Jones²

Common bacterial blight, caused by *Xanthomonas campestris* pv. *phaseoli*, is the most frequently encountered bacterial disease of snap bean in Florida. This disease is a major problem of both snap beans and dry beans worldwide where beans are grown. Common bacterial blight is particularly severe in warm, humid climates with significantly heavy rainfall.

Two other bacterial diseases of beans, halo blight and brown spot, caused by *Pseudomonas syringae* pv. *phaseolicola* and *P. s.* pv. *syringae*, respectively, are well known in many bean production areas. These two diseases tend to cause problems in cool weather. Outbreaks of halo blight have recently become more frequent in south Florida.

Symptoms

Leaf symptoms of common bacterial blight first appear as small, water-soaked spots (Figure 1), usually more evident on the underside of the leaves. The lesions become larger and develop into dry, brown spots with distinct, rather narrow, yellow halos (Figure 2). Spots may coalesce and the yellowing of leaves becomes more general (Figure 3). Under severe infection, premature defoliation may occur.

Symptoms on pods are quite striking with development of large, water-soaked areas (Figure 4). These areas are more or less circular and slightly sunken. As symptoms progress, pod lesions can become distinctly brick-red in color and more deeply pitted (Figure 5). Under highly humid

conditions, pod lesions become covered with a yellowish bacterial ooze that can dry to a yellowish, crusty mass. Interestingly, in south Florida, significant pod symptoms can appear with little foliar damage.



Figure 1. Initial symptoms associated with common bacterial blight on underside of bean leaves consist of water-soaked lesions.

Credits: Courtesy Howard Schwartz

Cause and Disease Cycle

The causal bacterium of common bacterial blight, *Xanthomonas campestris* pv. *phaseoli*, is related to bacteria that cause devastating bacterial diseases of tomato, pepper, cabbage, citrus, lettuce, and many ornamental crops in Florida. *X. c.* pv. *phaseoli* has a limited host range, affecting snap bean, dry beans, scarlet runner bean, and a few other members of the legume family.

1. This document is PP-62, one of a series of the Plant Pathology Department, UF/IFAS Extension. Original publication date June 2002. Revised February 2009 and December 2021. Visit the EDIS website at <https://edis.ifas.ufl.edu> for the currently supported version of this publication.
2. Shouan Zhang, professor, Plant Pathology Department; Geoffrey Meru, assistant professor, Horticultural Sciences Department, UF/IFAS Tropical Research and Education Center; Aaron J. Palmateer, former associate professor, Plant Pathology Department, UF/IFAS TREC; Ken Pernezny, professor emeritus, Plant Pathology Department, UF/IFAS Everglades Research and Education Center; and Jeffrey B. Jones, professor, Plant Pathology Department; UF/IFAS Extension, Gainesville, FL 32611.

The Institute of Food and Agricultural Sciences (IFAS) is an Equal Opportunity Institution authorized to provide research, educational information and other services only to individuals and institutions that function with non-discrimination with respect to race, creed, color, religion, age, disability, sex, sexual orientation, marital status, national origin, political opinions or affiliations. For more information on obtaining other UF/IFAS Extension publications, contact your county's UF/IFAS Extension office. U.S. Department of Agriculture, UF/IFAS Extension Service, University of Florida, IFAS, Florida A & M University Cooperative Extension Program, and Boards of County Commissioners Cooperating. Nick T. Place, dean for UF/IFAS Extension.



Figure 2. More advanced lesion of common bacterial blight on top surface of bean leaf showing beginning of chlorotic (yellow) halo around lesion.

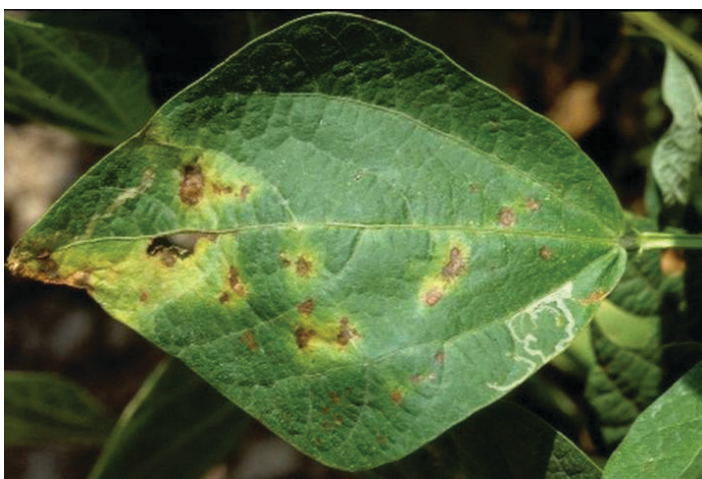


Figure 3. Numerous lesions of common bacterial blight on bean leaf.



Figure 4. Striking water-soaking symptoms of common bacterial blight on bean pods.

Contaminated seed is probably the major source of bacteria introduced into new fields of bean crops. Water-soaked lesions in young bean plants may be caused by cells of *X. c. pv. phaseoli* from seed as these cells invade emerging seedlings. The bacterial cells may colonize the surface of

shoot tissues, inciting more disease later, when favorable conditions are present.



Figure 5. Advanced symptoms on bean pods, with appearance of characteristic brick-red areas in center of lesions.

X. c. pv. phaseoli may survive in crop debris in the soil from season to season. However, such survival may not be realistic in south Florida, where the non-cropping period occurs in the hot, wet summer, and decomposition of crop debris is rapid and thorough. Significant populations of *X. c. pv. phaseoli* would hardly survive beyond six weeks under such conditions. However, *X. c. pv. phaseoli* can survive and multiply as an epiphyte or resident on the shoot surfaces of weed hosts, primarily members of the legume family. Alternative weed hosts, without showing symptoms, may also serve as sources of inoculum for this pathogen in Florida.

Common bacterial blight causes significant damage at warm temperatures (82°F–90°F for daytime highs). Rainfall or overhead irrigation (as from “rainbird” machinery in Homestead, FL) is usually favorable for disease development and progression in the field. Splashing water spreads the bacterial pathogen from diseased plants to healthy plants.

Cells of *X. c. pv. phaseoli* enter bean plants through openings, such as stomates (breathing pores) in leaves and other plant organs and through hydathodes (vein endings) at margins of leaves. Wounding of plants, such as that created by wind-blown soil particles, can create portals for ingress of blight bacteria. Bacteria are also readily transmitted mechanically, especially when field plants are wet. Particularly, insects such as whiteflies, leafminers, and beetles may transmit the bacterium from plant to plant. Cells of *X. c. pv. phaseoli* may invade and travel within the vascular (water-conducting) tissue of the bean plant.

Control

1. Plant pathogen-free seed, preferably from plants grown in dry environments, under furrow or similar irrigation.
2. AVOID MOVEMENT THROUGH AND WORK IN FIELDS WHEN PLANTS ARE WET. This simple cultural practice can greatly reduce blight disease development and spread.
3. Promptly destroy crops and disc in residues after harvest.
4. Control leguminous weeds that may serve as inoculum reservoirs. Insects should be properly controlled, particularly whiteflies.
5. In highly infected fields, consider using a 3 to 4-year crop rotation program with non-host crops to reduce pathogen population.
6. Spray fixed copper bactericides (fungicides) may provide some control once disease appears. For more on specific, legal uses of pesticides for control of common bacterial blight, consult current labels and the UF/IFAS, Plant Disease Management Guide https://edis.ifas.ufl.edu/topic_book_plant_disease_management_guide.