

Downy Mildew of Basil in South Florida¹

Shouan Zhang, Jaimin S. Patel, Zelalem Mersha, Pamela D. Roberts, and Richard Raid²

Introduction

Downy mildew of basil, caused by an oomycete, *Peronospora belbahrii*, is a new destructive disease that has spread to at least 42 states in the United States since its first detection in south Florida in 2007 (Roberts et al. 2009; Wyenandt et al. 2015). Downy mildew has also been reported in many other countries, such as Switzerland, Italy, France, Belgium, Israel, South Africa, Cameroon, Canada, Cuba, and in greenhouse-grown basil in Argentina (Belbahri et al. 2005; Cohen et al. 2013b; Garibaldi et al. 2004b, 2005; Martinez-de la Parte et al. 2010; McLeod et al. 2006; Nagy and Horvath 2011; Kanetis et al. 2014; Khateri et al. 2007; Petrzalova et al. 2014; Ronco et al. 2009; Safrankova and Holkova 2014; Saude et al. 2013). Farmers in Europe experienced the impact of the downy mildew disease earlier (2001), but reports of the disease have continued as recently as 2010 from Hungary. This implies the possibility that the disease may already exist in other countries but has neither been detected nor reported. Prior to these recent outbreaks, downy mildew had only been reported on basil in Uganda in 1933 (Hansford 1933).

Downy mildew was also observed on ornamental plants related to basil, particularly coleus (*Solenostemon* spp.) and salvia (*Salvia* spp.), which belong to the Lamiaceae family that includes basil (*Ocimum* spp.), mints (*Menta* spp.), sages (*Salvia* spp.) and other aromatics (Ito et al. 2015; Thines et al. 2009). Recently, in Japan, the oomycete pathogen that causes downy mildew on coleus has been identified

as *Peronospora belbahrii* (Ito et al. 2015). However, there are many basil-related ornamentals that are also hosts to the downy mildew pathogen, affecting basil grown for use as an herb. Although sporangioophores and sporangia of the basil downy mildew pathogen (*P. belbahrii*) are capable of dispersing long distances, it is likely that *P. belbahrii* is able to move between geographically separated areas via contaminated seed rather than via spores. The pathogen found in Florida has been shown to be genetically the same as that in Switzerland (Roberts et al. 2009).

Symptoms

Symptoms of downy mildew initially appear as the yellowing of basil leaves (Figure 1). Upon close observation of individual leaves, an irregular-shaped chlorosis or typical vein-bounded symptoms are clearly discernible when contrasted to the green foliage of healthy leaves (Figure 2). Growers generally do not realize their basil plants are infected with downy mildew disease because the most noticeable symptom on affected basil is leaf yellowing (Figure 1), which is phenotypically similar to the result of nutrition deficiency. The discolored area may cover most of the leaf surface. On the underside of leaves, a gray, fuzzy growth may be apparent upon visual inspection (Figure 3). Under high humidity, the chlorotic areas on the leaf rapidly turn from dark brown to black. Sporangia, the reproductive structures of the pathogen, are easily detected under magnification and are a diagnostic characteristic of this disease (Figure 5). Sporulation on the abaxial (bottom)

1. This document is PP271, one of a series of the Plant Pathology Department, UF/IFAS Extension. Original publication date September 2009. Revised December 2015. Reviewed November 2019. Visit the EDIS website at <https://edis.ifas.ufl.edu> for the currently supported version of this publication.
2. Shouan Zhang, associate professor; Jaimin S. Patel, postdoctoral research associate; Zelalem Mersha, former postdoctoral research associate, Department of Plant Pathology, UF/IFAS Tropical Research and Education Center; Pamela D. Roberts, professor, Department of Plant Pathology, UF/IFAS Southwest Florida REC; and Richard Raid, professor, Department of Plant Pathology, Everglades REC; UF/IFAS Extension, Gainesville, FL 32611.

The Institute of Food and Agricultural Sciences (IFAS) is an Equal Opportunity Institution authorized to provide research, educational information and other services only to individuals and institutions that function with non-discrimination with respect to race, creed, color, religion, age, disability, sex, sexual orientation, marital status, national origin, political opinions or affiliations. For more information on obtaining other UF/IFAS Extension publications, contact your county's UF/IFAS Extension office. U.S. Department of Agriculture, UF/IFAS Extension Service, University of Florida, IFAS, Florida A & M University Cooperative Extension Program, and Boards of County Commissioners Cooperating. Nick T. Place, dean for UF/IFAS Extension.

leaf surface and chlorosis of the adaxial (upper) leaf surface make basil leaves unacceptable for the marketplace.



Figure 1. Symptoms of downy mildew on field-grown basil (top) compared with healthy basil plants (bottom).

Credits: Zelalem Mersha, UF/IFAS

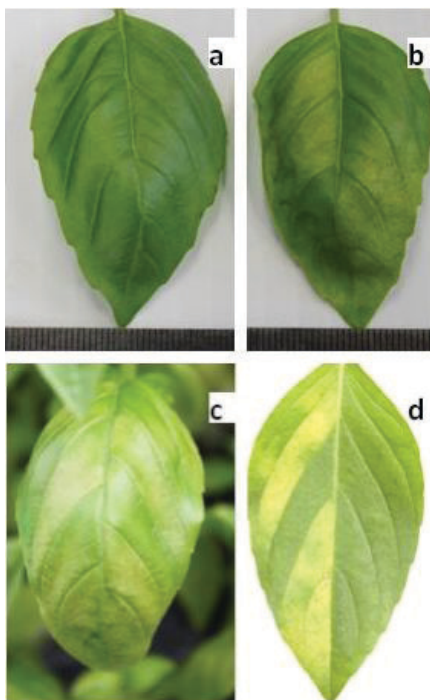


Figure 2. Top view of basil leaf a) without any disease and b-d) exhibiting chlorosis and vein-bounded yellowing of downy mildew.

Credits: Zelalem Mersha, UF/IFAS



Figure 3. Sporulation evident on underside of the basil leaf.

Credits: Zelalem Mersha, UF/IFAS

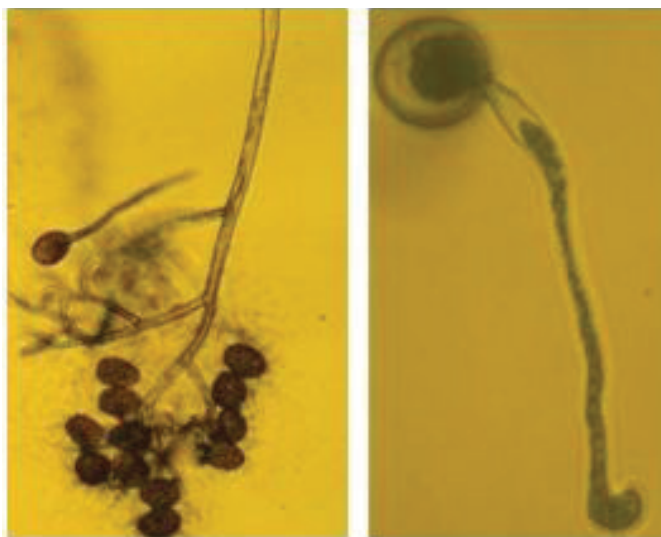


Figure 4. Microscopic mount of a) down-hanging aseptate sporangiophore of *Peronospora belbahrii* and b) germinating sporangium of the basil downy mildew pathogen.

Credits: Zelalem Mersha, UF/IFAS

Control

A few fungicides are currently labeled for downy mildew control on basil. Some phosphorous acid fungicides are effective against downy mildew under herbs on the current label. These fungicides were effective in fungicide efficacy experiments with applications started before or after initial symptoms were found. Actinovate AG is an OMRI-listed fungicide that is labeled for use on herbs and for suppressing foliar diseases, including downy mildew. Other fungicides are expected to be labeled for this use in the future.

Besides those fungicides that are specifically labeled for this disease, some fungicides that are labeled for basil may also be useful in management of downy mildew in basil. Revus and Ranman are among other fungicides that effectively control downy mildew of basil. Applying labelled fungicides

before appearance of downy mildew as a preventative measure is important for successful control of downy mildew of basil. Young basil plants are more susceptible than old basil plants (Patel et al. 2014), and therefore plants should be protected starting from their emergence from the ground. Reducing the period of leaf wetness by avoiding overhead watering may be helpful. The sporulation of basil downy mildew pathogen can also be suppressed if basil plants are illuminated during the night (Cohen et al. 2013a). Heavily infected plants should be discarded. If possible, isolate new plantings to reduce inoculum spread from older plantings. Consult the University of Florida IFAS Plant Disease Management Guide and current labels for specific and current fungicide recommendations.

References

- Belbahri, L., G. Calmin, J. Pawlowski, and F. Lefort. 2005. "Phylogenetic analysis and real time PCR detection of a presumably undescribed *Peronospora* species on sweet basil and sage." *Mycol. Res.* 109(11):1276-1287.
- Cohen, Y., M. Vaknin, Y. Ben-Naim, and A.E. Rubin. 2013a. "Light suppresses sporulation and epidemics of *Peronospora belbahrii*." *PLoS ONE* 8:e81282.
- Cohen, Y., M. Vaknin, Y. Ben-Naim, A.E. Rubin, M. Galperin, D. Silverman, S. Bitton, and U. Adler. 2013b. "First Report of the Occurrence and Resistance to Mefenoxam of *Peronospora belbahrii*, Causal Agent of Downy Mildew of Basil (*Ocimum basilicum*) in Israel." *Plant Dis.* 97(5):692.
- Garibaldi, A., A. Minuto, and M.L. Gullino. 2005. "First report of downy mildew caused by *Peronospora* sp. on basil (*Ocimum basilicum*) in France." *Plant Dis.* 89(6):683.
- Garibaldi, A., G. Minuto, and M.L. Gullino. 2004. "First report of downy mildew on basil (*Ocimum basilicum*) in Italy." *Plant Dis.* 88(3):312.
- Hansford, C. G. 1933. "Annual report of the mycologist." *Rev. Appl. Mycol.* 12:421-422
- Ito, Y., T. Takeuchi, Y. Matsushita, Y. Chikuo, and M. Satou. 2015. "Downy mildew of coleus caused by *Peronospora belbahrii* in Japan." *J. Gen Plant Pathol.* 81:328-830.
- Kanetis, L., A. Vasiliou, G. Neophytou, S. Samouel, and D. Tsaltas. 2014. "First report of downy mildew caused by *Peronospora belbahrii* on sweet basil (*Ocimum basilicum*) in Cyprus." *Plant Dis.* 98(2):283.
- Khateri, H., G. Calmin, N. Moarrefzadeh, L. Belbahri, and F. Lefort. 2007. "First report of downy mildew caused by *Peronospora* sp. on basil in northern Iran." *J. Plant Pathol.* 89:S70.
- Martinez-de la Parte, E., L. Perez-Vicente, B. Bernal, and D. Garcia. 2010. "First report of *Peronospora* sp. on sweet basil (*Ocimum basilicum*) in Cuba." *Plant Pathol.* 59:800.
- McLeod, A., S. Coertze, and L. Mostert. 2006. "First report of a *Peronospora* species on sweet basil in South Africa." *Plant Dis.* 90(8):1115.
- Nagy, G., and A. Horvath. 2011. "Occurrence of downy mildew caused by *Peronospora belbahrii* on sweet basil in Hungary." *Plant Dis.* 95(8):1034.
- Patel, J. S., S. Zhang, and M.I. Costa de Novaes. 2014. "Effect of Plant Age and Acibenzolar-S-methyl on Development of Downy Mildew of Basil." *HortScience* 49(11):1392-1396.
- Petrzelova, I., M. Kitner, I. Dolezalova, V. Ondrej, and A. Lebeda. 2014. "First report of basil downy mildew caused by *Peronospora belbahrii* in the Czech Republic." *Plant Dis.* 99(3):418.
- Roberts, P.D., R.N. Raid, P.F. Harmon, S.A. Jordan, A.J. Palmateer. 2009. "First report of downy mildew caused by a *Peronospora* sp. on basil in Florida and the United States." *Plant Dis.* 93, 199.
- Ronco, L., C. Rollán, Y.J. Choi, and D.H. Shin. 2009. "Downy mildew of sweet basil (*Ocimum basilicum*) caused by *Peronospora* sp. in Argentina." *Plant Pathol.* 58(2):395.
- Safrankova, I. and L. Holkova. 2014. "The first report of downy mildew caused by *Peronospora belbahrii* on sweet basil in greenhouses in the Czech Republic." *Plant Dis.* 98(11):1579.
- Saude, C., S. Westerveld, and M. Filotas. 2013. "First report of downy mildew caused by *Peronospora belbahrii* on basil (*Ocimum* spp.) in Ontario." *Plant Dis.* 97:1248.
- Thines, M., S. Telle, S. Ploch, and F. Rung. 2009. "Identity of the downy mildew pathogens of basil, coleus, and sage with implications for quarantine measures." *Mycol. Res.* 113(5):532-540.