

# *Halesia carolina* 'Rosea': 'Rosea' Carolina Silverbell<sup>1</sup>

Edward F. Gilman, Dennis G. Watson, Ryan W. Klein and Deborah R. Hilbert<sup>2</sup>

## Introduction

A North American native tree, Carolina silverbell grows into a 20- to 40-foot-tall tree with a 15- to 30-foot-spread into a pyramidal silhouette. The 2- to 4-inch-long leaves turn yellow in fall and are among the first to drop in autumn. The tree prefers sandy loam and begins blooming when only 10 to 12 feet tall. The pink, bell-shaped, showy blossoms are borne in 2- to 5-inch-long clusters. Flowering occurs along last year's branches in mid-May on the previous season's wood. Because the flowers point downward, they are partially hidden by the foliage and best viewed from below. Other ornamental features are the yellow fall color and the bark, which peels off in large, flat scales. The pale-yellow fruits are quite attractive as they hang down from last year's branches. Carolina silverbell may transplant poorly in the fall.

## General Information

**Scientific name:** *Halesia carolina*

**Pronunciation:** hal-EE-zhee-uh kair-oh-LYE-nuh

**Common name(s):** 'Rosea' Carolina silverbell

**Family:** *Styracaceae*

**USDA hardiness zones:** 5A through 8B (Figure 2)

**Origin:** native to North America

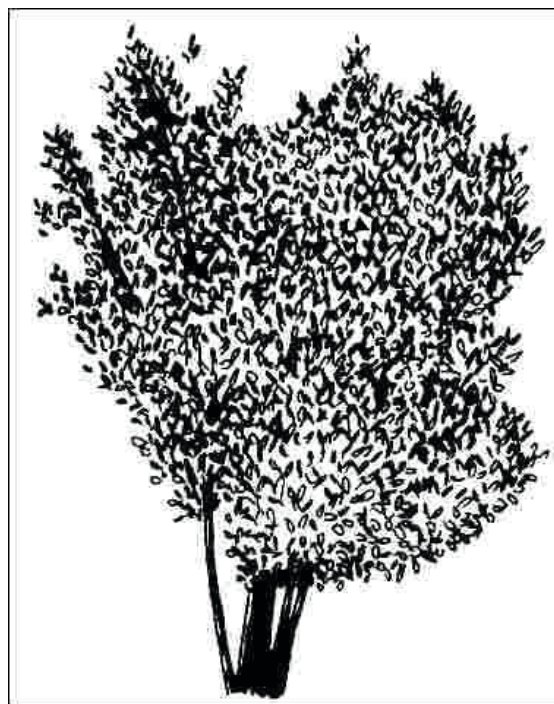


Figure 1. Middle-aged *Halesia carolina* 'Rosea': 'Rosea' Carolina silverbell.

Credits: UF/IFAS

**Invasive potential:** native cultivar

**Uses:** specimen; street without sidewalk; deck or patio; tree lawn 3–4 feet wide; tree lawn 4–6 feet wide; tree lawn > 6 ft wide; container or planter

1. This document is ENH448, one of a series of the Department of Agricultural and Biological Engineering, UF/IFAS Extension. Original publication date November 1993. Revised December 2006. and March 2024. Visit the EDIS website at <https://edis.ifas.ufl.edu> for the currently supported version of this publication.
2. Edward F. Gilman, professor emeritus; Dennis G. Watson, former associate professor, Department of Agricultural and Biological Engineering; Ryan W. Klein, assistant professor, arboriculture; and Deborah R. Hilbert, UF/IFAS Gulf Coast Research and Education Center; Department of Environmental Horticulture; UF/IFAS Extension, Gainesville, FL 32611.

The Institute of Food and Agricultural Sciences (IFAS) is an Equal Opportunity Institution authorized to provide research, educational information and other services only to individuals and institutions that function with non-discrimination with respect to race, creed, color, religion, age, disability, sex, sexual orientation, marital status, national origin, political opinions or affiliations. For more information on obtaining other UF/IFAS Extension publications, contact your county's UF/IFAS Extension office. U.S. Department of Agriculture, UF/IFAS Extension Service, University of Florida, IFAS, Florida A & M University Cooperative Extension Program, and Boards of County Commissioners Cooperating. Andra Johnson, dean for UF/IFAS Extension.

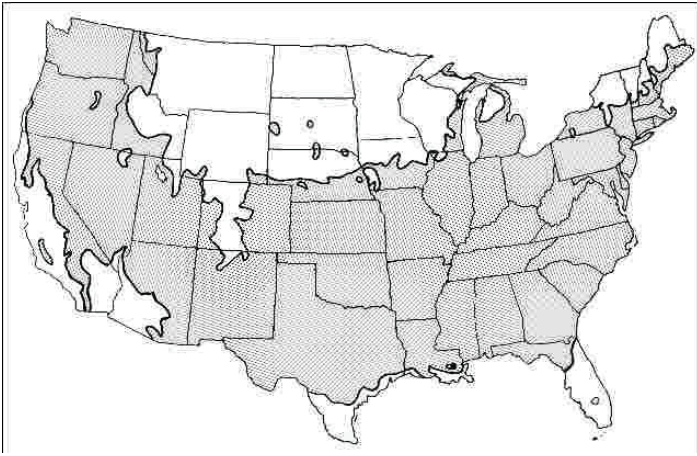


Figure 2. Range.  
Credits: UF/IFAS

## Description

**Height:** 20 to 40 feet

**Spread:** 15 to 30 feet

**Crown uniformity:** irregular

**Crown shape:** round, upright/erect, vase

**Crown density:** moderate

**Growth rate:** moderate

**Texture:** fine

## Foliage

**Leaf arrangement:** alternate (Figure 3)

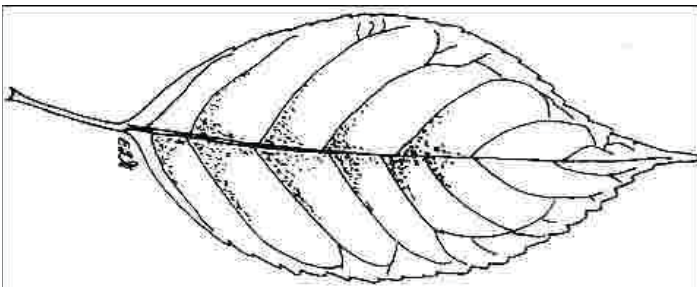


Figure 3. Foliage.  
Credits: UF/IFAS

**Leaf type:** simple

**Leaf margin:** serrulate

**Leaf shape:** oblong, elliptic (oval), ovate

**Leaf venation:** pinnate

**Leaf type and persistence:** deciduous

**Leaf blade length:** 2 to 4 inches, 4 to 8 inches

**Leaf color:** green

**Fall color:** yellow

**Fall characteristic:** showy

## Flower

**Flower color:** pink

**Flower characteristics:** very showy

## Fruit

**Fruit shape:** oval

**Fruit length:** 1 to 3 inches

**Fruit covering:** dry or hard

**Fruit color:** yellow

**Fruit characteristics:** does not attract wildlife; showy; fruit/leaves not a litter problem

## Trunk and Branches

**Trunk/bark/branches:** branches droop; showy; typically one trunk; thorns

**Pruning requirement:** little required

**Breakage:** resistant

**Current year twig color:** brown

**Current year twig thickness:** thin

**Wood specific gravity:** unknown

## Culture

**Light requirement:** full sun, partial sun, or partial shade

**Soil tolerances:** clay; sand; loam; acidic; slightly alkaline; well-drained; occasionally wet

**Drought tolerance:** moderate

**Aerosol salt tolerance:** low

## Other

**Roots:** not a problem

**Winter interest:** yes

**Outstanding tree:** yes

**Ozone sensitivity:** unknown

**Verticillium wilt susceptibility:** unknown

**Pest resistance:** free of serious pests and diseases

## Use and Management

This tree is interesting all year long, with attractive medium green foliage, pretty flowers, showy fruits, and exfoliating bark. It branches low to the ground, making a nice lawn or specimen tree and when pruned to one central leader can be used as a street tree in residential areas. The bark shows off nicely with foliage removed from the lower branches, and multi-stemmed specimens come-to-life when lit from below at nighttime. They would make a perfect small-sized tree for planting near a deck or patio.

An understory tree best suited for a partially shaded or shaded location, Silverbell prefers moist, fertile soil with an accumulation of leaf litter and/or mulch. The tree grows best if roots are not confined to a small area and are allowed to explore a large soil area. Water during a drought and avoid compacted soil.

Propagation is by seeds sown as soon as ripe or stratified, and by layering, root cuttings, and greenwood cuttings. Small trees and seedlings transplant easily.

## Pests and Diseases

No pests or diseases are of major concern.