

Nematode (Roundworm) Infections in Fish¹

Roy P. E. Yanong²

Introduction

Nematodes, or roundworms, infect many different species of aquacultured and wild fish. Small numbers of nematodes often occur in healthy fish, but high numbers cause illness or even death. In aquaculture systems, brood stock infected with a small number of nematodes may not even show signs of illness, but they often have reduced reproductive capacity. On the other hand, juvenile fish infected by small numbers of nematodes are more likely to show signs of illness and also have reduced growth rates.

In aquaculture situations, fish become infected with nematodes if they are fed live foods containing infective life stages or if they are raised in culture settings that promote the growth of other animals that carry the infective stages of the nematode (vector or paratenic host) or allow nematodes to complete their life cycle (intermediate hosts). Some nematodes can be transmitted directly from fish to fish.

Adult nematodes are typically found in fish digestive tracts. However, depending upon the species of nematode and the species of infected fish, adult and other life stages of nematodes can be found in almost any part of the fish, including the coelomic (body) cavity, internal organs, the swim bladder,

deeper layers of the skin or fins, and external muscle layers.

Prevention, proper identification, and correct therapy for treatable infestations dramatically improve the health and productivity of affected fish.

Identification

Identification is best done with a microscope. Nematodes are smooth, cylindrical, relatively long worms (Figure 1), which distinguishes them from the flatter, segmented tapeworms (Figure 2) and from the stouter and shorter monogenes (flukes) (Figure 3). Pentastomids (Figure 4) are another group of parasites that can be confused with nematodes, but they are considerably more stout and have more visible segmentation. Acanthocephalans (Figure 5) are also somewhat similar in appearance, but they have a characteristic "thorny head" - their head region is armed and encircled with numerous rows of hooks.

Disease in Fish

The severity of disease in fish will vary with the life stage, species, and number of nematodes present; the age and species of infected fish; and the sites of infection. Even though adult nematodes are typically

1. This document is Circular 91, one of a series from the Department of Fisheries and Aquatic Sciences, Florida Cooperative Extension Service, Institute of Food and Agricultural Sciences, University of Florida. First Published: December 2002. Major revision: August 2006.
2. Roy P.E. Yanong, Associate Professor, Tropical Aquaculture Laboratory, Department of Fisheries and Aquatic Sciences, Florida Cooperative Extension Service, Institute of Food and Agricultural Sciences, University of Florida, Ruskin, FL 33570-3434.

The Institute of Food and Agricultural Sciences (IFAS) is an Equal Opportunity Institution authorized to provide research, educational information and other services only to individuals and institutions that function with non-discrimination with respect to race, creed, color, religion, age, disability, sex, sexual orientation, marital status, national origin, political opinions or affiliations. U.S. Department of Agriculture, Cooperative Extension Service, University of Florida, IFAS, Florida A. & M. University Cooperative Extension Program, and Boards of County Commissioners Cooperating. Larry Arrington, Dean



Figure 1. Photomicrograph of a *Capillaria* nematode showing typical nematode shape. Credits: Tropical Aquaculture Laboratory; University of Florida



Figure 4. Photomicrograph of pentastomes showing typical shape. Credits: Tropical Aquaculture Laboratory; University of Florida

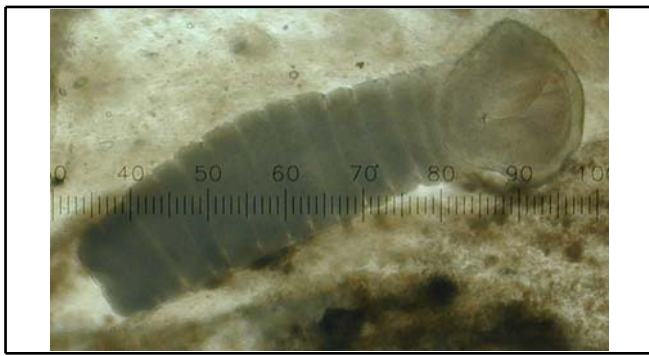


Figure 2. Photomicrograph of a tapeworm showing typical segmentation. Credits: Tropical Aquaculture Laboratory; University of Florida

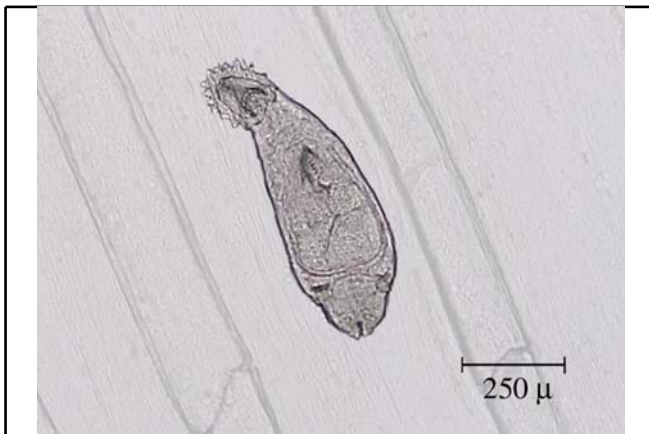


Figure 3. Photomicrograph of a monogene (fluke) showing typical shape. Credits: Tropical Aquaculture Laboratory; University of Florida

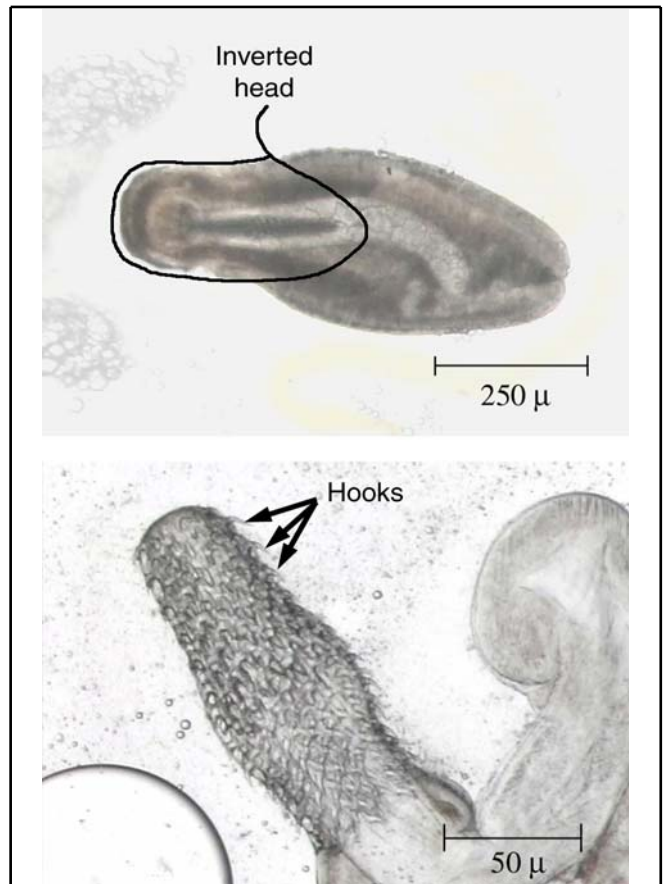


Figure 5. Photomicrograph showing acanthocephalan with head inverted (top) and head everted showing typical "thorny head" with hooks (bottom). Credits: Tropical Aquaculture Laboratory; University of Florida

found in fish intestinal tracts, adult and other life stages can be found in almost any organ, as stated earlier, but they are, secondarily, most commonly present in muscle, the liver, and tissues surrounding the internal organs. Visible signs of infection may include hemorrhaging, external lumps or nodules,

inflammation, and necrosis (presence of dead and dying tissue) and cysts or granulomas. A granuloma is a reaction by immune cells in which the cells try to "wall off" some foreign body--in this case, the worm. Granulomas formed around worms can look like little

brown "rock-like" areas in the shape of the worm, but they will be surrounded by a distinct clear area at their very edge. Adult nematodes in the intestinal tract damage its lining and rob the fish of nutrients, causing a "wasting" effect.

During their development, many species of nematodes migrate within the body of a fish causing "worm tracks" (evidence of nematode movement through a fish's body), which are seen as "tunnels" in the tissue. Inflammation around these "worm tracks" may also be present. Extensive migration by large numbers of nematodes may cause significant physical damage to a fish. Large larval stages of some nematode species, including *Eustrongylides* species, may cause physical pressure on organs and abdominal distension.

Juvenile fish with nematode infections are often more severely affected than adults, displaying reduced growth, wasting, or more obvious disease signs and mortality. However, adult fish with significant parasite loads also exhibit wasting and reduced reproductive capacity.

Life Cycles

Life cycles differ depending upon the species of nematode. Typical life cycles are summarized in Figure 6, Figure 7, and Figure 8. Organisms that contain the reproductive adult stages of nematodes are known as **final** or **definitive** hosts. Organisms that are required for the completion of a nematode life cycle but do not contain the final reproductive adult stage are known as **intermediate** hosts.

There are two major categories of nematode life cycles - DIRECT and INDIRECT.

If the nematode has a DIRECT life cycle (Figure 6), then it does not need an intermediate host and infection can spread directly from one fish to another by ingestion of eggs or larvae.

If the nematode has an INDIRECT life cycle (Figures 7 and Figure 8), the eggs or larvae are excreted into the water and, during development, immature stages pass through at least two different types of organisms, one of which may be a fish. Depending upon the role of the fish, indirect life

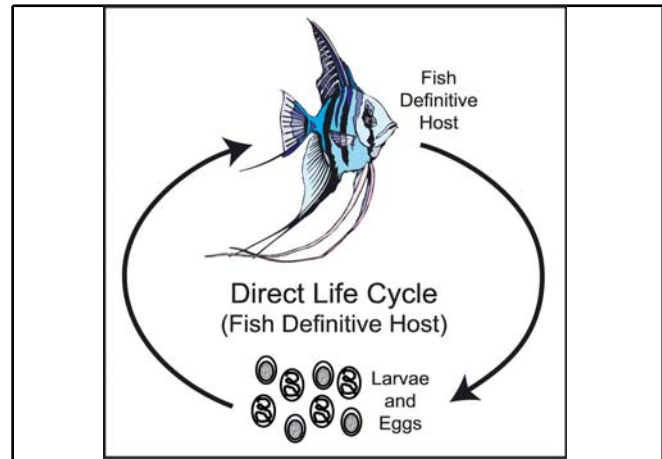


Figure 6. Direct life cycle. Nematode can infect fish directly without the need for an intermediate host. Credits: Tropical Aquaculture Laboratory; University of Florida

cycles can also be subcategorized by whether the fish is (i) the definitive (final) host or (ii) an intermediate host.

i) **Indirect life cycle where the fish is the final (definitive) host** (Figure 7) If the fish is the definitive or final host, then the nematode will enter another organism - usually an aquatic invertebrate such as a copepod, side swimmer (such as *Gammarus* spp.), tubifex worm, or insect larva - in which it will further develop prior to being eaten by a fish. After being eaten by the correct species of fish, some species of nematode reach sexual maturity and reproduce in these fish. In such a case, the fish are considered the "definitive" or "final" host for these nematode species.

ii) **Indirect life cycle where the fish is an intermediate host** (Figure 8) Nematodes that have this type of life cycle use fish species as intermediate hosts only. The final host (which contains the reproductive adult stage of the nematode) may be a piscivorous (fish-eating) fish, bird or mammal.

Some nematodes have the ability to survive in "alternative" organisms, known as "paratenic" hosts. These hosts are not required for completion of the life cycle but they can contain infective nematode life stages and be a source of infection (Figure 9). They can be fish, worms or other aquatic organisms that eat the nematode eggs or larvae.

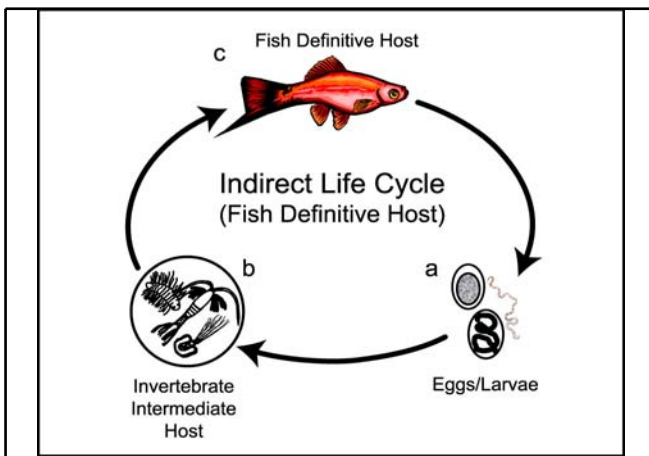


Figure 7. Indirect life cycle where the fish is the final (definitive) host. The nematode eggs/larvae (a) enter an aquatic invertebrate intermediate host (b), such as a copepod, tubifex worm, or insect larva, prior to being eaten by or entering the final host fish (c). Credits: Tropical Aquaculture Laboratory; University of Florida

stunted (unusually small). Infections by nematodes in the skin or muscle may be visible or be suspected if lumps or grub-like growths are seen. As described in the section “Disease in Fish,” fish infected with *Eustrongylides* species often have grossly distended abdomens, although they appear and behave as normal. Nematodes may also infect other tissues and organs in the body resulting in signs related to the organ system affected and the degree of damage.

Since other diseases can create the conditions described above, positive identification of infection by nematodes is important. This identification can be made by complete necropsy of a representative sample of the affected population or by biopsy of external lesions.

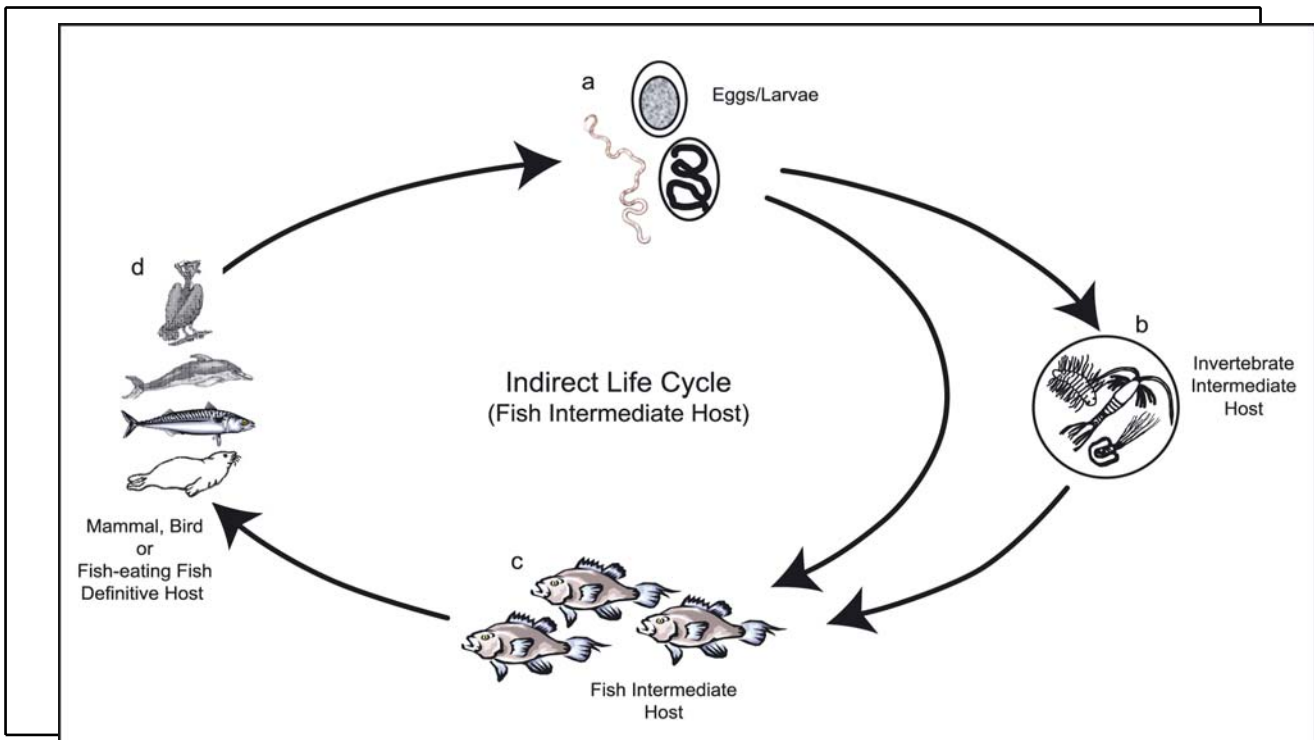


Figure 8. Indirect life cycle where the fish is an intermediate host. The nematode eggs/larvae (a) enter an invertebrate intermediate host (b) OR a fish intermediate host (c) prior to being eaten by or entering the final host, a fish-eating mammal, bird, or fish (d). Credits: Tropical Aquaculture Laboratory; University of Florida

General Notes

Diagnosis

Intestinal nematode infections should be suspected if fish eat well but are thin ("wasted"), if brood stock production declines over time, or if juveniles grow more slowly than expected or are

An alternative to necropsy for identification of intestinal infections is collection of fresh fecal samples followed by microscopic evaluation for presence of nematode eggs, larvae, or adults.

Feces to be examined must be absolutely fresh, since feces that have been in a tank for even just a few minutes may contain free-living nematodes that are

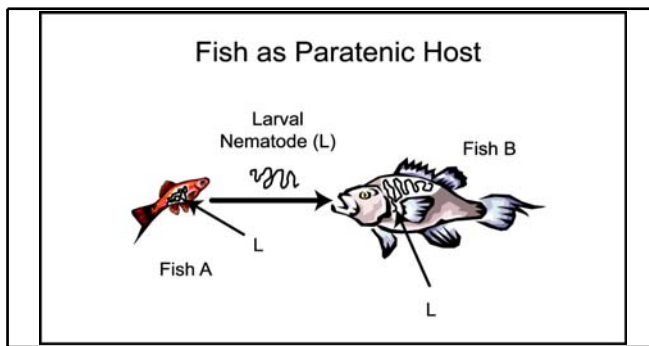


Figure 9. Paratenic host. Fish A contains a larval nematode (L). When Fish A is eaten by Fish B, larval nematode (L) migrates out of Fish A into Fish B's body. Fish B can be considered a paratenic host because it is not required for completion of the nematode life cycle, but can still serve as a host. Credits: Tropical Aquaculture Laboratory; University of Florida

not parasitic and are not a concern for fish health. These free-living nematodes are often difficult to distinguish from parasitic nematodes. If possible, multiple fecal samples from the same group of fish should be taken over time. This increases the likelihood of identifying early nematode life stages.

Even though periodic checks of brood stock and juveniles can be made by examining fresh fecal matter for the presence of nematode eggs or larvae, the sacrifice and necropsy of a small representative group of fish is the most informative method. For pets or valuable individuals, examination of fecal material may be the best option for diagnosis of infection.

Treatment

Prior to administration of deworming medications (anthelmintic), the problem should be properly diagnosed by a fish health specialist. After verification of infection, alternative therapies can be discussed. Food fish and game fish producers will have more limited treatment options than those available to ornamental fish producers. There are no Food and Drug Administration (FDA)-approved drugs for use in the treatment of nematode infections in baitfish, ornamental fish, or food fish. The FDA has elected to use regulatory discretion to keep products intended for the treatment of aquarium (ornamental) fish available, so these products should be used judiciously, and after proper diagnostics have been performed.

For intestinal nematode infections of ornamental fish, several anthelmintics (dewormers) are available. Two effective and commonly used dewormers are fenbendazole and levamisole. Fenbendazole can only be used as a feed additive at the rate of 1.14 grams per pound of food fed for three days, with a repeat treatment in two to three weeks. Levamisole can be used both in the feed and as a bath treatment. One effective oral dose is 1.8 grams of levamisole per pound of food fed once a week for three weeks. One effective bath treatment dose is 2 ppm (mg/liter) levamisole for 24 hours, with a repeat treatment in two to three weeks. However, be sure to consult with a fish health specialist before commencing any treatment and always follow their recommendations.

Control of nematodes that infect areas of the fish other than the gastrointestinal tract is more problematic. For example, *Eustrongylides* species are typically found encysted within the body cavity outside of the intestinal tract, so common dewormers are ineffective. In fact, surgical removal is the only way to rid fish of internal worms that are not found in the intestine. Fish that contain nematode larvae in their muscles or external areas may be treated by surgical removal of the larvae. This approach is not practical in aquaculture production, and sites of surgery may be unsightly or become infected. In general, affected fish must be culled.

Prevention

Prevention is always the best option, especially against those species of nematode that infect areas other than the gastrointestinal tracts of fish. Ponds that have not been cleaned or sterilized prior to restocking are at greater risk of harboring large numbers of intermediate hosts (e.g., tubifex worms). Cleaning and sterilizing ponds is an effective way of reducing the numbers of the intermediate hosts of some nematode species. Preventive medicine can also help the producer avoid illness and production declines.

Preventive medicine includes periodic checks of susceptible juveniles or brood stock (by regular fecal examinations and necropsies of small numbers of fish) and reducing the presence of intermediate hosts,

including fish-eating birds and tubifex worms, as mentioned above.

Producers who use live side swimmers (such as *Gammarus* spp.), insect larvae, tubifex worms, or copepods as food must also be aware that they may be, inadvertently, introducing nematode larvae into their stocks. So, even if these producers obtain their live food from a source that guarantees it is not grown in water containing fish, accessed by fish-eating birds, or containing other hosts (all sources of possible infection), it is still important for these producers to practice preventative techniques, such as fecal checks, pond sterilization, and necropsies on a regular basis.

Representative Nematode (Roundworm) Species

Capillaria Species

The Capillarids as a group can infect a wide variety of fish hosts. *Capillaria pterophylli* is a relatively common nematode seen in the intestines of cichlids (including angelfish and discus). *Capillaria* species are also seen in cyprinids, gouramis, tetras and other species of fish. *Capillaria* females are easily identified when they are carrying the brown, barrel-shaped eggs with a plug-like structure on each end (Figure 10).

Capillaria species have direct life cycles, and can spread from one fish to another by ingestion of infective larvae. It may take *Capillaria pterophylli* eggs up to three weeks at 68-73°F (less time at warmer temperatures) before they contain embryos developed enough to be infective when ingested by a fish. The length of time required from infection until the mature adult parasites are producing eggs or larvae is approximately three months at these temperatures. Even though *Capillaria* species have direct life cycles, a tubifex worm may act as a paratenic (alternative) host and "carry" infective stages of *Capillaria* to the fish that consumes them.

Diagnosis

Capillaria species are relatively transparent and, if only immature or male nematodes are present, they may be easily missed during necropsy. However,

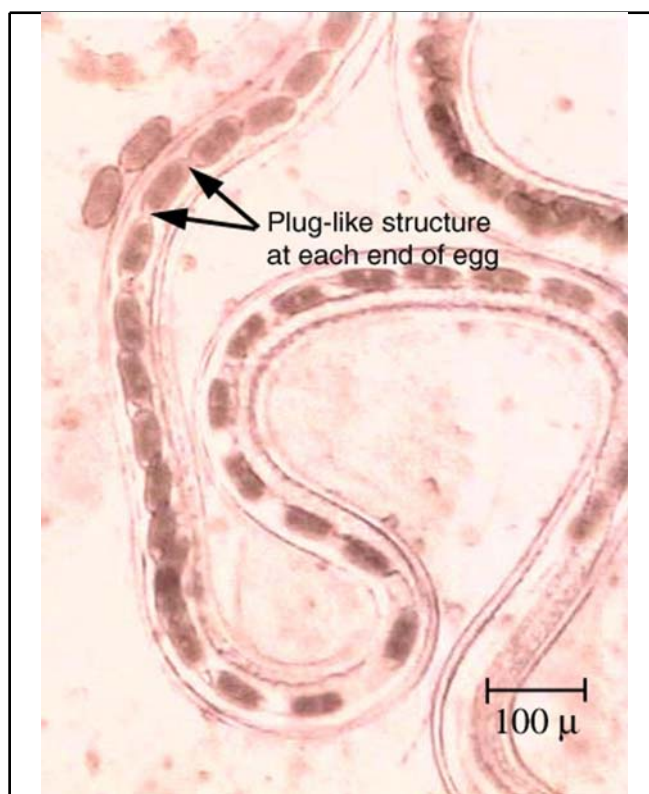


Figure 10. *Capillaria* female showing eggs with plug-like structures at each end. Credits: Tropical Aquaculture Laboratory; University of Florida

Capillarid infection is relatively easy to diagnose when females containing the typical barrel-shaped eggs with a polar plug on each end (opercula) or eggs alone are present in the intestinal tract.

Treatment

Capillarid infections can be treated with dewormers such as levamisole or fenbendazole (see "General Treatment Notes"). To avoid reinfection, organic debris and feces should be removed as often as possible, especially following deworming treatment.

Prevention

Brood stock should be evaluated for the presence of nematodes prior to use and periodically throughout the breeding period. Proper sanitation will help prevent the spread of nematodes and reduce infection loads. Live foods, such as oligochaete worms (e.g., tubifex worms), may act as carriers, and their use should be avoided if possible.

***Eustrongylides* Species**

Eustrongylides species can be found in muscle, “free” within the body cavity, or encapsulated on the liver and other organs, but they are found outside the intestinal tract of fish. Eustrongylid nematodes can affect a number of different species, including yellow perch, pumpkinseed, mummichug, guppies, gar, danios, and angelfish. Affected fish typically have bloated abdomens (dropsy), as the nematodes frequently migrate into the body cavity from the gut and can be quite large.

Eustrongylids are typically very long, coiled, and red (due to presence of hemoglobin), and an infected fish often has more than one nematode in its body cavity (Figure 11). If feeder fish containing *Eustrongylides* species are fed to other fish, the nematodes can migrate out of the feeder fish and into the muscles or other organs of the fish that just consumed them. After migrating into the muscle, this nematode can cause lesions that look superficially similar to a grub.



Figure 11. Several *Eustrongylides* nematodes, exhibiting typical coiling (and red coloration when viewed on the EDIS web site or printed in color), from the body cavity of a fish. (Ruler shows measurements in centimeters on the top and inches on the bottom.) Credits: Tropical Aquaculture Laboratory; University of Florida

Eustrongylides species have complex, indirect life cycles. Adult *Eustrongylides tubifex* and other Eustrongylid nematodes are found in fish-eating birds. The eggs are shed by the birds into ponds, where they develop into a life stage that is consumed by an oligochaete worm, such as the tubifex worm. Within these tubifex worms, the nematodes develop

still further into a third larval stage, known as an "L3", which is the life stage of the *Eustrongylides* group that can infect fish when eaten. Once the tubifex worm containing the L3 stages is eaten by a fish and digested, the nematodes migrate (within the fish) into the body cavity and, frequently, over the external surface of internal organs such as the liver. Some recent studies, however, suggest that *Eustrongylides ignotus*, commonly found in mosquitofish and which is a close relative of *Eustrongylides tubifex*, may be able to complete its life cycle without the need for a tubificid worm (Coyner, Spalding, and Forrester 2003).

The eggs of all *Eustrongylides* species are very tough and can easily survive for some time in fish ponds. At about 77°F, it can take anywhere from three months to four and one-half months from the time the bird infects the pond with *Eustrongylides* eggs until the time fish become infected. This means that, after sterilization of ponds, if fish-eating birds do infect the ponds with *Eustrongylides* eggs, the producer may not see a problem until harvesting the fish, 3-4 months later, as this is approximately the time required for the eggs to hatch and become the L3 stage which infects the fish. After this 3-4 month period, fish raised in ponds with a population of fish-eating birds have an even greater chance of becoming infected as the number of nematodes increases over time.

Diagnosis

As *Eustrongylides* species infect areas outside the gastrointestinal tracts of fish, necropsy of a small group of affected fish is the only sure method to identify them. During necropsy *Eustrongylides* species, such as *E. tubifex*, are easily identified from their location in the fish (encysted in mesenteries of the body cavity or in muscle), their red coloration, and their relatively long bodies (11-83 mm); however, there are other nematodes that may appear similar, so positive identification will require examination by a veterinarian, other fish health specialist, or parasitologist.

Treatment

Other than mechanical removal, there is no effective treatment for these nematodes due to the location of the larvae within the coelomic cavity or in the muscle. Culling affected fish is recommended.

Prevention

Removal of the final host (fish-eating birds) or any intermediate hosts (tubificid worms or other oligochaetes) will help reduce the infection rate. Sanitation of ponds or tanks will help remove any intermediate hosts. Sanitation of ponds at the very minimum of once or twice a year is recommended.

Camallanus Species

Camallanus species (Figure 12) infect the gastrointestinal tract of cichlids, live-bearers (including guppies and swordtails), and other species of freshwater fish. Usually, the first evidence of infection is a red, worm-like animal protruding from the anus of a fish.

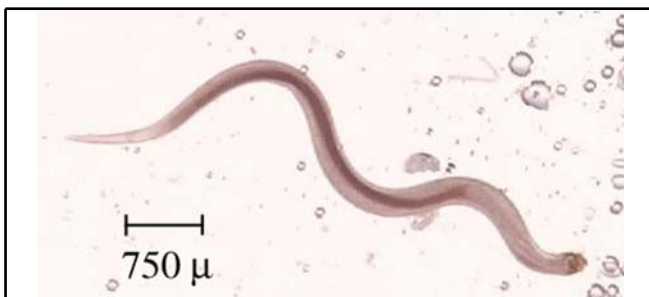


Figure 12. Juvenile *Camallanus* nematode from a fire mouth cichlid. Credits: Tropical Aquaculture Laboratory; University of Florida

Camallanus species have indirect life cycles and are live-bearing nematodes. They are considered "ovoviviparous" ("ovo" is the scientific term for "egg" and "viviparous" means live-bearing), as females incubate the eggs which hatch into larvae within their bodies (Figure 13). These larvae are excreted into the water with the fish's feces and are ingested by a copepod or other crustacean. Within the copepod, the larvae develop further into a third-stage larvae. After the copepod, containing the third-stage larvae, is eaten by the appropriate fish host, the larvae migrate out into the fish, develop into reproductive adults, and the life cycle is complete.

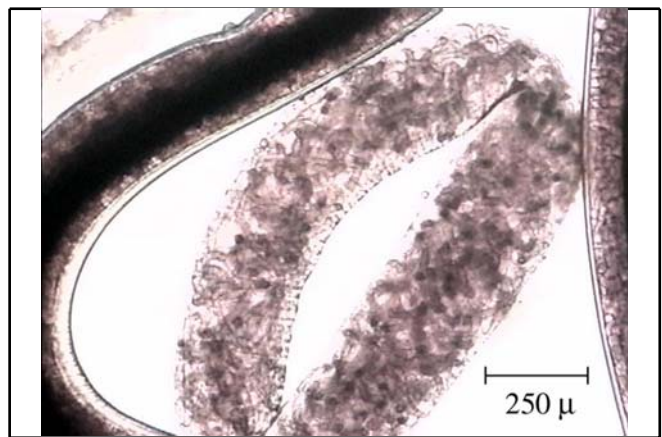


Figure 13. Close up of a *Camallanus* sp. female showing larvae inside. Credits: Tropical Aquaculture Laboratory; University of Florida

Diagnosis

Camallanus species can be identified by their red color; their location further toward the posterior of the intestinal tract than other worm-like parasites (typically very near, and often protruding from, the anus of the fish); the presence of a buccal capsule (mouth structure) that is divided into two lateral valves, giving the mouth a slit like appearance; and, if gravid females are present, the presence of both eggs and larvae within their bodies. Positive identification will require the assistance of a veterinarian, other fish health specialist, or parasitologist.

Treatment

Because *Camallanus* nematodes are located within the intestinal tract, common dewormers should be effective.

Prevention

As a copepod or other crustacean host is required to complete the life cycle, avoiding the use of copepods or related crustaceans as food items will help reduce potential for infection. Evaluation of brood stock for the presence of parasites prior to use will also aid in identifying carriers.

Contracaecum Species

Larval stages of the *Contracaecum* species that infect freshwater fish are usually found as adults in fish-eating birds, such as cormorants and pelicans. Larval stages (Figure 14) are seen in cyprinids (carp

and related species), ictalurids (channel catfish), centrarchids (sunfish and bass), tilapia and other cichlids, and percids (perch). On the other hand, the larval stage of the *Contracaecum* species that infect marine fish, such as whiting, capelin, and cod, are typically found as adults in seals.

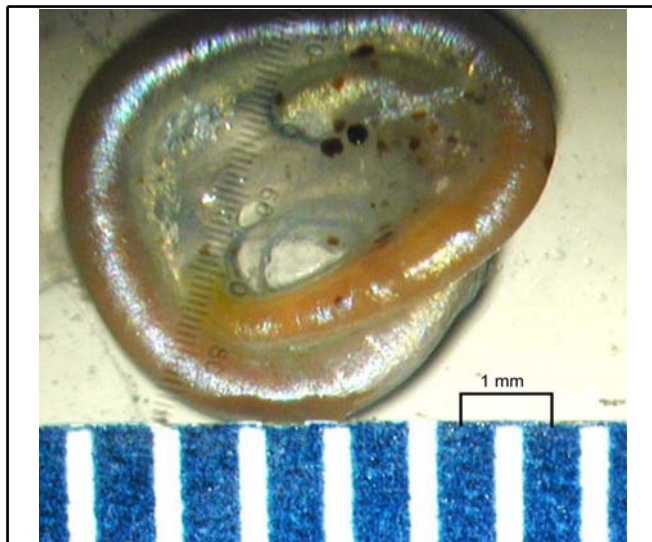


Figure 14. Larval *Contracaecum* sp. from a freshwater fish, showing typical coiled position. Credits: Tropical Aquaculture Laboratory; University of Florida

As implied above, *Contracaecum* species have complex life cycles. The eggs are released by gravid females into the intestinal tracts of their definitive (final) hosts, where they are excreted into the water with the feces. The eggs hatch and the free-living larvae develop into the infective third-stage larvae (L3). These L3 larvae are then ingested by an invertebrate intermediate host, within which they develop even further. This invertebrate host is then ingested by the fish intermediate host, where it remains until the intermediate fish host is eaten by the final host (a fish-eating bird or mammal). Some species of *Contracaecum* (e.g., *C. spiculigerum*) appear to have no specificity for fish hosts, so they are able to use a wide variety of fish species as intermediate hosts.

Contracaecum species have been found in several locations within the body of fish, including the liver, muscles, heart, and swim bladder. They can be relatively common in wild fish, and are not necessarily associated with disease.

Diagnosis

During necropsy of a small group of fish, tentative identification of infection by *Contracaecum* species can be made based upon finding larval nematodes in the locations listed above. However, because other nematodes have larvae which may look similar to larvae of *Contracaecum*, positive identification of *Contracaecum* infection needs to be made by a veterinarian, other fish health specialist, or parasitologist.

Treatment

Larval nematodes are found in the fish intermediate host in locations where they cannot be easily removed by the fish if killed (an example of a good location that would warrant treatment would be in the gut). They are also not necessarily associated with disease. Consequently, chemical treatments, such as dewormers and chemical baths, are not an option and may even incite an immune reaction in the fish, ultimately doing more harm than good.

Prevention

Elimination of final hosts (bird or mammal) and invertebrate intermediate hosts from the aquaculture site will help reduce and, possibly, eliminate infection.

Summary

Nematodes, or roundworms, have been found in numerous species of fish. Because they are similar to other worm-like parasites of fish, proper diagnosis is important for effective treatment. Working with a fish health specialist will insure proper diagnosis and legal treatment or prevention. Producers of food and game fish have more limited options for the treatment of infected fish than will the producers of ornamental fish because the FDA has elected to use regulatory discretion with regard to use of drugs for ornamental (aquarium) fish.

Small numbers of nematodes may be present in fish without causing significant symptoms. In more severely infected fish, evidence of disease can include emaciation (wasting or significant loss of body mass), nodules or masses present in skin or

muscle, stunted growth, abnormal swimming, lethargy, or death.

Depending upon the species of fish and the species of nematode, fish may be final hosts (containing adult nematodes) or intermediate hosts (containing larval nematodes). Some species of nematodes that infect fish can be transmitted directly from one fish in the population to another (direct life cycle). Other species of nematodes require additional hosts to complete their life cycle, commonly an invertebrate host or a fish, bird, or mammal as final host. Consequently, correct identification of the nematode is critical for proper management of the disease.

Nematodes found within the gastrointestinal tracts of ornamental fish can be treated with appropriate de-wormers. Nematodes found in other locations within ornamental fish cannot be removed easily through chemical means. If the fish are showing signs of clinical disease, culling of clinically diseased, infected fish may be necessary. There are currently no FDA-approved de-wormers for use in game or food fish. Control of intermediate or final hosts will help break the life cycles of these parasites. In addition, proper sanitation of ponds or tanks will help reduce the abundance of infective stages.

References

- Dick, T.A. and A. Choudhury. 1995. Phylum Nematoda. *In* Fish diseases and disorders, Chapter 11, Volume 1, Protozoan and metazoan infections, P.T.K. Woo (editor), CAB International, Cambridge, UK, pp. 415-466.
- Carpenter, J.W., T.Y. Mashima, and D.J. Rupiper. 2001. Exotic animal formulary. Second ed. W.B. Saunders Company. 423 pp.
- Coyner, D.F. M.G. Spalding, and D.J. Forrester. 2003. Epizootiology of *Eustrongylides ignotus* in Florida: transmission and development of larvae in intermediate hosts. *Journal of Parasitology* 89 (2): 290-298.
- Hoffman, G.L. 1999. Parasites of North American freshwater fishes. Second edition. Comstock Publishing Associates, Ithaca, NY.
- Measures, L.N. 1987. Epizootiology, pathology, and description of *Eustrongylides tubifex* (Nematoda: Dioctophymatoidea) in fish. *Canadian Journal of Zoology* 66: 2212-2222.
- Measures, L.N. 1988. The development of *Eustrongylides tubifex* (Nematoda: Dioctophymatoidea) in oligochaetes. *Journal of Parasitology* 74 (2): 294-304.
- Noga, E.J. 1996. Fish disease: diagnosis and treatment. Mosby-Year Book, Inc., St. Louis, MO, pp. 166-170.