

WHAT IS BITTING YOU?



Look closely at your pest so you know what it is.

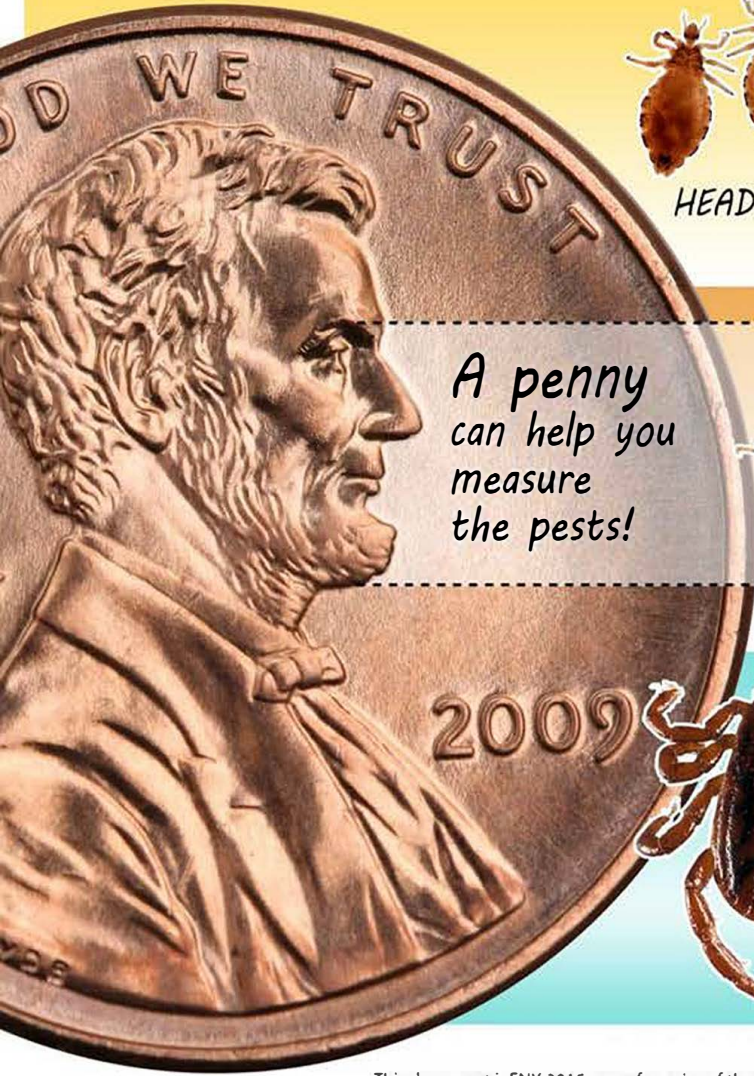
- All of these pests feed on blood
- None of these pests can fly



CAT FLEAS

- Does it jump?
- Do you have red bites on your legs?

It might be FLEAS



A penny can help you measure the pests!



HEAD LICE

- Is it found in your hair?
- Does your head itch?

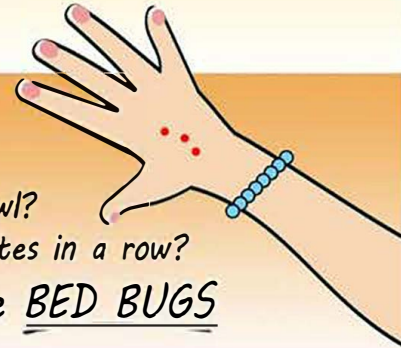
It might be HEAD LICE



BED BUG

- Is it oval?
- Does it crawl?
- Are your bites in a row?

It might be BED BUGS



BROWN DOG TICK

- Does it have eight legs?
- Is it stuck on you?

It might be a TICK



This document is ENY-2015, one of a series of the Department of Entomology and Nematology, UF/IFAS Extension. Original publication date April 2011. Reviewed June 2020. Visit the EDIS website at <https://edis.ifas.ufl.edu>.

E. E. Harlow, commercial horticulture Extension agent; Dr. C. A. McNeill, professor, Union College, Lincoln, Nebraska; Dr. R. W. Baldwin, associate professor; R. M. Pereira, research scientist; Dr. P. G. Koehler, professor emeritus; and J. C. Medley, senior art/publication production specialist (retired)